

全港至大至好玩自「研」世界

Hong Kong's Biggest & Best Nature Playground



啟迪好奇
探索驚喜
Thrill of Discovery

參與保育聯盟
攜手為保育出力
Embark on a Conservation Journey by
Joining Ocean Park Conservation Alliance

讓學生自主探索
Become Self-directed Learners

2025/26
幼兒活動

Kindergarten
Programmes



香港海洋公園學院
Ocean Park Academy · Hong Kong

香港海洋公園學院

Ocean Park Academy Hong Kong

香港海洋公園學院於2004年成立，一直致力在海洋公園多元豐富的環境中提供綜合和持續的教育活動。我們亦期望成為學校全方位學習活動的理想場地，讓不同年齡的學員在海洋公園歡樂的氣氛中認識大自然和保育。

Ocean Park Academy Hong Kong (OPAHK) was founded in 2004 to deliver education programmes in the diversified environment of Ocean Park. We aspire to become the ideal destination for life-wide learning where students of different ages can learn about nature and conservation in an enjoyable atmosphere.



目錄

Contents

	學界專業推薦 Recommendations from the Education Sector	P.3-6
	相關學習概念 Relevant Knowledge & Concept	P.7-8
	海洋公園保育聯盟 Ocean Park Conservation Alliance	P.9-10
 園內 In-park	自然體驗班 Nature Experience	P.11
	自然探索班 Nature Exploration	P.12
	互動講座 Interactive Theatre	P.13
	大型學習日配套 Ocean Park School-wide Activity Package	P.14
	全方位學習之旅（學生團體票） Life-wide Learning Journey (Student Group Tickets)	P.15
 園外 Out-park	到校活動 School Activity	P.16
 網上 Online	網上活動 Online Activity	P.17
	免費網上教材套 Free Online Education Kit	P.18
	活動詳情 Programme Details	P.19-20
	活動申請方法；條款及細則 Application Method; Terms & Conditions	P.21-22

學界專業推薦

Recommendations from the Education Sector

教育局局長

Secretary for Education
Education Bureau

蔡若蓮博士, JP

Dr. CHOI Yuk Lin, JP

教育局

Education Bureau

教育局致力以跨課程方式推廣環保教育，與環境及可持續發展教育相關的概念，已融入中小學課程。教育局鼓勵學校通過課堂內外的全方位學習活動，培養學生愛護大自然、珍惜資源、維護生態環境的意識和責任感，幫助他們從認知到情感，從情感到行動，身體力行實踐綠色生活，珍惜地球資源。海洋公園已成為支援學校推廣可持續發展教育的重要夥伴，感謝園方為推動大自然生態保育和相關教育作出的努力與貢獻。

The Education Bureau is committed to promoting environmental education through a cross-curricular approach. Concepts related to environmental protection and sustainable development have already been integrated into the primary and secondary school curricula. The Bureau encourages schools to nurture students' awareness and sense of responsibility in caring for nature, conserving resources, and protecting the ecological environment through both classroom teaching and a wide range of life-wide learning activities. This helps students progress through cognition, affection and action, thereby putting green living into practice and cherishing the Earth's resources.

Ocean Park is an important partner in supporting schools to advance education on sustainable development, and the Park's ongoing efforts and contributions in promoting ecological conservation and related education is appreciated.

節錄自海洋公園保育嘉年華活動致辭 Excerpt from the speech delivered at the Ocean Park Conservation Carnival

國際英文幼稚園

St. Catherine's International Kindergarten

海洋公園團隊在安排活動日程方面為我們提供了非常全面的協助，並一直與學校保持溝通，更新資訊並回答相關問題。在活動舉行前的一星期，海洋公園代表抽空與我們的教師進行Zoom會議，提供活動前簡介，以確保所有教師了解園內最新資訊並解答他們遇到的疑問。

Prior to our school outing to the Ocean Park Academy, the Ocean Park team were extremely helpful in organising the schedule and remained in constant communication with our school.

The Ocean Park representatives arranged a Zoom meeting with our teachers the week of the visit to provide a pre-visit briefing to answer any questions and ensure all teachers received up-to-date information.



宣道會陳李詠貞紀念幼稚園

Christian Alliance Chen Lee Wing Tsing Memorial Kindergarten

鄭美芳校長

Ms. CHENG Mei Fong, Principal

在海洋公園，我們的學生可以接觸到很多不同的海洋生物，課程中亦有不同刺激學生四感的元素，令幼兒可以不失專注下吸收到關於海洋動物的知識。專業的教育大使亦透過活潑的講解，令到複雜的海洋知識更加容易明白，從而提升到學生對海洋生態的興趣。學生在課程完結後，不但學懂海洋生物的生活習性，更重要的是學會如何保護珍貴的海洋生物，令上帝所創造的世界更美好。

Students could have a chance to see and interact with different ocean creatures inside Ocean Park. The courses here provide experience that stimulates students' four senses, which is essential to draw the attention of children when sharing vast marine knowledge to them. Through the enthusiastic explanations by teachers, difficult marine knowledge could be understood easily and the interest of students towards marine ecology could be increased. After the courses, students could understand the habits of marine animals, and in addition, to learn about how to protect the precious marine animals. Such outcomes could better the world that God has made for us.

ABC Pathways International Kindergarten

林綺雲校長

Ms. LAM Yee Man Joey, Principal

「海洋公園保育聯盟」及「海馬同學會」計劃，為學生提供了一次啟發性及實踐性的學習體驗。透過實地觀察、參與工作坊及挑戰活動，學生不僅掌握了海洋生態與可持續發展的知識，還能將所學應用於課堂討論與研究中。同時，這些經歷提升了他們的生態意識、批判性思維及團隊合作能力。海洋公園結合教育與保育的理念，對學生產生了深遠的影響，啟發他們行動起來保護環境。

"Ocean Park Conservation Alliance" and "Seahorse Rangers" programme provided students with an inspiring and practical learning experience. Through field observations, workshops, and challenge activities, students not only gained knowledge about marine ecosystems and sustainability but also applied what they learned in classroom discussions and research. These experiences enhanced their ecological awareness, critical thinking, and teamwork skills. Ocean Park's integration of education and conservation has had a profound impact on students, inspiring them to take action to protect the environment.



學界專業推薦

Recommendations from the Education Sector



聖士提反女子中學附屬幼稚園

St. Stephen's Girls' College Kindergarten

鄭儷娥校長

Ms. Keren CHENG, Headteacher

為了配合本年度的校本發展目標及「小小大熊貓護理員教育計劃」，本校參加了「海洋公園保育聯盟」之「海馬同學會」計劃，讓幼兒學習不同保育知識，例如減少購買預先包裝食品、低碳生活及優先選擇本地食材。幼兒從活動中認識到要盡責保持生物多樣性、拯救瀕危物種及其棲息地。

衷心感謝香港海洋公園學院團隊用心設計學習活動及提供適切教材，擴闊了幼兒的保育視野，從而建立愛護環境的品格。

In alignment with the school-based learning objectives and the "Little Giant Panda Caretakers Education Programme" for this academic year, our school has participated in the "Ocean Park Conservation Alliance" - "Seahorse Rangers Programme". This allowed children to explore various aspects of conservation, such as reducing the purchase of pre-packaged foods, low carbon life style, and prioritising locally sourced ingredients. Through participating in the activities, children have developed a deeper understanding of maintaining biodiversity and saving endangered species and their habitats.

We sincerely thank the staff from the Ocean Park Academy Hong Kong for designing the meaningful learning experience and providing appropriate teaching materials. Their support has broadened the children's perspectives on conservation and a strong sense of responsibilities towards caring for the environment.

翠林邨浸信會幼稚園/幼兒園

Tsui Lam Estate Baptist Kindergarten/Nursery

陳樞寶女士

MS. CHAN Kwok Bo, Principal

翠林邨浸信會幼稚園/幼兒園參與「海洋公園保育聯盟」，成為「海馬同學會」成員，承諾以自身的力量向學生、家庭及公眾推廣保育資訊，豐富幼兒的保育視野，在校園推動保育並達成三大保育目標！藉著一系列的教育活動，提倡保育及培養環保的習慣。

Tsui Lam Estate Baptist Kindergarten/Nursery joins the "Ocean Park Conservation Alliance" and becomes a member of the "Seahorse Rangers" Programme. We pledge to use our own strength to promote conservation information to students, families and the public, enrich children's conservation perspectives and promote conservation on campus to achieve the three major conservation goals! Through a series of educational activities, we promote conservation and cultivate environmental friendly habits.

歡樂創意幼稚園

Fun Creative Kindergarten

黃國禎主任

Ms. WONG Kwok Ching

成為「海洋公園保育聯盟學校」並參加「海馬同學會」，可以讓歡樂創意幼稚園的幼兒親身感受大自然的美好、探索生態多樣性、認識並了解環保的重要性，還培育出欣賞和尊重大自然的良好品格。透過「低碳呀，唔該！」日和SGREEN活動，我們將環保實踐在日常生活中，寓學習於遊戲，並體驗綠色生活的樂趣。

整個活動讓我們確信通過體驗式遊戲教育，幼稚園小朋友也可以為地球的可持續發展作出貢獻，猶如我校精神：歡樂學習，創告未來！

Becoming "Ocean Park Conservation Alliance" member school and participating in the "Seahorse Rangers", allows children in Fun Creative Kindergarten to experience the beauty of nature, explore ecosystem diversity, understand the importance of environmental protection, and cultivate good quality culture of appreciation and respect towards the nature. Through "Low Carbon, PLS!" Day and SGREEN activities, we practise environmental measures in our daily lives, integrate learning into games, and experience the fun of green living.

The entire activity convinced us that through play-based learning with fun and educational games, kindergarteners can also contribute to the sustainability of our planet, in line with the spirit of our school: Fun to Learn, Create the Future!



德貞幼稚園

Tack Ching Kindergarten

香港海洋公園學院教育課程富趣味性，能夠讓學生透過觀察及親身體驗，與小動物有近距離的接觸，從而提升學生的學習興趣，並給他們留下深刻的印象。

Ocean Park Academy provides very interesting and inspiring education programmes which allows students to have closer contact with various animals through observation and first-hand experience. It will not only arouse students' interest in learning but also giving them a deep impression on nature.



聖母幼稚園

Our Lady's Kindergarten

本園很榮幸能成為本年度海洋公園「海馬同學會」保育聯盟學校，在參與三大旗艦活動的過程中，不但豐富了幼兒的環保和保育生態的知識，而且家長和老師也與幼兒一起積極參與回收物品和支持減碳活動。高班幼兒更有機會與老師到海洋公園學習保育大自然和認識了不同的海洋生物。這愉快和寶貴的學習經驗令幼兒更懂得愛護地球和珍惜資源，獲益良多。

Our kindergarten is honoured to be a member of the "Ocean Park Conservation Alliance" and "Seahorse Rangers" this year. During participating in the three flagship activities, students could enrich their knowledge in environmental protection and conservation. Parents and teachers also supported and actively participated in recycling and carbon reduction activities with students. Moreover, K3 students even had the opportunity to visit Ocean Park with teachers to learn about nature conservation and get to know different marine animals. This pleasant and valuable learning experience has facilitated students to obtain a better understanding of how to protect the earth and cherish resources, which allows us to benefit a lot.

竹園區神召會太和康樂幼兒學校

Pentecostal Church of Hong Kong Tai Wo Nursery School

今年很高興我校能夠加入「海馬同學會」，成為「海洋公園保育聯盟」學校。計劃切合幼兒生活經驗、學習主題及興趣，多元化的體驗式學習活動，使幼兒不但獲得愉快的學習體驗，亦能擴闊視野，增加對各種動物和棲息地的認識，從中反思個人行為對生態環境的影響，建立批判性思維和解決問題能力，培養保育意識，有利塑造更美好的未來。

This year, we are excited that our school can join the "Seahorse Rangers" and become the member school of "Ocean Park Conservation Alliance". The programme is tailored to the student's life experience, learning-related themes and interests. The diversified experiential learning activities not only allow students to have a pleasant learning experience, but also widen their horizons and increase their understanding of various animals and habitats. Through reflecting on the impacts of personal behaviours on the ecological environment, students can build critical thinking and problem-solving skills, cultivate conservation awareness, and help shape a better future.











相關學習概念

Relevant Knowledge & Concept

本院幼兒活動緊貼學校課程發展，配合不同學科的內容和學生的學習需要。本院把全方位學習策略融入教育活動，讓學生於真實情境中，聯繫並應用不同領域的知識和技能，更有效地掌握學習目標。與此同時，本院不斷推動社會、甚至地球的可持續發展。多元化的活動主題配合聯合國一系列的可持續發展目標，冀望學生從中了解其重要性，在促進經濟繁榮的同時，共同為保護地球而努力。

OPAHK provides various kindergarten programmes that are based on the content of school curriculum and students' learning needs. We incorporate life-wide learning strategies into our programmes that facilitate effective learning by enabling students to connect as well as implement knowledge and skills from different learning areas into real life situations. The diverse themes of our programmes also match the sustainable development goals proposed by the United Nations, allowing students to understand the importance of sustainable development while promoting economic prosperity.

活動 Programme	相關學習概念 Relevant Knowledge & Concept					可持續發展目標 Sustainable Development Goals		
	運用各感官 進行觀察 To Observe by Using the Senses	探索四周 的事物和 大自然現象 To Explore Surroundings and Nature	欣賞、尊重 和愛護大自然 To Appreciate, Respect and Care for Nature	實踐環保生活 To Live an Environmentally-friendly Life	大自然與生活 Nature and Living			
						氣候對策 Climate Action 	海洋生態 Life below Water 	陸地生物 Life on Land 
園內活動 In-park Activity								
海洋派對 Ocean Party	✓	✓	✓	✓	✓		✓	
大熊貓跡中尋 The PANTastic Footprints		✓	✓	✓	✓			✓
下一站極地 Next Stop is Polar	✓	✓	✓	✓	✓	✓	✓	
海陸探險隊 Surf and Turf Expedition		✓	✓	✓	✓		✓	✓
雨林大歷險 Sensory Discovery in Rainforest	✓		✓	✓	✓	✓		✓
互動講座 Interactive Theatre		✓	✓	✓	✓			✓

活動 Programme	相關學習概念 Relevant Knowledge & Concept					可持續發展目標 Sustainable Development Goals		
	運用各感官 進行觀察	探索四周 的事物和 大自然現象	欣賞、尊重 和愛護大自然	實踐環保生活	大自然與生活			
	To Observe by Using the Senses 	To Explore Surroundings and Nature 	To Appreciate, Respect and Care for Nature 	To Live an Environmentally-friendly Life 	Nature and Living 	氣候對策 Climate Action 	海洋生態 Life below Water 	陸地生物 Life on Land 
到校活動 School Activity								
到校互動講座 Outreach Interactive Seminar		✓	✓	✓	✓	✓	✓	✓
到校自然 探索嘉年華 Outreach Carnival - Nature Exploration	✓	✓	✓	✓	✓	✓	✓	✓
網上活動 Online Activity								
威威說故事： 深海歷險記 Whiskers' Storytelling: Deep Sea Adventure		✓	✓	✓	✓	✓	✓	
威威說故事： 冰極運動會 Whiskers' Storytelling: Polar Sports Challenge		✓	✓	✓	✓	✓	✓	



海洋公園以保育及教育為發展基石，一直致力將人與大自然連結起來。為促進社區協作及公眾參與，海洋公園於2023年推出全新保育倡議項目 - 「逆瀕行動」。「逆瀕行動」啟發自世界自然保護聯盟(IUCN)的全球逆轉瀕危趨勢行動，確保生態系統多樣性。自2023年起，超過500間學校成為「逆瀕行動」下的「海洋公園保育聯盟學校」(下稱:「聯盟學校」)，以三大目標推廣校內保育。今年海馬同學會(幼稚園)將繼續由環境及自然保育基金資助，透過「環境及自然保育基金 x 海馬同學會」計劃，提供一系列幼稚園專享資源及活動。

Ocean Park has always been committed to conservation and education as the cornerstone of its development, and has been dedicated to connecting people with nature. To promote community collaboration and public participation, Ocean Park launched a new conservation advocacy campaign named "Mission R" in 2023. "Mission R" is inspired by International Union for Conservation of Nature (IUCN) global initiative to ensure biodiversity. From 2023, over 500 schools have become members of "Ocean Park Conservation Alliance" under "Mission R", advocating conservation actions on campus based on the three visions. This year, "Seahorse Rangers (Kindergarten)" is continuously funded by Environment and Conservation Fund. By joining the "Environment and Conservation Fund x Ocean Park Seahorse Rangers" project, Ocean Park will be providing a series of Kindergarten-exclusive teaching resources and activities.

海馬同學會 Seahorse Rangers

為了更配合幼稚園需要，於2025/26學年，「海馬同學會」名額更提升至全級同學均可參加，活動將為期一年，主題圍繞：減廢、碳中和及香港生物多樣性。

In order to meet the needs of kindergartens, the "Seahorse Rangers" are now open to students from the same grade in the 2025/26 academic year. The programme will last for one year, and the themes will focus on waste reduction, carbon neutrality, and Hong Kong local biodiversity.

除三項旗艦活動外，「海馬同學會」成員更專享園內活動及以下物資，協助學校於校內，以至在社區內推廣保育信息：

In addition to the three flagship activities, the event also includes exclusive in-park activities and resources, to promote conservation messages within schools and in the community:



半日園內活動
Half-day Ocean Park Activity



任務小冊子
Orienteering Booklet



保育制服
Conservation Uniform



海洋公園學習通行證
Ocean Park Learning Pass



教學資源 - 課室探索區：保育角
Learning and Teaching Kit - Exploration Area:
Conservation Corner in Classroom



完成三大旗艦活動並完成指定任務，將獲頒「海洋公園保育聯盟傑出學校」獎座。

"Member School" will be awarded "Ocean Park Conservation Alliance Outstanding School" trophy after completing all required missions of the 3 flagship activities.

旗艦活動 Flagship Activities

「逆瀕行動」三大目標設立三大旗艦活動 Three flagship activities based on three visions of "Mission R":



回收在校園

SGREEN

認識香港回收資訊，培養師生減廢回收習慣
Get to know about recycling information in Hong Kong, develop recycling habits in students and teachers



減廢挑戰

Waste Reduction Challenge



碳中和，是什麼

Carbon Neutrality! Let's try!

從生活上的小習慣著手，減少碳排放，一起實現碳中和
By changing our habits in daily life, to reduce carbon emissions and achieve carbon neutrality together



低碳生活

Low Carbon Life Style



城市自然挑戰賽

City Nature Challenge

認識香港動植物及生物多樣性
Know more about flora, fauna species and local biodiversity



拯救物種及棲息地

Saving Species and Habitats

海洋公園保育嘉年華 Ocean Park Conservation Carnival

為了與公眾及其他學界持份者分享「聯盟學校」在這個學年對保育活動的想法和經驗，「海洋公園保育聯盟」將於2026年7月上旬舉辦「海洋公園保育嘉年華」。

"Ocean Park Conservation Alliance" will host the "Ocean Park Conservation Carnival" in early July, 2026 to showcase and share the ideas and experiences on conservation activities gained by "Member School" throughout the 2025/2026 academic year.



保育遊戲攤位

Conservation Game Booths

成為「聯盟學校」的方法 Way to register as "Member School"

掃描二維碼，登記參與「環境及自然保育基金資助 x 海洋公園海馬同學會」計劃，成為「海洋公園保育聯盟學校」。

如學校於2024/25年度已參與「環境及自然保育基金資助 x 海洋公園海馬同學會」計劃，學校將會自動續會成為「海洋公園保育聯盟學校」。

Scan the QR code to register for "Environment and Conservation Fund x Ocean Park Seahorse Rangers" project, and become a member of "Ocean Park Conservation Alliance".

Schools will be automatically renewed as the member of "Ocean Park Conservation Alliance" if schools have participated in the "Environment and Conservation Fund x Ocean Park Seahorse Rangers" in 2024/25 academic year.



園內活動 - 自然體驗班

In-park Programmes - Nature Experience



學生能近距離與動物會面，並透過簡明的教材和互動教學模式，讓學生善用各種感官探索大自然的奇妙之處。

Through simple and interactive teaching methods, preschoolers will have the opportunity to get close to and be inspired by the nature. Students can also develop their sensory-perceptual ability by observing creatures of the land and sea, and learning collaboratively.



海洋派對 Ocean Party



活動特色 Programme Highlights

- 到訪「海洋奇觀」並近距離接觸海岸生物，讓同學了解大自然的奧妙
- 參與互動布偶劇，發掘海洋生物保護自己的方法和重要性
- Dwell in the wonder of Grand Aquarium and meet seashore animals to discover the beauty of nature
- Explore how various marine animals protect themselves in the wild through an interactive puppet show

活動形式 Programme Format

- 近距離觀察及接觸海洋生物、互動布偶劇場
- Close observation and contact with marine animals; Interactive puppet show



大熊貓跡中尋 The PANTastic Footprints



活動特色 Programme Highlights

- 參與以四川動物日常生活為主題的互動布偶劇，並決定故事發展
- 透過觀察大熊貓的居住環境，認識四川動物各種身體特徵與棲息地之關係
- Take part in an interactive puppet show to learn about Sichuan animals and determine the story's ending
- Discover significant body features of Sichuan animals and understand how they adapt to environment

活動形式 Programme Format

- 觀察大熊貓、互動布偶劇場
- Giant panda observation; Interactive puppet show



下一站極地 Next Stop is Polar



活動特色 Programme Highlights

- 走進「北極之旅」，親身感受極地環境，並探究北極動物的生存秘密
- 進行科學小實驗，探究不同物質的保溫效能
- Investigate the survival skills of Arctic animals with first-hand experience in North Pole Encounter
- Conduct a simple experiment to compare the insulating ability of different materials

活動形式 Programme Format

- 觀察北極動物、科學小實驗
- Arctic animal observation; Science experiment

時間 Time	45 分鐘 Minutes
費用 Fee	學生 (每位) Student (Per person) HK\$110
名額 (學生) Capacity (Students)	20 - 40

園內活動 - 自然探索班

In-park Programmes - Nature Exploration



透過多樣化的導覽主題，本課程為學生提供自主學習與探索的機會。學生將走訪園內不同動物展館，觀察來自多種生境的動物，從中訓練自主探索、觀察與思考的能力。

Through a variety of themed guided tours, this programme offers students the opportunity for self-directed learning and exploration. Students will visit different animal exhibits in the park, observe species from various habitats, and develop their skills in independent inquiry, observation, and critical thinking.



海陸探險隊

Surf and Turf Expedition



活動特色 Programme Highlights

- 遊覽「海洋奇觀」及「亞洲動物天地」，探索海洋及陸上動物的特徵
- 透過細心觀察，了解不同動物的需要與其棲息地之關係
- Explore the features of marine and terrestrial animals through visiting Grand Aquarium and Amazing Asian Animals
- Observe the needs of different animals and understand their relationship to the habitats they live in

活動形式 Programme Format

- 教育景點導賞、互動遊戲
- Narration in attractions; Interactive games



雨林大歷險

Sensory Discovery in Rainforest



活動特色 Programme Highlights

- 運用五感尋訪「熱帶雨林天地」，探究雨林動物的身體特徵，並尋找雨林動物中的「五感皇者」
- 參與課室內的互動故事環節，認識感官對雨林動物的重要性
- Explore Rainforest to unmask the "Kings of Senses" of the rainforest by observing the characteristics of rainforest animals
- Learn the importance of senses to rainforest animals with an interactive storytelling session in classroom

活動形式 Programme Format

- 教育景點導賞、互動故事
- Narration in attractions; Interactive storytelling

時間 Time	45 分鐘 Minutes
費用 Fee	學生（每位） Student (Per person) HK\$90
名額（學生） Capacity (Students)	20 - 40

園內活動 - 互動講座

In-park Programmes - Interactive Theatre



本院特設大型互動學習講座，可同時容納多個班別或班級，靈活配合學校需要。互動講座以故事形式進行。學生更有機會近距離觀察動物，一同探索新奇有趣的動物小知識。

To cater a large group of students across classes and levels, we offer the Interactive Theatre in storytelling format. Students can discover fascinating facts about animals through animal educational demonstrations and interactive games guided by educators.



巨人森林之旅

Journey to the Jungle of Giants



活動特色 Programme Highlights

- 透過故事及互動遊戲，深入地認識熱帶雨林動物特徵及其居住環境
- 近距離觀察動物，了解護理員的日常護理工作
- Discover the features of rainforest animals and their habitats through stories and interactive games
- Understand the duties of animal caretakers through animal educational demonstrations

活動形式 Programme Format

- 動物教育示範、說故事、互動遊戲
- Animal educational demonstrations; Storytelling; Interactive games



時間 Time	45 分鐘 Minutes
費用 Fee	學生（每位） Student (Per person) HK\$90
名額（學生） Capacity (Students)	100 - 450

園內活動 - 大型學習日配套

In-park Programmes - Ocean Park School-wide Activity Package



海洋公園一直致力締造難忘、有趣好玩、富娛樂性及具教育意義的遊樂體驗，亦是全校學習日或學校旅行的首選地點。本園由專業團隊提供一站式服務，全程跟進及協助籌備，致力配合學校需要，務求活動安排更臻完備。活動內容可參考園內幼稚園活動。

Ocean Park is a popular destination for large-scale school activities with our professional support and fun-filled programmes. We are committed to provide memorable experiences that are fun, entertaining, and educational while promoting life-long learning and conservation advocacy through schools outing. This package applies to all in-park programmes for Kindergarten students.



學生人數達三百人的本地學校大型活動即可獲免費一站式服務
Free one-stop service will be provided to local schools outings of 300 or more students

內容將因應活動規模有所調整
Contents are subject to change depending on the event scale

園內活動 - 全方位學習之旅 (學生團體票)

In-park Programmes - Life-wide Learning Journey (Student Group Tickets)



「全方位學習之旅」配合香港學校課程，活動包括海洋公園入場門票、網上「全方位探索秘笈」，以及讓學生自主探索的遊蹤任務工作紙。

The "Life-wide Learning Journey" is in line with the Hong Kong School Curriculum. The package includes admission to the Park, online "Life-wide Learning Discovery at Ocean Park" and an Orienteering Mission Worksheet.



時間 Time	全日自由探索 Free Exploration
費用 Fee	學生 (每位) Student (Per person) HK\$110

掃描二維碼，前往活動網頁瀏覽
申請表格及相關條款及細則

Scan the QR code to visit the event
website for the application form and
related terms and conditions





到校互動講座 Outreach Interactive Seminar

講座以故事形式進行，並設有兩大主題：深海歷險記及冰極運動會，以供學校選擇。

OPAHK offers the Outreach Interactive Seminar for schools in storytelling format with two thematic options: Deep Sea Adventure and Polar Sports Challenge.



活動特色 Programme Highlights

- 深海歷險記：透過威威與好友尋找珊瑚迷宮的故事，了解海洋垃圾的影響，並思考減少海洋垃圾的方法
- 冰極運動會：透過威威與好友參與冰極運動會的故事，認識氣候變化對極地造成的影響，並探索節約用電的方法
- Deep Sea Adventure: Learn about the impacts of marine debris and explore ways to reduce marine debris through the story of Whiskers and Friends' journey to Coral Maze
- Polar Sports Challenge: Understand the impacts of climate change and explore solutions to save energy through the story of Whiskers and Friends joining the Polar Sports Challenge

活動形式 Programme Format

- 說故事、互動遊戲
- Storytelling; Interactive games



到校自然探索嘉年華 Outreach Carnival - Nature Exploration

「到校自然探索嘉年華」鼓勵學生透過不同的攤位遊戲，發掘大自然所帶來的驚喜，了解有趣的動植物知識及保育資訊。

Students are encouraged to explore the wonders of nature and discover interesting facts of flora and fauna through a variety of interactive game booths.



活動特色 Programme Highlights

- 以五感探索大自然，並深入了解不同動物的野外生存技能
- 認識不同動物的身體特徵，學會欣賞大自然的美妙
- Explore the nature with five senses and discover the survival skills of different animals; Understand how their special body features help them adapt to the environment
- Discover the characteristics of animals and appreciate the beauty of nature

活動形式 Programme Format

- 互動攤位遊戲、自然素材接觸
- Interactive game booths; Natural materials play

活動 Programme	到校互動講座 Outreach Interactive Seminar	到校自然探索嘉年華 Outreach Carnival - Nature Exploration
時間 Time	45 分鐘 Minutes	90 分鐘 Minutes
費用 Fee	HK\$4,000	HK\$15,000
名額 (學生) Capacity (Students)	20-300	100-300



威威說故事：深海歷險記 Whiskers' Storytelling: Deep Sea Adventure



活動特色 Programme Highlights

- 透過威威與好友尋找珊瑚迷宮的故事，辨認海洋動物及其身體特徵
- 了解海洋垃圾的影響，並思考減少海洋垃圾的方法
- Identify special features of marine animals through the story of Whiskers and Friends' journey to Coral Maze
- Learn about the deleterious effect of marine debris and explore ways to reduce them

活動形式 Programme Format

- 說故事、互動遊戲
- Storytelling; Interactive games



威威說故事：冰極運動會 Whiskers' Storytelling: Polar Sports Challenge



活動特色 Programme Highlights

- 透過威威與好友參與冰極運動會的故事，發掘各種極地動物的獨特之處
- 了解氣候變化對極地造成的影響，並探索節約用電的方法
- Discover the distinct characteristics of polar animals through the story of Whiskers and Friends joining the Polar Sports Challenge
- Understand the consequences of climate change and investigate solutions to save energy

活動形式 Programme Format

- 說故事、互動遊戲
- Storytelling; Interactive games

時間 Time	45 分鐘 Minutes
費用 Fee	HK\$3,000
名額 (學生) Capacity (Students)	20-150

免費網上教材套

Free Online Education Kit



掃描此二維碼
了解詳情
Please scan this
QR code for
more details



如何啟發學生的好奇心？運用五種感官及科學思維，一起發掘大自然的奧秘！本園融合自然探索、體驗式學習、故事書和動畫等多種元素，助你為學生締造新奇有趣的發現之旅。

How to inspire curiosity in students? Explore the wonders of nature using five senses and scientific thinking! Ocean Park offers fascinating experiences that combine nature discovery, experiential learning, storytelling and animation which create a learning journey rich in intriguing discoveries and inspiring moments for students.

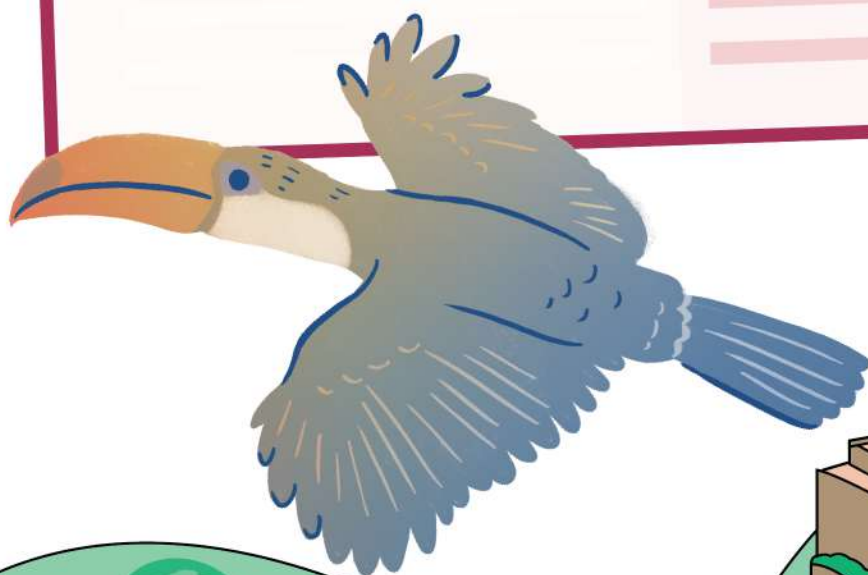
網上教材套 Online Education Kit

小紅熊和自然守護隊 Redd and the Nature Guardians

老師與學生可隨時隨地使用此教材，
為教學增添彈性！

Flexibility is the key! Teachers and students have
access to this kit anytime, anywhere.

- 電子故事書 E-book
- 精彩動畫 Animation
- 五感發現紀錄 Five Senses Discovery Record
- 教學指引 Teaching Guides
- 「小紅熊 Redd's Nature Play Party」YouTube 教育頻道
"Redd's Nature Play Party" YouTube Channel



活動詳情

Programme Details



現凡參加幼稚園活動的學生，即可以優惠價HK\$20換購「遊蹤任務」工作紙；而繳付額外留園費用的學生則可免費獲贈一份。

Students participating in kindergarten programmes could get a copy of the Orienteering Mission Worksheet for HK\$20! Students who pay the stay-behind surcharge can get it for FREE.

自然體驗班 | Nature Experience

活動 Programme		海洋派對 Ocean Party	大熊貓跡中尋 The PANTastic Footprints	下一站極地 Next Stop is Polar
名額 (學生) Capacity (Students)		20 - 40		
時間 Time	09:30 - 10:15	✓	✓	
	10:15 - 11:00	✓	✓	✓
	11:00 - 11:45	✓	✓	✓
	11:45 - 12:30	✓	✓	✓
	12:30 - 13:15	✓	✓	✓
	13:15 - 14:00	✓	✓	✓
	14:00 - 14:45	✓	✓	✓
	14:45 - 15:30	✓	✓	✓
地點 Location		海濱樂園 The Waterfront		高峰樂園 The Summit
費用 Fee [^]		學生 (每位) Student (Per person) HK\$110		
		老師 (每位) Teacher (Per person) HK\$110		
額外留園費用 Stay-behind Surcharge		學生 (每位) Student (Per person) HK\$40		
		老師 (每位) Teacher (Per person) HK\$125		

[^]活動費用包括教育活動及一小時自由參觀。

Programme fee includes education programme and 1-hour self-visit at the Park.

自然探索班 | Nature Exploration

活動 Programme		海陸探險隊 Surf and Turf Expedition	雨林大歷險 Sensory Discovery in Rainforest
名額 (學生) Capacity (Students)		20 - 40	
時間 Time	09:30 - 10:15	✓	
	10:15 - 11:00	✓	✓
	11:00 - 11:45	✓	✓
	11:45 - 12:30	✓	✓
	12:30 - 13:15	✓	✓
	13:15 - 14:00	✓	✓
	14:00 - 14:45	✓	✓
	14:45 - 15:30	✓	✓
地點 Location		海濱樂園 The Waterfront	高峰樂園 The Summit
費用 Fee [^]		學生 (每位) Student (Per person) HK\$90	
		老師 (每位) Teacher (Per person) HK\$110	
額外留園費用 Stay-behind Surcharge		學生 (每位) Student (Per person) HK\$40	
		老師 (每位) Teacher (Per person) HK\$125	

[^]活動費用包括教育活動及一小時自由參觀。

Programme fee includes education programme and 1-hour self-visit at the Park.

凡購滿五張學生票，可獲得隨團老師門票乙張，其持有人可隨學生參與活動。其餘老師須另外繳付費用進園，而費用不包括參與活動。學生不可使用老師入園門票，反之亦然。所有參加者須於完成活動後離開海洋公園。如欲繼續使用本園設施，必須事先申請，並繳付額外留園費用。活動費用有效期至2026年8月31日。

Ocean Park issues 1 accompanying ticket for every 5 student tickets purchased per group, so they can accompany students to the programme. An extra fee applies for any additional teacher to enter the Park, and the fee does not include the participation of the programme. Students cannot use the teacher admission tickets, and vice versa. All participants are expected to leave Ocean Park after the education programme. Participants who would like to remain at the Park and enjoy its facilities after the programme must apply in advance and pay a stay-behind surcharge. The programme fees are valid until 31 August 2026.

互動講座 | Interactive Theatre

活動 Programme	巨人森林之旅 Journey to the Jungle of Giants
名額 (學生) Capacity (Students)	100 - 450
時間 Time	10:15 - 11:00
地點 Location	海濱樂園 The Waterfront
費用 Fee [^]	學生 (每位) Student (Per person) HK\$90
	老師 (每位) Teacher (Per person) HK\$110
額外留園費用 Stay-behind Surcharge	學生 (每位) Student (Per person) HK\$40
	老師 (每位) Teacher (Per person) HK\$125

[^]活動費用包括教育活動及一小時自由參觀。

Programme fee includes the education programme and 1-hour self-visit at the Park.

凡購滿五張學生票，可獲得隨團老師門票乙張，其持有人可隨學生參與活動。其餘老師須另外繳付費用進園，而費用不包括參與活動。學生不可使用老師入園門票，反之亦然。所有參加者須於完成活動後離開海洋公園。如欲繼續使用本園設施，必須事先申請，並繳付額外留園費用。活動費用有效期至2026年8月31日。

Ocean Park issues 1 accompanying ticket for every 5 student tickets purchased per group, so they can accompany students to the programme. An extra fee applies for any additional teacher to enter the Park, and the fee does not include the participation of the programme. Students cannot use the teacher admission tickets, and vice versa. All participants are expected to leave Ocean Park after the education programme. Participants who would like to remain at the Park and enjoy its facilities after the programme must apply in advance and pay a stay-behind surcharge. The programme fees are valid until 31 August 2026.

全方位學習之旅 (學生團體票) | Life-wide Learning Journey (Student Group Tickets)

門票種類 Type	幼稚園學生票 Kindergarten Student Ticket	額外成人票 Additional Adult Ticket (購買一張學生票可購買額外成人票最多兩張) (2 additional adult tickets can be purchased per 1 student ticket)
費用 (每張) Fee (Per Ticket)	HK\$110	HK\$235

到校活動 | School Activity

活動 Programme	到校互動講座 Outreach Interactive Seminar	到校自然探索嘉年華 Outreach Carnival - Nature Exploration
名額 (學生) Capacity (Students)	20 - 300	100 - 300
時間 Time	每節 45 分鐘 Each session lasts for 45 minutes	每節 90 分鐘 Each session lasts for 90 minutes
費用 Fee	每節 Each session HK\$4,000	每節 Each session HK\$15,000

網上活動 | Online Activity

活動 Programme	威威說故事：深海歷險記 Whiskers' Storytelling: Deep Sea Adventure	威威說故事：冰極運動會 Whiskers' Storytelling: Polar Sports Challenge
名額 (學生) Capacity (Students)	20 - 150	
時間 Time	每節 45 分鐘 Each session lasts for 45 minutes	
費用 Fee	每節 Each session HK\$3,000	

活動費用有效期至2026年8月31日。

The programme fees are valid until 31 August 2026.

活動申請方法（本地學校教育活動）

香港海洋公園學院之本地學校教育活動於2025年9月1日至2026年8月31日期間舉辦。教育活動逢星期一至星期六舉辦，公眾假期及本園指定不適用日子除外。活動名額有限，先到先得。每月十五日為下個月份教育活動報名的截止日期。

1. 請於本院網頁下載申請表，然後以電郵遞交至opahk-news@oceanpark.com.hk。
2. 各活動的學生名額均設上下限，詳情請參閱各單張。若報名學生人數少於最低名額要求，貴校須付最低名額款項。
3. 每位學生須參加最少一項活動。
4. 本院提供之課程為教育活動，並非親子活動。
5. 本院將於收到申請表後十個工作天內聯絡申請人，通知申請結果並發出「付款通知書」。若貴校在期限後仍未收到通知，請致電本院職員（+852）3923 2323（請於接通後選擇語言，續按[1]，再按[4]字）。
6. 請根據本院所發出之「付款通知書」上的指示完成付款程序。本院接受信用卡、現金轉賬及支票繳交費用。
7. 校方於收到「付款通知書」後，須於付款期限前繳交費用。
8. 本院會於確認收到校方付款後，以電郵發出「申請確定信」給校方，收據則於活動當日交予學校代表。
9. 入場票需於參觀當日憑確定信及隨團老師的身份證明文件或教職員證明文件到本園票務部領取。

條款及細則

1. 本活動只適用於香港特別行政區教育局學校級別中的「幼稚園」、「小學」或「中學」（各級別中的特殊學校亦包括在內）；並不適用於獲教育局歸類為「其他」的學校。
2. 本院活動之參加者必須為申請表上列明之學校的註冊學生。
3. 所有活動均以粵語、英語或普通話進行，校方須於申請活動時於申請表上列明。
4. 若校方未能於限期前繳交費用或完成活動申請手續，本院保留取消活動申請的權利。
5. 入場門票只可於指定日期使用，一經確定不得更改。所有已繳交之費用恕不退還。
6. 參加者須準時到達集合地點，逾時不候，遲到者不獲補時安排。
7. 額外老師門票費用不包括參與活動，持票人需於公園開放後方可入園，並需按公眾順序使用公園設施。
8. 入場人士可攜帶嬰兒食物，或只於用作個人食用的合理份量之外來食物或飲品進入公園。如有任何查詢，請致電（+852）3923 2323（請於接通後選擇語言，續按[1]，再按[0]字）與海洋公園遊客服務部職員聯絡。
9. 請勿攜帶任何超過 56cm x 36cm x 23cm 之行李或大型物品進入本公園內之景點或劇場。閣下可自費將行李寄存於行李寄存服務處（設於海濱樂園夢幻水都內的嬰兒車及輪椅租用處旁）。
10. 除非經本園事先批准，否則所有於本園拍攝之照片或影像均不得作商業用途。遊客進入公園後，即代表本園有權採用遊客的相片或圖像作教育或宣傳用途。
11. 除非經本園事先批准，否則申請本院活動之學校均不得利用「香港海洋公園」及「香港海洋公園學院」之名義作公開宣傳用途。
12. 學生參加指定活動或須自行乘坐海洋列車前往活動集合地點或景點。
13. 如活動舉行當日遇到以下情況而令活動取消，本院將為受影響之學校重新安排活動時間，活動將於原定參觀日期起計之一個月內舉行：
 - 活動開始前2小時天文台發出紅色或黑色暴雨警告信號，或
 - 活動開始前2小時天文台發出一號戒備信號或以上之熱帶氣旋警告信號，或
 - 教育局宣佈停課。
14. 活動內容及日期可能因應動物及天氣狀況而作出更改或取消。動物教育示範及機動遊戲體驗可能因惡劣天氣狀況而取消。活動內容如有任何更改，恕不另行通知。
15. 如天文台發出黃色暴雨警告信號，「互動講座」的動物教育示範將會作出更改或取消。
16. 海洋公園部份設施或會因工程進行而關閉，不作另行通知，敬請留意。
17. 任何人士須遵守海洋公園入口處及 / 或其他位置所示之海洋公園附例、安全規則及公園守則。海洋公園對公園內任何人士之任何財物的任何種類之損失或損害概不承擔任何責任。
18. 海洋公園保留所有更改活動申請的條款及批核申請之最終決定權。

Application Method (Local School Education Programme)

Ocean Park Academy Hong Kong (OPAHK) programmes are available from Mondays to Saturdays, from 1 September 2025 to 31 August 2026, except public holidays and blockout dates. All applications are considered on a first-come, first-served basis. The monthly deadline is the 15th of the previous month.

1. Application forms may be downloaded from our website and submitted via email to opahk-news@oceanpark.com.hk.
2. Each programme requires a minimum number of student participants and has a maximum capacity. For details, please refer to our booklets. If the number of registered students is fewer than the minimum requirement, your school will be requested to pay for the minimum.
3. Please select at least one programme for each student.
4. The activities offered by Ocean Park Academy Hong Kong (OPAHK) are part of our educational programme. They are not parent-child activities.
5. Applicants will be notified of the application result and issued a Payment Notice within ten working days upon our receipt of the duly completed application form. If you fail to receive any notification within this timeframe, please contact our staff at (+852) 3923 2323 (select language and press [1], and then [4]).
6. Please follow the instructions on the Payment Notice to complete the payment. Applicants can settle payment by credit card, bank transfer or cheque.
7. The payment must be settled by the payment due date upon receipt of the Payment Notice.
8. A Confirmation Letter will be sent to the school by email after the payment is duly received and confirmed by OPAHK. The receipt will be issued on the visiting day for collection.
9. Tickets are available for collection upon presentation of the Confirmation Letter and valid identification documents of accompanying teacher at the Park's Ticketing Office on the date of visits.

Terms & Conditions

1. The programmes are only available for schools classified under the school level of Education Bureau of the HKSAR Government as "kindergartens", "primary schools" or "secondary schools" (including special schools among these school levels), and not available for schools classified as "others".
2. Participants of the programmes must be the registered students at the school indicated on the application form.
3. All programmes are conducted in Cantonese, English or Putonghua and the requests should be indicated in advance on the application form.
4. If the payment cannot be settled by the payment due date or if the application is not duly completed, OPAHK reserves the right to cancel the application.
5. Tickets can only be used on the date of validation. No refund or rescheduling will be made after confirmation.
6. Participants must be punctual in arriving at the designated gathering locations. Latecomers will not be entertained, and the programme cannot be extended beyond the scheduled time.
7. Additional teacher tickets' holder does not include the participation of the programme. Ticket holders may enter the Park only after it opens and must use the Park facilities in accordance with public order.
8. Participants may bring in baby food and a reasonable quantity of food and beverages for personal consumption. For further information, please contact our staff at (+852) 3923 2323 (Select the language and press [1], and then [0]).
9. Baggage and bulky item over the size of 56cm x 36cm x 23cm are not allowed in any attractions or theatre inside the Park. You may store them at our Baggage Rental Counter (next to the Stroller and Wheelchair Rental Counter at Aqua City, Waterfront).
10. All photos and videos taken at Ocean Park are not allowed for commercial use without prior approval from Ocean Park Corporation. Admission to the Park signifies your permission and agreement for Ocean Park to take and use your photographs and videos for educational and promotional purposes.
11. Applicants are not allowed to advertise in the name of "Ocean Park Corporation" or "Ocean Park Academy Hong Kong" without prior approval from Ocean Park Corporation.
12. Students participating in specific programmes might need to take the Ocean Express to the gathering locations or attractions on their own.
13. In the occurrence of the following events, OPAHK will reschedule the visits for schools affected to a new date within a month of the affected day:
 - The Hong Kong Observatory issues Red or Black Rainstorm Warning Signal 2 hours before the visit, or;
 - The Hong Kong Observatory issues Tropical Cyclone Warning Signal Number 1 or higher 2 hours before the visit, or;
 - The Education Bureau announces class suspension of all schools.
14. Programme contents and dates are subject to change or cancellation depending on animal and weather conditions. Animal educational demonstrations and rides experience may be cancelled due to adverse weather conditions. Programme contents may be subject to change without prior notice.
15. When the Hong Kong Observatory issues an Amber Rainstorm Warning Signals, animal educational demonstrations in Interactive Theatre are subject to change or cancellation.
16. Ocean Park may suspend the operation and/or close any facilities for renovation work without prior notice.
17. All guests must comply with Ocean Park Bylaw, safety rules, and the Park's Rules and Regulations which are accessible at the entrance and other locations throughout Ocean Park. Ocean Park shall be under no liability or responsibility for any loss of any kind or any damage to any property of any person in the Park.
18. Ocean Park reserves the right to make the final decision on application procedure and approval.



**超過 More than
1,600,000 名**

學生由九十年代初至今參與過海洋公園的教育活動

Students have taken part in Ocean Park's education programmes since the early 1990s



**超過 More than
140,000 名**

學生於同一學年內參與海洋公園教育活動(過往一年內最高參與人數)

Students of all ages participated in education activities at the Park within the same academic year (Highest record within one academic year)



**高達 More than
95%**

受訪遊人對公園教育活動感到十分滿意(過往三年內最高數據)

Respondents were highly satisfied with the Park's education programmes (Highest record in 3 consecutive years)

電話 Tel.: **(+852) 3923 2323**

請於接通後選擇語言，續按[1]，再按[4]字聯絡海洋公園探索及教育部。
Once you have called the Hotline and selected the language, please press [1], and then [4] to contact the Discovery & Education Department.

電郵 Email: opahk-news@oceanpark.com.hk

網址 Website: <http://www.oceanpark.com.hk/education>



此刊物由大豆油墨印製

This prospectus is printed with soy ink

全港至大至好玩自「研」世界 Hong Kong's Biggest & Best Nature Playground



啟迪好奇
探索驚喜
Thrill of Discovery



參與保育聯盟
攜手為保育出力

Embark on a Conservation Journey by
Joining Ocean Park Conservation Alliance

讓學生自主探索
Become Self-directed Learners

2025/26
小學活動

Primary School
Programmes



香港海洋公園學院
Ocean Park Academy · Hong Kong

香港海洋公園學院

Ocean Park Academy Hong Kong

香港海洋公園學院於2004年成立，一直致力在海洋公園多元豐富的環境中提供綜合和持續的教育活動。我們亦期望成為學校全方位學習活動的理想場地，讓不同年齡的學員於海洋公園歡樂的氣氛中認識大自然和保育。

Ocean Park Academy Hong Kong (OPAHK) was founded in 2004 to deliver education programmes in the diversified environment of Ocean Park. We aspire to become the ideal destination for life-wide learning where students of different ages can learn about nature and conservation in an enjoyable atmosphere.



目錄

Contents

	學界專業推薦 Recommendations from the Education Sector	P.3-6
	相關學習概念 Relevant Knowledge & Concept	P.7-8
	海洋公園保育聯盟 Ocean Park Conservation Alliance	P.9-10
 園內 In-park	自然體驗班 Nature Experience	P.11-13
	海洋公園生涯規劃活動 Life Planning Education in Ocean Park	P.14
	自然探索班 Nature Exploration	P.15
	互動講座 Interactive Theatre	P.16
	大型學習日配套 Ocean Park School-wide Activity Package	P.17
	全方位學習之旅（學生團體票） Life-wide Learning Journey (Student Group Tickets)	P.18
	姊妹學校教育活動 Sister School Programme	P.19
 園外 Out-park	到校活動 School Activity	P.20
	Nature+ 活動 - 生態奇趣遊、共建生態園、鳥巢工程師 Nature+ Programme - Nature Explorer, Eco Garden at School, Artificial Bird Nest at School	P.21
	Nature+活動 - 境外生態之旅 Nature+ Programme - Outbound Eco Study Tours	P.22
 網上 Online	免費網上教材套 Free Online Education Kit	P.22
	網上活動 Online Activity	P.23
	香港海洋公園保育基金 - 教育活動 Ocean Park Conservation Foundation, Hong Kong - Education Programmes	P.24
	活動詳情 Programme Details	P.25-28
	活動申請方法；條款及細則 Application Method; Terms & Conditions	P.29-30

學界專業推薦

Recommendations from the Education Sector

教育局局長

Secretary for Education
Education Bureau

蔡若蓮博士, JP

Dr. CHOI Yuk Lin, JP

教育局

Education Bureau

教育局致力以跨課程方式推廣環保教育，與環境及可持續發展教育相關的概念，已融入中小學課程。教育局鼓勵學校通過課堂內外的全方位學習活動，培養學生愛護大自然、珍惜資源、維護生態環境的意識和責任感，幫助他們從認知到情感，從情感到行動，身體力行實踐綠色生活，珍惜地球資源。海洋公園已成為支援學校推廣可持續發展教育的重要夥伴，感謝園方為推動大自然生態保育和相關教育作出的努力與貢獻。

The Education Bureau is committed to promoting environmental education through a cross-curricular approach. Concepts related to environmental protection and sustainable development have already been integrated into the primary and secondary school curricula. The Bureau encourages schools to nurture students' awareness and sense of responsibility in caring for nature, conserving resources, and protecting the ecological environment through both classroom teaching and a wide range of life-wide learning activities. This helps students progress through cognition, affection and action, thereby putting green living into practice and cherishing the Earth's resources.

Ocean Park is an important partner in supporting schools to advance education on sustainable development, and the Park's ongoing efforts and contributions in promoting ecological conservation and related education is appreciated.

節錄自海洋公園保育嘉年華活動致辭 Excerpt from the speech delivered at the Ocean Park Conservation Carnival

香港教育大學賽馬會小學

The Education University of Hong Kong Jockey Club Primary School

羅金源副校長

Mr LAW Kam Yuen, Vice Principal

海洋公園是一個結合「科學」、「探索」和「樂趣」的教育場所，讓學生寓學習於娛樂。在海洋公園中，老師可以找到最新的教育發展方向，每個方向都令人興奮不已。

「海洋公園保育聯盟」是一個引領學校以可持續發展教育為目標的項目。透過這個計劃，學生可透過一連串旗艦活動學習保護自然環境，並且為未來的可持續發展做出貢獻。

而「海馬同學會」則以海洋公園為基地，讓學生自主探索不同動物及生態。這個活動不僅能夠讓學生近距離觀察各種生物，還能夠激發他們對生態保育的興趣和熱情。

海洋公園學院的課程涵蓋了各個學習領域，學生們可以在其中享受學習的樂趣。不論您對於生物的探索有多麼熱衷，我誠意推薦各位老師參加海洋公園的活動。在這裡，您將能夠體驗到前所未有的探索樂趣，並且獲得豐富的知識和經驗。

Ocean Park is an educational playground that combines "science", "exploration" and "fun" all in one. You can find the latest educational developments within Ocean Park, each offering an enticing experience.

"Ocean Park Conservation Alliance" leads schools towards the goal of sustainable development education. Through this programme, students can learn how to protect our natural environment and contribute to a sustainable future.

Meanwhile, "Seahorse Rangers" allows students to independently explore animal ecology with Ocean Park as their base. This activity not only provides students with the opportunity to observe flora and fauna up close but also ignites their interest and passion for ecological conservation.

The educational programmes at Ocean Park Academy encompass a wide range of subjects, making learning an enjoyable experience for all. Whether you have a deep passion for exploring animals or not, I sincerely recommend Ocean Park's activities. Here, you will be able to experience unparalleled excitement in exploration and gain valuable knowledge and experiences.



秀茂坪天主教小學

Sau Mau Ping Catholic Primary School

鄒子傑主任

Mr. CHAU Tsz Chun

香港海洋公園的課程設計既富有創意又充滿教育意義，完美結合了教育與娛樂，為學生打開了一扇認識自然世界的新窗口。在一系列的體驗式學習活動中，學生能親身接觸大自然和動物，這有助激發他們的好奇心，誘發他們主動學習有關生態保育的重要資訊。我相信這些寶貴的經歷將伴隨著孩子們成長，激勵他們成為未來的環境保護者。

The programme curriculum of Ocean Park Academy is designed to be both creative and educational, perfectly combining education and entertainment, and opens a new window for students to explore the world of nature. Through a series of experiential learning activities, students can closely observe and study the park's nature and animals, which helps to stimulate their curiosity and motivate them to learn important information about ecological conservation. I believe these valuable experiences will grow with students and inspire them to become future environmentalists.

香港南區官立小學

Hong Kong Southern District Government Primary School

黃文詩主任

Ms. WONG Nancy

從「海馬同學會」到不同主題課程，香港海洋公園學院提供多元化的學習活動，連繫日常生活中STEAM學習領域知識，激發學生的學習興趣和拓闊他們的視野；更提供實際體驗的機會，讓學生貫通書本上所學的不同議題，讓他們意識到保護海洋環境和不同瀕危物種的重要性。

Ocean Park Academy Hong Kong not only offers a diverse range of learning activities that connect students' everyday life with knowledge in STEAM learning, but also provides real-life immersive and practical experiences. These experiences not only inspire students' interest in learning and broaden their horizons, but also allow them to bridge up what they learn from textbooks and real-world issues. Through participation, students become aware of the significance of protecting the marine environment and various endangered species.

學界專業推薦

Recommendations from the Education Sector

青松侯寶垣小學

Ching Chung Hau Po Woon Primary School

李東樂老師

Mr. LEE Tung Lok

海洋公園學院為學界提供獨特而富有教育意義的活動，是其他團體無法比擬的。學院能善用海洋公園獨有的自然生態系統，令學生走出課本，親身探索和觀察大自然環境，並學習各種保育和環境保護的知識。不但學生感到雀躍，連老師也大開眼界。

Ocean Park Academy Hong Kong offers unique and educational programmes for the school community that no other organisations can match. With Ocean Park's distinctive ecological resources, Ocean Park Academy's student programmes allow students to step outside the classroom, experience and observe the natural environment, and develop their knowledge on conservation and environmental protection. Not only were the students excited, teachers were also amazed by the eye-opening experience offered by the Academy.

元朗公立中學校友會小學

Yuen Long Public Middle School Alumni Association Primary School

黎冠延老師

Mr. LAI Kwun Yin

透過「海洋公園保育聯盟」及「海馬同學會」的活動，學生能增加保育的經歷，促進保育的知識，讓學生能在多樣化的體驗中學習保育的重要性。我們的學生可用學習通行證，多次到公園進行自主學習和觀察動植物，讓他們了解各動物的有趣之處，提升學習動機和興趣。透過互動工作坊能啟發學生的探究精神，培養出良好的保育態度，也可推動學校的環境教育發展，符合國家環境安全。

Through programmes organised by the "Ocean Park Conservation Alliance" and "Seahorse Rangers", students have more opportunities to gain hands-on experience and expand their knowledge on conservation. This allows them to discover the importance of conservation through a variety of engaging learning activities. With the Ocean Park learning pass, students can independently study and observe the park's flora and fauna at their own pace, developing an appreciation for biodiversity. Interactive workshops effectively inspire students' natural curiosity while nurturing positive conservation values. The above initiatives also help schools make progress in environmental education, and fit the ecological security promoting by national security to promote environmental protection and sustainability among young generations. Overall, these experiences served to boost students' motivation to learn and take action for the protection of our natural heritage.

仁濟醫院羅陳楚思小學

Yan Chai Hospital Law Chan Chor Si Primary School

海洋公園不僅是一個深受學生歡迎的遊樂場，更是一個富有教育意義的學習平台。學院提供多元化的課程，例如我們學生曾參與的「海洋生物擱淺之謎」與「珊瑚拯救隊」保育課程等，從中提升對自然生態與環境保育的關注與理解，激發他們的好奇心與探究精神。

除了在園內上課外，海洋公園亦透過網上直播與學校互動，即使學生身處校內或其他地點，亦能獲得專家指導。團隊亦會親身到校舉辦講座（如水上安全互動講座），更特別的是，部分課程更包括實地體驗，例如安排學生親身登船進行實地觀察與學習，將知識應用於真實情境，達致真正的體驗式學習。

作為「海洋公園保育聯盟」成員及「海馬同學會」參與學校，我們積極運用園方提供的教材與資源，推動學生在校內實踐環境保育，並鼓勵他們將愛護大自然的理念傳遞給身邊每一位同學，從校園出發，推廣保育文化。

Ocean Park is not only a favourite destination among students, but also a meaningful platform for environmental education. The Academy offers a wide range of educational programmes, including those our students have participated in—such as “Stranded Marine Animal Investigation” and “Coral Rescue Team”—which help deepen their awareness and understanding of ecology and conservation, while also sparking their curiosity and spirit of inquiry.

Beyond on-site lessons, Ocean Park also connects with schools through live-streamed sessions, allowing students to receive expert guidance even when learning remotely. The education team also visits schools to conduct interactive talks (such as on water safety). Uniquely, some programmes include experiential components, such as taking students onboard for field-based observation and learning—applying knowledge in real-world contexts to achieve truly immersive learning.

As a member of the “Ocean Park Conservation Alliance” and the “Seahorse Rangers”, our school actively integrates the Park’s teaching materials and resources into our learning environment. We encourage students to practise conservation on campus and inspire their peers to develop a love for nature, fostering a culture of environmental awareness that starts from school and radiates outward.



天水圍循道衛理小學

Tin Shui Wai Methodist Primary School

每一次參與公園的教育活動都能帶給師生新的啟發。不論是近距離觀察動物，了解牠們的生活習性，或是參與導師帶領的互動體驗，都有助於學生與大自然建立更深的連繫。

Ocean Park education programmes provide opportunities for students to develop closer bonding with nature through animal observation and interactive experiences guided by Ocean Park educators. After joining the programme, both the teachers and students are inspired to contribute in conservation.

相關學習概念 Relevant Knowledge & Concept

本院活動緊貼小學課程的學科主題及相關學習概念，並配合教育局課程框架設計內容。課程改革後，小學常識科分拆為「人文科」及「科學科」，本院活動亦按新架構作出調整，讓教師選擇適合學生的學習內容。本院多年來推動社會乃至地球的可持續發展，一系列多元化的教育活動主題與聯合國的可持續發展目標一致，尤其致力恒久保護地球及其自然資源，冀望同學們從中了解可持續發展的重要，在促進經濟繁榮的同時，亦能為保護地球共同努力。

The primary school programmes offered by OPAHK closely follow the subjects and learning areas of primary schools, as well as the curriculum frameworks designed by the Education Bureau. Our programmes are therefore aligned with "Primary Science" and "Primary Humanities" derived from the former General Studies curriculum, such that teachers may select the appropriate programmes to meet their students' learning needs. OPAHK is committed to promoting the sustainable development of our society and the Earth. Our diverse programmes are in line with the Sustainable Development Goals of the United Nations, which advocate the ongoing protection of the Earth and natural resources, among others. It is our hope that through these carefully-curated educational programmes, students may understand the importance of sustainable development and of protecting our planet while pursuing economic prosperity.

	相關學習概念 Relevant Knowledge & Concept								可持續發展目標 Sustainable Development Goals				
	人文科 Humanities				科學科 Science								
	健康與生活 Health and Living 	環境與生活 Environment and Living 	國家與我 Our Country and Me 	世界與我 The World and Me 	生命與環境 Life and Environment 	物質、能量和變化 Matter, Energy and Changes 	地球與太空 Earth and Space 	科學、科技、工程與社會 Science, Technology, Engineering and Society 	可持續城市和社區 Sustainable Cities and Communities 	負責任的消費及生產 Responsible Consumption and Production 	氣候對策 Climate Action 	海洋生態 Life below Water 	陸地生物 Life on Land 
園內活動 In-Park Activity													
大熊貓營養師 Giant Pandas' Nutritionist	✓	✓			✓			✓					✓
國寶守護隊 Panda Protectors		✓	✓	✓	✓		✓		✓	✓	✓		✓
珊瑚拯救隊 Coral Rescue Team		✓		✓	✓		✓	✓	✓	✓	✓	✓	
邂逅海洋生物 Meet Marine Animals		✓		✓	✓		✓		✓			✓	
搜證遊學豚 Exploration with Dolphins		✓			✓				✓			✓	
海岸大歷險 Coastal Adventure		✓			✓				✓	✓	✓	✓	
海洋公園生涯規劃活動 Life Planning Education in Ocean Park*		✓		✓	✓	✓		✓	✓	✓		✓	✓
海陸生物放大鏡 The Beauty in Biodiversity		✓		✓	✓		✓		✓	✓	✓	✓	✓
動物生存秘笈 Tactics in the Wild		✓			✓				✓		✓	✓	✓
互動講座 Interactive Theatre		✓		✓	✓		✓		✓	✓	✓	✓	✓

7 *活動只適用於小四至小六。The programme is only applicable to Primary 4-6.

	相關學習概念 Relevant Knowledge & Concept								可持續發展目標 Sustainable Development Goals				
	人文科 Humanities				科學科 Science								
	健康 與生活 Health and Living 	環境 與生活 Environment and Living 	國家與我 Our Country and Me 	世界與我 The World and Me 	生命 與環境 Life and Environment 	物質、 能量和 變化 Matter, Energy and Changes 	地球 與太空 Earth and Space 	科學、 科技、 工程與社會 Science, Technology, Engineering and Society 	可持續 城市 和社區 Sustainable Cities and Communities 	負責任的 消費及 生產 Responsible Consumption and Production 	氣候對策 Climate Action 	海洋生態 Life below Water 	陸地生物 Life on Land 
園外活動 Out-Park Activity													
到校互動講座 Outreach Interactive Seminar		✓		✓	✓	✓	✓	✓	✓	✓	✓		✓
到校自然 探索嘉年華 Outreach Carnival - Nature Exploration		✓		✓	✓				✓	✓	✓	✓	✓
生態奇趣遊 Nature Explorer		✓		✓	✓				✓				✓
共建生態園 Eco Garden at School*		✓		✓	✓				✓		✓		✓
鳥巢工程師 Artificial Bird Nest at School		✓		✓	✓				✓		✓		✓
境外生態之旅 Outbound Eco Study Tours		✓	✓	✓	✓								✓
網上活動 Online Activity													
海豚搜證 三步曲 Dolphin Tracking Trilogy		✓			✓							✓	
簡單機械 研究所 Arcade Games Designers						✓		✓					
海洋公園 工作實錄 - 動物護理員的 日常工作 Workplace Observations in Ocean Park - Animal Husbandry		✓			✓							✓	✓
本地生物 多樣性大搜查 Local Biodiversity Exploration		✓		✓	✓		✓		✓				✓
新加坡動物園 海外交流 - 雨林保育隊 Singapore Zoo Overseas Exchange - Rainforest Guardian		✓		✓	✓		✓		✓	✓			✓

*活動只適用於小四至小六。 The programme is only applicable to Primary 4-6.

全免
Free

海洋公園保育聯盟 Ocean Park Conservation Alliance



海洋公園以保育及教育為發展基石，一直致力將人與大自然連結起來。為促進社區協作及公眾參與，海洋公園於2023年推出全新保育倡議項目 - 「逆瀕行動」。「逆瀕行動」啟發自世界自然保護聯盟(IUCN)的全球逆轉瀕危趨勢行動，確保生態系統多樣性。自2023年起，超過500間學校成為「逆瀕行動」下的「海洋公園保育聯盟學校」(下稱：「聯盟學校」)，以三大目標推廣校內保育。

Ocean Park has always been committed to conservation and education as the cornerstone of its development, and has been dedicated to connecting people with nature. To promote community collaboration and public participation, Ocean Park launched a new conservation advocacy campaign named "Mission R" in 2023. "Mission R" is inspired by International Union for Conservation of Nature (IUCN) global initiative to ensure biodiversity. From 2023, over 500 schools have become members of "Ocean Park Conservation Alliance" ("Member School") under "Mission R", advocating conservation actions on campus based on the three visions.

海馬同學會 Seahorse Rangers

「海洋公園保育聯盟」設立「海馬同學會」，每間「聯盟學校」都可邀請最多30名同學及3位負責老師成為「海馬同學會」成員並獲得以下免費物資，以帶領全校師生進行保育活動。

"Ocean Park Conservation Alliance" established "Seahorse Rangers". Each "Member School" can have up to 30 students and 3 responsible teachers as "Seahorse Rangers", to lead all students to conduct conservation activities in school.



任務小冊子
Collection Booklet



海洋公園學習通行證
Ocean Park Learning Pass



保育制服 (T恤)
Conservation Uniform (T-shirt)



教學資源 - 保育活動建議
Toolkit - Conservation
Activities Suggestions

「海洋公園保育聯盟」將於2026年1月上旬舉行誓師大會，各成員誓師成為「海馬同學會」的一員，並承諾以自身的力量向同學、家庭及公眾推廣保育資訊，以開展保育路上的旅程。

"Ocean Park Conservation Alliance" will organise Inauguration Ceremony in early January 2026. Students will pledge to become "Seahorse Rangers", committing to promote conservation messages to classmates, families and the public with their own effort, and embark on the journey of conservation.





完成三大旗艦活動並完成指定任務，將獲頒「海洋公園保育聯盟傑出學校」獎座。

"Member schools" will be awarded "Ocean Park Conservation Alliance Outstanding School" trophy after completing all required missions of the 3 flagship activities.

旗艦活動 Flagship Activities

以「逆瀕行動」三大目標設立三大旗艦活動 Three flagship activities based on three visions of "Mission R":



回收在校園 SGREEN

培養師生減廢回收習慣
Develop recycling habits in students and teachers



走塑挑戰 Plastic Challenge



「低碳呀，唔該！」日 "Low Carbon PLS" Day

鼓勵校園種植及採納低碳飲食的概念，減少食物包裝、進食本地農作物以及時令食品
Encourage farming at school and adopt a low carbon diet by consuming package free, local or seasonal food



低碳飲食 Eat Local



城市自然挑戰賽 City Nature Challenge

認識香港動植物及生物多樣性
Know more about flora, fauna species and local biodiversity



拯救物種及棲息地 Saving Species and Habitats

海洋公園保育嘉年華 Ocean Park Conservation Carnival

為了與公眾及其他學界持份者分享「聯盟學校」在這個學年對保育活動的想法和經驗，「海洋公園保育聯盟」將於在2026年7月上旬舉辦「海洋公園保育嘉年華」。

"Ocean Park Conservation Alliance" will host the "Ocean Park Conservation Carnival" in early July 2026 to showcase and share the ideas and experiences on conservation activities gained by "Member School" throughout the academic year.



保育遊戲攤位 Conservation Game Booth

支持機構 Supporting Organisations

「海洋公園保育聯盟」有幸得到以下校長會及教育機構的支持。

"Ocean Park Conservation Alliance" is supported by the following organisations.



香港電腦教育學會
The Hong Kong Association
for Computer Education



香港資優教育學苑
The Hong Kong Academy for Gifted Education



香港資優教育教師協會
Hong Kong Gifted Education
Teachers' Association



新界校長會
New World Education Society



香港副校長會



香港才能教育基金
HKCEF



香港課外活動主任協會
Hong Kong Extra-curricular Activities Master Association



iFuture
香港電子學習教育協會



聯合資訊科技學會



香港教育工作者聯會
Hong Kong Federation of Education Workers



九龍地域校長聯會
Kowloon Region School Heads Association

按英文字母順序排列 (由A至Z) The list is arranged in ascending order (A-Z)

成為「聯盟學校」的方法 Way to register as "Member School"

2024-2025「聯盟學校」會自動更新成為新一學年的「海洋公園保育聯盟學校」。

The Membership of existing "Member School" (2024-2025) will be renewed automatically.

掃描二維碼，登記成為
「海洋公園保育聯盟學校」
Scan this QR code to join and
become a member of "Ocean
Park Conservation Alliance"



園內活動 - 自然體驗班

In-park Programmes - Nature Experience



活動積極培養學生探究周遭環境及解決問題的能力，同時引導學生關心自然保育的議題，讓學生了解動物、環境及人類之間的關係，並學習關心和愛惜動植物。活動以協作學習為主，學生與教育大使共同探索大自然，內容更配合人文及科學課程的內容，提供與學校相輔相成的教材。

The programmes aim to stimulate students' interest in exploring the environment, as well as discovering the interdependence of nature and humans. Collaborative learning is applied to encourage students to investigate the nature in which the content integrates themes and topics from the Primary Humanities & Science curriculum, serving as supplementary learning materials to facilitate students' understanding in the relationship between the environment and organisms.



全新
NEW

國寶守護隊 Panda Protectors



人文科
Humanities



活動特色 Programme Highlights

- 觀察及探索大熊貓的習性和棲息地，了解其分佈與國家地理特徵之關係
- 透過互動棋盤遊戲，認識大熊貓保育措施及面臨威脅，培養環保意識
- Observe and explore the behaviours and habitats of giant pandas, investigating the relationship between their distribution and China's geographical features
- Learn about threats faced by giant pandas and ongoing conservation efforts through interactive games, nurturing ecological awareness

活動形式 Programme Format

- 互動棋盤遊戲、觀察大熊貓
- Interactive board game; Giant panda observation



全新
NEW

大熊貓營養師 Panda Nutritionist



科學科
Science



活動特色 Programme Highlights

- 通過互動遊戲，深入認識大熊貓的消化系統及食物營養素的重要性
- 了解大熊貓的飲食習慣與棲息地的相互關係，提升保育環境的意識
- Study through games the digestive system of giant pandas and the importance of food nutrients
- Explore the relationship between giant pandas' diet and their habitats to cultivate a deeper concern for environmental conservation

活動形式 Programme Format

- 參觀展館、食物營養素遊戲
- Exhibition tour; Interactive game about food nutrients

本院謹此鳴謝秀茂坪天主教小學、大角嘴天主教小學及東涌天主教學校（小學部）與海洋公園教育團隊攜手合作，共同發展以上活動內容。
Our sincere thanks to Sau Mau Ping Catholic Primary School, Tai Kok Tsui Catholic Primary School, and Tung Chung Catholic School (Primary Section) for co-developing the above programmes in collaboration with the Discovery & Education Department of Ocean Park.

時間 Time	45 分鐘 Minutes
費用 Fee	學生（每位） Student (Per person) HK\$110
名額（學生） Capacity (Students)	20 - 40



邂逅海洋生物 Meet Marine Animals



活動特色 Programme Highlights

- 參觀「海洋奇觀」並與海岸生物近距離接觸，欣賞牠們特別的身體構造
- 透過層層疊遊戲解構海洋生物食物鏈密不可分的關係
- Visit Grand Aquarium and observe seashore animals in close proximity and appreciate their extraordinary unique body features
- Unravel the interconnection between marine animals in the food chain through giant jenga game

活動形式 Programme Format

- 海洋食物鏈模擬遊戲、觀察及接觸海洋生物
- Giant jenga game on marine food chain; Marine animal observation and encounter



珊瑚拯救隊 Coral Rescue Team



活動特色 Programme Highlights

- 了解香港珊瑚的特徵，認識珊瑚生態系統以及海洋公園珊瑚保育的工作
- 透過科學實驗引導同學思考珊瑚生態面臨的威脅，並發掘保育珊瑚的方法
- Learn about the structure of corals in Hong Kong; Understand the coral ecosystem and coral conservation actions conducted by Ocean Park
- Conduct science experiment to discover the threats of corals and discuss ways on coral conservation

活動形式 Programme Format

- 觀察珊瑚、科學實驗
- Coral observation; Science experiments

時間 Time	45 分鐘 Minutes
費用 Fee	學生 (每位) Student (Per person) HK\$110
名額 (學生) Capacity (Students)	20 - 40



搜證遊學豚 Exploration with Dolphins



活動特色 Programme Highlights

- 參與集體遊戲並學習分辨海豚、人類及其他海洋動物的異同
- 從護理員的教育示範了解樽鼻海豚的感官，鼓勵同學探究並思考動物的特別感官在社會的應用
- Participate in group activities to study the similarities and differences between dolphins, humans and other marine animals
- Learn about dolphins' extraordinary senses through an animal educational demonstration and be inspired to investigate other animals' special senses as well as their societal applications

活動形式 Programme Format

- 海豚教育示範、海豚特徵探究遊戲
- Dolphin educational demonstration; Dolphins' characteristics investigation



海岸大歷險 Coastal Adventure



活動特色 Programme Highlights

- 觀察動物教育示範，從中認識護理員的工作，以及與海豹和睦相處的秘訣
- 參與互動遊戲，了解與大自然有關的用品或設計，並發掘可持續發展的實踐方法
- Find out the duties of animal caretakers and the secrets of their close bonding with seals through observation
- Explore daily products or designs that are inspired by nature through an interactive game, and discover ways to live sustainably

活動形式 Programme Format

- 海豹教育示範、互動遊戲
- Seal educational demonstration; Interactive activities

時間 Time	45 分鐘 Minutes
費用 Fee	學生（每位）Student (Per person) HK\$110
名額（學生）Capacity (Students)	20 - 40

園內活動 - 海洋公園生涯規劃活動

In-park Programmes - Life Planning Education in Ocean Park



為配合學校進行生涯規劃課程，本院推出不同主題的工作實錄，讓學生可深入到訪幕後地帶，認識海洋公園內多元化的工作機會。此活動只適用於小四至小六學生。

In line with the schools' Life Planning Education, OPAHK provides students with the rare opportunity to visit our behind-the-scene areas and explore the diverse career opportunities in the Park. The programme is only applicable to Primary 4 – 6 students.

活動特色 Programme Highlights

- 近距離觀察幕後工作場地，提升對各專業的認識和興趣
- 與專業團隊交流，了解不同崗位所面對的難題，培養多角度思考及解難能力
- Discover career interests through behind-the-scene visits
- Develop critical thinking and problem solving skills by interacting with professional teams; Understand the challenges they encountered

活動形式 Programme Format

- 專業團隊訪談
- 幕後工作場地參觀及考察
- Interviews with professional teams
- Behind-the-scene workplace visit and observation

動物救援 Animal Rescue*

參觀「香港海洋生物救護及教育中心」，了解獸醫及「海洋生物擱淺行動組」在動物救援工作上的角色。

By visiting Hong Kong Marine Life Stranding and Education Centre, students can understand the roles of Ocean Park veterinarians and other professionals in animal rescuing.



動物護理 Animal Husbandry

深入不同教育景點的幕後地帶，親身體驗動物護理員的日常工作。

By visiting the behind-the-scene areas of different attractions, students can experience the daily operations of animal caretakers.



水族護理
Aquarist



海洋哺乳動物訓練及護理
Marine Mammal
Training and Husbandry



陸生動物訓練及護理
Terrestrial Animal
Training and Husbandry

工程設計 Engineering Design

由機械及系統運作人員的帶領下，認識公園不同機械的設計、維修工作，以及運作過程。

With the guidance of technicians and system operators, students can learn more about the design, maintenance and operation of the system mechanics at the park.



維生系統及維修
Life Support
System and Maintenance



纜車設計及運作
Cable Car
Design and Operation



機動遊戲運作及維修
Ride Operation
and Maintenance

時間 Time	45 分鐘 Minutes
費用 Fee	學生（每位）Student (Per person) HK\$110
名額（學生）Capacity (Students)	15 - 20

*「動物救援」部分環節或以英語輔以粵語或普通話進行。

Parts of the Animal Rescue programme may be conducted in English and supplemented with Cantonese or Putonghua.

園內活動 - 自然探索班

In-park Programmes - Nature Exploration



透過多樣化的導覽主題，本課程為學生提供自主學習與探索的機會。學生將走訪園內不同動物展館，觀察來自多種生境的動物，從中訓練自主探索、觀察與思考的能力。

Through a variety of themed guided tours, this programme offers students the opportunity for self-directed learning and exploration. Students will visit different animal exhibits in the Park, observe species from various habitats, and develop their skills in independent inquiry, observation, and critical thinking.



海陸生物放大鏡

The Beauty in Biodiversity



活動特色 Programme Highlights

- 遊覽「海洋奇觀」及「亞洲動物天地」，親身探索海洋及高山的生物多樣性
- 透過細心觀察，認識生物互相依存的关系並了解生物多樣性的重要性
- Discover the biodiversity of ocean and alpine areas by visiting Grand Aquarium and Amazing Asian Animals
- Observe and uncover the beauty of biodiversity; Explore the symbiotic relationships between different species in oceanic and terrestrial environment

活動形式 Programme Format

- 教育景點導賞、動物觀察
- Narration in attractions; Animal observation



動物生存秘笈

Tactics in the Wild



活動特色 Programme Highlights

- 遊覽「北極之旅」及「熱帶雨林天地」，了解動物在兩種截然不同的氣候下的生存秘訣
- 探索氣候變化對動物的影響，反思個人行為如何保護大自然
- Understand the tactics of animals under two contrasting climates in North Pole Encounter and Rainforest; Explore how animals adapt to different environments
- Explore the impact of climate change on animals and reflect on the ways to live sustainably

活動形式 Programme Format

- 教育景點導賞、動物觀察
- Narration in attractions; Animal observation

時間 Time	45 分鐘 Minutes
費用 Fee	學生（每位） Student (Per person) HK\$90
名額（學生） Capacity (Students)	20-40

園內活動 - 互動講座

In-park Programmes - Interactive Theatre



本院特設大型互動學習講座，可同時容納多個班別或班級，以配合學校需要。學生可在教育大使帶領下，一同探索新奇有趣的動物小知識，更有機會近距離觀察動物，與護理員交流護理心得，從豐富的學習體驗中培養保育意識。

To cater a large group of students across classes and levels, we offer the Interactive Theatre with animal educational demonstrations and interactive games. Guided by animal caretakers and educators, students can discover fascinating facts about animals and arouse awareness on conservation issues.



全新
NEW

大熊貓成長之路 Growth of Giant Panda



活動特色 Programme Highlights

- 透過互動棋盤遊戲，深入認識新生大熊貓，以及牠們正面對的潛在威脅
- 了解護理員的日常護理工作
- Explore the new-born giant pandas and the potential threats that they face through an interactive board game
- Learn about the daily caregiving tasks of animal caretakers

活動形式 Programme Format

- 互動棋盤遊戲、觀看大熊貓成長片段
- Interactive board game; Giant panda growth videos



威威旅行團 Whiskers Tour



活動特色 Programme Highlights

- 透過互動遊戲，深入認識熱帶雨林動物的身體特徵，以及實踐環保生活的重要性
- 近距離觀察動物，了解護理員的日常護理工作
- Discover the unique body features of rainforest animals and the importance of sustainable living through interactive games
- Observe animal educational demonstrations and find out the duties of animal caretakers

活動形式 Programme Format

- 動物教育示範、互動遊戲
- Animal educational demonstrations; Interactive games



向極地出發 Journey to the Polar



活動特色 Programme Highlights

- 近距離觀察動物，深入認識極地動物的身體特徵
- 透過互動遊戲，探索氣候變化對動物的影響，並了解實踐環保生活的重要性
- Discover the unique body features of polar animals by observing an animal educational demonstration
- Explore the impact of climate change on animals and the importance of sustainable living through interactive games

活動形式 Programme Format

- 動物教育示範、互動遊戲
- Animal educational demonstrations; Interactive games

時間 Time	45 分鐘 Minutes	
費用 Fee	學生（每位） Student (Per person) HK\$90	
名額（學生） Capacity (Students)	100 - 450	100 - 200

園內活動 - 大型學習日配套

In-park Programmes - Ocean Park School-wide Activity Package



海洋公園一直致力締造難忘、有趣好玩、富娛樂性及具教育意義的遊樂體驗，亦是全校學習日或學校旅行的首選地點。本園由專業團隊提供一站式服務，全程跟進及協助籌備，致力配合學校需要，務求活動安排更臻完備。活動內容可參考園內小學活動。

Ocean Park is a popular destination for large-scale school activities with our professional support and fun-filled programmes. We are committed to provide memorable experiences that are fun, entertaining, and educational while promoting life-long learning and conservation advocacy through schools outing. This package applies to all in-park programmes for Primary students.



學生人數達三百人的本地學校大型活動即可獲免費一站式服務
Free one-stop service will be provided to local schools outings of 300 or more students

內容將因應活動規模有所調整
Contents are subject to change depending on the event scale

園內活動 - 全方位學習之旅 (學生團體票)

In-park Programmes - Life-wide Learning Journey (Student Group Tickets)



「全方位學習之旅」配合香港學校課程，活動包括海洋公園入場門票、海洋公園網上全方位探索秘笈，以及讓學生自主探索的遊蹤任務工作紙。

The "Life-wide Learning Journey" is in line with the Hong Kong School Curriculum. The package includes admission to the Park, online "Life-wide Learning Discovery at Ocean Park" and an Orienteering Mission Worksheet.



時間 Time	全日自由探索 Free Exploration
費用 Fee	學生 (每位) Student (Per person) HK\$110

掃描二維碼，前往活動網頁瀏覽
申請表格及相關條款及細則

Scan the QR code to visit the event
website for the application form and
related terms and conditions



姊妹學校教育活動

Sister School Programme



全新
NEW

小小生物調查員

Little Biological Investigator

海洋公園「姊妹學校教育活動」為香港與內地學校提供交流平台；透過動物觀察、互動遊戲和專題研討，讓兩地學生彼此交流分享，提升對自然保育意識，從而學會欣賞和珍惜大自然。兩地學生在課程中互相學習，有趣豐富的學習體驗亦可拓展視野。

The “Sister School Programme” of Ocean Park provides an exchange platform between Hong Kong and Mainland schools. Through animal observation, interactive activities and project learning, the programme facilitates exchange and sharing among students from different localities, raising their awareness of ecological conservation and their love for nature. Hong Kong and Mainland students are able to learn from each other and broaden their horizons through fun-filled and enriching learning experiences.



活動特色 Programme Highlights

- 觀察和記錄動物的特徵，探索海洋及陸地的生物多樣性
- 討論和互動遊戲鼓勵同學們互相分享所學和發現，促進香港與內地學生彼此交流
- Observe and record the physical features of animals, discovering biodiversity in aquatic and terrestrial environment
- Encourage the exchange of finding between Hong Kong and Mainland students through discussion and games, fostering sharing and co-learning

活動形式 Programme Format

- 動物觀察、互動遊戲、交流分享
- Animal observation; Interactive games; Sharing sessions

時間 Time	90分鐘 Minutes
費用 Fee	香港及內地學生（每位） Hong Kong and Mainland Student (Per person) HK\$220
名額（學生） Capacity (Students)	20-40



到校互動講座 Outreach Interactive Seminar

講座設有兩大主題：本地生物多樣性及海洋公園工作實錄，以供學校選擇。

To cater a large group of students across classes and levels at school, OPAHK offers the Outreach Interactive Seminar with two thematic options: Local Biodiversity and Workplace Observations in Ocean Park.



活動特色 Programme Highlights

- 本地生物多樣性講座：認識香港的野生動植物及棲息地，並了解如何與野生生物共享地球資源，掌握可持續發展理念
- 海洋公園工作實錄：透過動物護理員的工作訪談影片，了解所需要的工作態度、技能和知識
- Local Biodiversity Seminar: Get to know more about Hong Kong wildlife and their habitats and explore a sustainable lifestyle
- Workplace Observations in Ocean Park: Understand the required soft skills and knowledge of animal caretakers through watching videos on husbandry practices

活動形式 Programme Format

- 專題學習、訪談影片、互動遊戲
- Case-based learning; Interview video; Interactive games



到校自然探索嘉年華 Outreach Carnival - Nature Exploration

「到校自然探索嘉年華」鼓勵學生透過不同的攤位遊戲，發掘大自然所帶來的驚喜，了解有趣的動植物知識及保育資訊。

Students are encouraged to explore the wonders of nature and discover interesting facts of flora and fauna through game booths.



活動特色 Programme Highlights

- 以五感探索大自然，並深入了解不同動物的野外生存技能
- 觸摸大自然裏找到的素材，學會欣賞大自然的美妙
- Explore the nature with five senses and get to know more about the survival skills of different animals; Understand how their special body features help them adapt to the environment
- Appreciate the value and beauty of nature through natural materials using five senses at interactive game booths

活動形式 Programme Format

- 互動攤位遊戲、自然素材接觸
- Interactive game booths; Natural materials play

活動 Programme	到校互動講座 Outreach Interactive Seminar	到校自然探索嘉年華 Outreach Carnival - Nature Exploration
時間 Time	45 分鐘 Minutes	90 分鐘 Minutes
費用 Fee	HK\$4,000	HK\$15,000
名額 (學生) Capacity (Students)	20 - 300	100 - 300

Nature+ 活動 Nature+ Programme



本院設有不同主題的自然生態教育活動，讓學生親身走進香港各類生態環境中，探索本地生物多樣性，並從中學習欣賞和珍愛大自然資源。此活動只適用於小四至小六學生。

OPA HK's Nature+ Programme provides students with the opportunity to immerse themselves in nature and explore Hong Kong biodiversity. Throughout this learning journey, students are inspired to appreciate and treasure our natural resources. The programme is only applicable to Primary 4 – 6 students.

生態奇趣遊 Nature Explorer



活動特色 Programme Highlights

- 考察海洋公園百草生態徑或香港郊野及城市公園，發掘香港動植物的蹤跡並研究生物間的共生關係
- 學習生態普查技巧，配合現代科技例如紅外線攝錄機、內視鏡，探索香港物種
- Uncover the symbiotic relationships between species at Ocean Park Eco-herbal Trail, local and urban parks during site inspection
- Discover the nature and acquire the skills in conducting an ecological survey with infrared camera, endoscope, etc.

活動形式 Programme Format

- 海洋公園百草生態徑、香港郊野或城市公園考察、動植物觀察
- Ocean Park Eco-herbal Trail, local country park or urban park visit; Species observations

時間 Time	90 分鐘 Minutes
費用 Fee	學生（每位） Student (Per person) HK\$220
名額（學生） Capacity (Students)	20-40

共建生態園 Eco Garden at School*

活動特色 Programme Highlights

- 深入認識蝴蝶及香港本地動植物後，與學生於校園裏共同建造生態友善花園，了解生物成長過程
- Construct an eco garden at school with students after learning more on native species and discover their stages of life

活動形式 Programme Format

- 建造校內生態園、生態調查、到校生態工作坊、園內生態講座
- Eco garden construction at school; Ecological survey; Ecological workshop at school; In-park seminar



鳥巢工程師 Artificial Bird Nest at School*

活動特色 Programme Highlights

- 學習組裝及設計人工鳥巢，認識香港本土鳥類的生態及保育知識，了解城市化對動物的影響
- Acquire skills in assembling artificial bird nest and learn about the ecology and conservation of local bird species in Hong Kong, as well as understand the impact of urbanisation on animals

活動形式 Programme Format

- 建造人工鳥巢、生態調查、到校生態工作坊、園內生態講座
- Artificial bird nest construction; Ecological survey; Ecological workshop at school; In-park seminar



* 上述活動不包括後續生境管理及灌溉系統或人工鳥巢安裝，並需於一個學年內完成。
The above programme does not include the maintenance of eco garden or irrigation system, or bird nest installation, and needs to be conducted within a school year.

* 教師如對以上活動有興趣，可電郵至 opahk-news@oceanpark.com.hk 查詢。
If teachers are interested in above programmes, please send your enquiry via email to opahk-news@oceanpark.com.hk.

Nature+ 活動 - 境外生態之旅

Nature+ Programme - Outbound Eco Study Tours



海洋公園與世界各地的動物保育機構及專家一直緊密聯繫，我們期望透過舉辦境外遊學團，鼓勵學生放眼世界，擴闊視野，一同探索各地生態資源及人文生活。

本系列活動為境外生態深度遊學團，為期五至七天，行程包括到四川或其他自然生境考察，尋找野生動物蹤跡，學生更有機會與當地機構專家交流。另外，學生會於出發前參加「非一般的簡介會」，內容包括參觀園內展館及參與生態奇趣遊，率先感受生態探索的樂趣，同時為旅程做好充足的準備。

Ocean Park has always been in close contact with animal conservation institutions and experts around the world to organise collaborative outbound study tours. We encourage students to broaden their horizons, explore not only the ecological resources of different regions but also cultures.

The Outbound Eco Study Tours last for 5 to 7 days, the itinerary includes Sichuan visit and wildlife trace finding. Whilst, students will have the opportunity to discuss with experts from respective local institutions. A pre-tour "Extraordinary Briefing Session" will be held to give a taste of ecological exploration: exhibition in Ocean Park, and Nature Explorer.

四川生態之旅

Sichuan Nature Programme

- 成為公民科學家，參與野生大熊貓普查工作
- 體驗大熊貓護理員的工作，照顧大熊貓的起居飲食
- 考察當地保護區，深入認識大熊貓的伴生動物
- Become a citizen scientist and participate in the wild giant panda survey
- Experience the duties of a giant panda caretaker to acquire the skills of taking care of giant pandas
- Explore animal species that accompany giant panda in local reserved areas



臥龍中華大熊貓苑神樹坪基地
Shenshuping Base of China
Conservation and Research
Centre for giant pandas in Wolong



生態調查 - 安裝紅外線相機
Ecological Survey -
Infrared Camera
Installing Experience



尋找野生動物 - 觀鳥活動
Searching for Wildlife -
Bird-watching

* 行程及內容可按學生學習需要調節。

Itinerary and content can be adjusted to suit students' learning needs.

* 本院提供其他境外生態之旅目的地。教師如對以上活動有興趣，可電郵至 opahk-news@oceanpark.com.hk 查詢。

OPAHK offers other outbound eco study tour destinations. If teachers are interested in above programmes, please send your enquiry via email to opahk-news@oceanpark.com.hk.

免費網上教材套

Free Online Education Kit



掃描此二維碼
了解詳情

Please scan this
QR code for
more details



小紅熊和自然守護隊

Redd and the Nature Guardians

老師與學生可隨時隨地使用此教材，運用五種感官及科學思維，一起發掘大自然的奧秘！

Flexibility is the key! Teachers and students can access to this kit anytime, anywhere to explore the wonders of nature using the five senses and scientific thinking!



- 電子故事書 E-book
- 精彩動畫 Animation
- 五感發現紀錄 Five Senses Discovery Record
- 教學指引 Teaching Guides
- 「小紅熊 Redd's Nature Play Party」YouTube 教育頻道
"Redd's Nature Play Party" YouTube Channel



海豚搜證三步曲 Dolphin Tracking Trilogy



活動特色 Programme Highlights

- 觀看海豚教育示範影片，認識哺乳類動物的特徵
- Watch videos on animal demonstrations to understand the characteristics of mammals



本地生物多樣性大搜查 Local Biodiversity Exploration



活動特色 Programme Highlights

- 認識本地動植物及其棲息地，並學習生態普查技巧
- Learn about Hong Kong wildlife and acquire the skills to conduct ecological survey



簡單機械研究所 Arcade Games Designers



活動特色 Programme Highlights

- 回想日常生活中的簡單機械並進行互動實驗
- Recall the simple machines used in daily life through interactive experiments



海洋公園工作實錄 - 動物護理員的日常工作 Workplace Observations in Ocean Park - Animal Husbandry



活動特色 Programme Highlights

- 觀看動物護理員的工作訪談影片，了解其工作態度、技能和知識
- Understand the skills and knowledge of animal caretakers through videos on husbandry

時間 Time	45 分鐘 Minutes
費用 Fee	HK\$3,000
名額 (學生) Capacity (Students)	20-150



海外限定活動 Overseas Programme

新加坡動物園海外交流 - 雨林保育隊 Singapore Zoo Overseas Exchange - Rainforest Guardian

活動特色 Programme Highlights

- 與新加坡動物園合辦，讓學生了解熱帶雨林與人類之間的關係，反思如何善用大自然資源
- 新加坡教育大使介紹其園區內的熱帶雨林動物，並介紹新加坡的保育工作
- Collaborate with Singapore Zoo to uncover the relationships between humans and rainforest, reflect on how natural resources can be shared
- Introduce rainforest animals and conservation work in Singapore by the educator from Singapore Zoo



時間 Time	45 分鐘 Minutes
費用 Fee	HK\$6,000
名額 (學生) Capacity (Students)	20-150

香港海洋公園保育基金 - 教育活動

Ocean Park Conservation Foundation, Hong Kong - Education Programmes



同心保育大嶼山泥灘生物多樣性*

Safeguarding the Lantau Intertidal Mudflat Biodiversity*

小學校園泥灘普查工作坊

Primary School Mudflat Ecosystem Educational Workshop

以公民科學為主題的「小學校園泥灘普查工作坊」，模擬泥灘生境，讓小四至小六學生在校園內學習及體驗如何進行泥灘生態普查。透過泥灘生態調查，收集物種的數據如分佈、數量等，以監測各種生物的變化。

Be a citizen scientist and conduct survey on an "mobile" mudflat! A mudflat habitat simulator that allows P.4 – P.6 students to learn about mudflat habitat and biodiversity survey method in school. Through collecting data of distribution and abundance of plants and animals on mudflat from survey, that helps us monitor the changes of different species.



活動特色 Programme Highlights

- 以泥灘的實景報置，讓同學「身臨其境」地體驗泥灘生境並完成生物多樣性普查
- 除了記錄生物數據，同學們還要處理還有常見的泥灘威脅，例如海洋垃圾及廢棄漁具
- Simulate mudflat scenes in school. Allowing students "immersively" experience the mudflat habitat and complete a biodiversity survey
- Deal with wildlife threats on mudflats such as marine debris and abandoned fishing gears by students

*本活動由大嶼山保育基金資助。 This Programme is funded by Lantau Conservation Fund.

活動形式

Programme Format

- 3小時的教育講座及泥灘普查體驗工作坊
- 3 hours including educational seminar and experience workshop

活動時期 Programme Period	2025年9月至2026年5月 September 2025 to May 2026
名額 (學生) Capacity (Students)	每校 Each school - 40
名額 (學校) Capacity (Schools)	10
費用 Fee	全免 Free

如欲了解詳情或報名，請致電至(+852) 3923 2704或電郵至opcf@oceanpark.com.hk。

For more details or application, please contact us via (+852) 3923 2704 or email to opcf@oceanpark.com.hk.

活動詳情

Programme Details



現凡參加小學活動的學生，即可以優惠價HK\$20換購「遊蹤任務」工作紙；而繳付額外留園費用的學生則可免費獲贈一份。

Students participating in primary programmes could get a copy of the Orienteering Mission Worksheet for HK\$20! Students who pay the stay-behind surcharge can get it for FREE.

自然體驗班 | Nature Experience

活動 Programme		國寶守護隊 Panda Protectors	大熊貓營養師 Panda Nutritionist	珊瑚拯救隊 Coral Rescue Team	邂逅 海洋生物 Meet Marine Animals	*搜證遊學豚 *Exploration with Dolphins	*海岸大歷險 *Coastal Adventure
名額（學生）Capacity (Students)		20 - 40					
時間 Time	09:30 - 10:15	✓	✓		✓		
	10:15 - 11:00	✓	✓	✓	✓	✓	
	11:00 - 11:45	✓	✓	✓	✓		✓
	11:45 - 12:30	✓	✓	✓	✓		✓
	12:30 - 13:15	✓	✓	✓	✓		
	13:15 - 14:00	✓	✓	✓	✓		
	14:00 - 14:45	✓	✓	✓	✓		
	14:45 - 15:30	✓	✓	✓	✓		
地點 Location		海濱樂園 The Waterfront				高峰樂園 The Summit	
費用 Fee^		學生（每位）Student (Per person) HK\$110					
		老師（每位）Teacher (Per person) HK\$110					
額外留園費用 Stay-behind Surcharge		學生（每位）Student (Per person) HK\$40					
		老師（每位）Teacher (Per person) HK\$125					

* 逢星期三不設「搜證遊學豚」活動。
Exploration with Dolphins is NOT applicable on Wednesday.

* 逢星期四不設「海岸大歷險」活動。
Coastal Adventure is NOT applicable on Thursday.

^ 活動費用包括教育活動及一小時自由參觀。
Programme fee includes education programme and 1-hour self-visit at the Park.

海洋公園生涯規劃活動 (小四至小六) | Life Planning Education in Ocean Park (Primary 4 - 6)

活動 Programme		*動物救援 *Animal Rescue	水族護理 Aquarist	"纜車設計 及運作 "Cable Car Design and Operation	"海洋哺乳類 動物訓練及護理 "Marine Mammal Training and Husbandry	陸生動物 訓練及護理 Terrestrial Animal Training and Husbandry	"維生系統 及維修 "Life Support System and Maintenance	機動遊戲 運作及維修 Ride Operation and Maintenance
名額 (學生) Capacity (Students)		15 - 20						
時間 Time	09:30 - 10:15	✓						
	10:15 - 11:00	✓	✓					✓
	11:00 - 11:45	✓		✓		✓	✓	✓
	11:45 - 12:30	✓			✓			✓
	12:30 - 13:15		✓					✓
	13:15 - 14:00							
	14:00 - 14:45	✓						
地點 Location		海濱樂園 The Waterfront				高峰樂園 The Summit		
費用 Fee^		學生 (每位) Student (Per person) HK\$110						
		老師 (每位) Teacher (Per person) HK\$110						
額外留園費用 Stay-behind Surcharge		學生 (每位) Student (Per person) HK\$40						
		老師 (每位) Teacher (Per person) HK\$125						

* 「動物救援」活動只限星期三及星期四舉行。
Animal Rescue is ONLY applicable on Wednesday and Thursday.

^ 活動費用包括教育活動及一小時自由參觀。
Programme fee includes education programme and 1-hour self-visit at the Park.

* 「纜車設計及運作」、「海洋哺乳類動物訓練及護理」及「維生系統及維修」只限星期一至五舉行。
Cable Car Design and Operation, Marine Mammal Training and Husbandry and Life Support System and Maintenance are ONLY applicable from Monday to Friday.

凡購滿十張學生票，可獲得隨團老師門票乙張，其持有者可隨學生參與活動。其餘老師須另外繳付費用進園，而費用不包括參與活動。學生不可使用老師入園門票，反之亦然。所有參加者須於完成活動後離開海洋公園。如欲繼續使用本園設施，必須事先申請，並繳付額外留園費用。活動費用有效期至2026年8月31日。

Ocean Park issues 1 accompanying teacher ticket for every 10 student tickets purchased per group, so they can accompany students to the programme. An extra fee applies for any additional teacher to enter the Park, and the fee does not include the participation of the programme. Students cannot use the teacher admission tickets, and vice versa. All participants are expected to leave Ocean Park after the education programme. Participants who would like to remain at the Park and enjoy its facilities after the programme must apply in advance and pay a stay-behind surcharge. The programme fees are valid until 31 August 2026.

自然探索班 | Nature Exploration

活動 Programme	海陸生物放大鏡 The Beauty in Biodiversity	動物生存秘笈 Tactics in the Wild
名額 (學生) Capacity (Students)	20 - 40	
時間 Time	09:30 - 10:15	✓
	10:15 - 11:00	✓
	11:00 - 11:45	✓
	11:45 - 12:30	✓
	12:30 - 13:15	✓
	13:15 - 14:00	✓
	14:00 - 14:45	✓
	14:45 - 15:30	✓
地點 Location	海濱樂園 The Waterfront	高峰樂園 The Summit
費用 Fee^	學生 (每位) Student (Per person) HK\$90	
	老師 (每位) Teacher (Per person) HK\$110	
額外留園費用 Stay-behind Surcharge	學生 (每位) Student (Per person) HK\$40	
	老師 (每位) Teacher (Per person) HK\$125	

^活動費用包括教育活動及一小時自由參觀。
Programme fee includes education programme and 1-hour self-visit at the Park.

互動講座 | Interactive Theatre

活動 Programme	大熊貓成長之路 Growth of Giant Panda	威威旅行團 Whiskers Tour	向極地出發 Journey to the Polar
名額 (學生) Capacity (Students)	100 - 450		100 - 200
時間 Time	10:15 - 11:00		11:00 - 11:45
地點 Location	海濱樂園 The Waterfront		高峰樂園 The Summit
費用 Fee^	學生 (每位) Student (Per person) HK\$90		
	老師 (每位) Teacher (Per person) HK\$110		
額外留園費用 Stay-behind Surcharge	學生 (每位) Student (Per person) HK\$40		
	老師 (每位) Teacher (Per person) HK\$125		

^活動費用包括教育活動及一小時自由參觀。
Programme fee includes education programme and 1-hour self-visit at the Park.

全方位學習之旅 (學生團體票) | Life-wide Learning Journey (Student Group Tickets)

門票種類 Type	小學學生票 Primary School Student Ticket	額外成人票 Additional Adult Ticket (購買一張學生票可購買額外成人票最多兩張) (2 additional adult tickets can be purchased per 1 student ticket)
費用 (每張) Fee (Per Ticket)	HK\$110	HK\$235

凡購滿十張學生票，可獲得隨團老師門票乙張，其持有人可隨學生參與活動。其餘老師須另外繳付費用進園。學生不可使用老師入園門票，反之亦然。活動費用有效期至2026年8月31日。

Ocean Park issues 1 accompanying teacher ticket for every 10 student tickets purchased per group, so they can accompany students to the programme. An extra fee applies for any additional teacher to enter the Park, and the fee does not include the participation of the programme. Students cannot use the teacher admission tickets, and vice versa. The programme fees are valid until 31 August 2026.

活動詳情

Programme Details

姊妹學校教育活動 | Sister School Programme

活動 Programme	*小小生物調查員 *Little Biological Investigator	
名額 (學生) Capacity (Students)	20-40	
時間 Time	10:30-12:00	
	12:00-13:30	
	14:30-16:00	
	16:00-17:30	
地點 Location	海濱樂園 The Waterfront	
費用 Fee	香港學校 Hong Kong School	內地學校 Mainland School
	^學生 (每位) Student (Per person) HK\$220	
	*老師 (每位) Teacher (Per person) HK\$110	*老師 (每位) Teacher (Per person) HK\$250
額外留園費用 Stay-behind Surcharge	*老師 (每位) Teacher (Per person) HK\$125	

* 香港及內地學校必須同時申請參加姊妹學校教育活動。

Hong Kong and Mainland school must apply the Sister School Programmes as a group.

^ 學生費用包括教育活動及自由參觀。

Student's programme fee includes education programme and self-visit at the Park.

* 凡購滿十張學生票，可獲得隨團老師門票乙張，其持有人可隨學生參與活動。其餘老師須另外繳付費用進園，而費用不包括參與活動。

Ocean Park issues 1 accompanying teacher ticket for every 10 student tickets purchased per group, so they can accompany students to the programme. An extra fee applies for any additional teacher to enter the Park, and the fee does not include the participation of the programme.

(香港學校適用) 隨團及額外老師門票不包括自由參觀。完成活動後，老師如欲繼續使用本園設施，必須事先申請，並繳付額外留園費用。

(Applicable to Hong Kong school) Accompanying and additional teacher tickets do not include self-visit at the Park. Teachers who would like to stay behind after the programme must apply in advance and pay a stay-behind surcharge.

(內地學校適用) 隨團及額外老師門票包括自由參觀。

(Applicable to Mainland school) Accompanying and additional teacher tickets include self-visit at the Park.

到校活動 | School Activity

活動 Programme	到校互動講座 Outreach Interactive Seminar	到校自然探索嘉年華 Outreach Carnival - Nature Exploration
名額 (學生) Capacity (Students)	20 - 300	100 - 300
時間 Time	每節 45 分鐘 Each session lasts for 45 minutes	每節 90 分鐘 Each session lasts for 90 minutes
費用 Fee	每節 Each session HK\$4,000	每節 Each session HK\$15,000

網上活動 | Online Activity

活動 Programme	海豚搜證三部曲 Dolphin Tracking Trilogy	簡單機械研究所 Arcade Games Designers	海洋公園工作實錄 - 動物護理員的 日常工作 Workplace Observations in Ocean Park - Animal Husbandry	本地生物 多樣性大搜查 Local Biodiversity Exploration	新加坡動物園 海外交流 - 雨林保育隊 Singapore Zoo Overseas Exchange - Rainforest Guardian
名額 (學生) Capacity (Students)	20 - 150				
時間 Time	每節 45 分鐘 Each session lasts for 45 minutes				
費用 Fee	每節 Each session HK\$3,000				每節 Each session HK\$6,000

活動費用有效期至2026年8月31日。 The programme fees are valid until 31 August 2026.

Nature+活動（小四至小六） | Nature+ Programme (Primary 4 - 6)

活動 Programme	生態奇趣遊 Nature Explorer
名額（學生） Capacity (Students)	20 - 40
時間 Time	09:30 - 21:00 每節90分鐘 Each session lasts for 90 minutes
地點 Location	海濱樂園 The Waterfront / 各區郊野公園或市區公園 Country parks or urban parks
費用 Fee	學生（每位） Student (Per person) HK\$220
	老師（每位） Teacher (Per person) HK\$110
額外留園費用^ Stay-behind Surcharge	學生（每位） Student (Per person) HK\$40
	老師（每位） Teacher (Per person) HK\$125

活動 Programme	共建生態園 Eco Garden at School	鳥巢工程師 Artificial Bird Nest at School
名額（學生） Capacity (Students)	20 - 40	20
時間 Time	共兩節，每節90分鐘 Each session lasts for 90 minutes, 2 sessions in total	共四節，每節90分鐘 Each session lasts for 90 minutes, 4 sessions in total
地點 Location	海洋公園及學校 Ocean Park and School	
費用 Fee	教師如對以上活動有興趣，可電郵至opahk-news@oceanpark.com.hk查詢。	
報名申請方法 How to Apply	If teachers are interested in above programmes, please send your enquiry via email to opahk-news@oceanpark.com.hk.	

^於海洋公園海濱樂園舉行的活動，所有參加者須於完成活動後離開海洋公園。如欲繼續使用本園設施，必須事先申請，並繳付額外的留園費用。
For Programmes conducted in The Waterfront of Ocean Park, all participants are expected to leave the Park after the education programme. Participants who would like to remain at the Park and enjoy its facilities after the programme must apply in advance and pay a stay-behind surcharge.

凡購滿十張學生票，可獲得隨團老師門票乙張，其持有者可隨學生參與活動。其餘老師須另外繳付費用進園。學生不可使用老師入園門票，反之亦然。所有參加者須於完成活動後離開海洋公園。如欲繼續使用本園設施，必須事先申請，並繳付額外留園費用。活動費用有效期至2026年8月31日。

Ocean Park issues 1 accompanying teacher ticket for every 10 student tickets purchased per group, so they can accompany students to the programme. An extra fee applies for any additional teacher to enter the Park. Students cannot use the teacher admission tickets, and vice versa. All participants are expected to leave Ocean Park after the education programme. Participants who would like to remain at the Park and enjoy its facilities after the programme must apply in advance and pay a stay-behind surcharge. The programme fees are valid until 31 August 2026.

Nature+活動 - 境外生態之旅 | Nature+ Programme - Outbound Eco Study Tours

活動 Programme	四川生態之旅 Sichuan Nature Programme
名額（學生） Capacity (Students)	20 - 40
適合出團季節 Recommended Seasons	十月至四月 October to April
費用 Fee	視乎季節及當時機票酒店價格而定。 The fee depends on the seasonal price of flight tickets and hotels
活動申請方法 How to Apply	本院提供其他境外生態之旅目的地。教師如對以上活動有興趣，可電郵至opahk-news@oceanpark.com.hk查詢。 OPAHK offers other outbound eco study tour destinations. If teachers are interested in above programmes, please send your enquiry via email to opahk-news@oceanpark.com.hk.

活動申請方法（本地學校教育活動）

香港海洋公園學院之本地學校教育活動於2025年9月1日至2026年8月31日期間舉辦。教育活動逢星期一至星期六舉辦，公眾假期及本園指定不適用日子除外。活動名額有限，先到先得。每月十五日為下個月份教育活動報名的截止日期。

1. 請於本院網頁下載申請表，然後以電郵遞交至opahk-news@oceanpark.com.hk。
2. 各活動的學生名額均設上下限，詳情請參閱各單張。若報名學生人數少於最低名額要求，貴校須付最低名額款項。
3. 每位學生須參加最少一項活動。
4. 本院提供之課程為教育活動，並非親子活動。
5. 本院將於收到申請表後十個工作天內聯絡申請人，通知申請結果並發出「付款通知書」。若貴校在期限後仍未收到通知，請致電本院職員（+852）3923 2323（請於接通後選擇語言，續按[1]，再按[4]字）。
6. 請根據本院所發出之「付款通知書」上的指示完成付款程序。本院接受信用卡、現金轉賬及支票繳交費用。
7. 校方於收到「付款通知書」後，須於付款期限前繳交費用。
8. 本院會於確認收到校方付款後，以電郵發出「申請確定信」給校方，收據則於活動當日交予學校代表。
9. 入場票需於參觀當日憑確定信及隨團老師的身份證明文件或教職員證明文件到本園票務部領取。

條款及細則

1. 本活動只適用於香港特別行政區教育局學校級別中的「幼稚園」、「小學」或「中學」（各級別中的特殊學校亦包括在內）；並不適用於獲教育局歸類為「其他」的學校。
2. 本院活動之參加者必須為申請表上列明之學校的註冊學生。
3. 所有活動均以粵語、英語或普通話進行，校方須於申請活動時於申請表上列明。
4. 若校方未能於限期前繳交費用或完成活動申請手續，本院保留取消活動申請的權利。
5. 入場門票只可於指定日期使用，一經確定不得更改。所有已繳交之費用恕不退還。
6. 參加者須準時到達集合地點，逾時不候，遲到者不獲補時安排。
7. 額外老師門票費用不包括參與活動，持票人需於公園開放後方可入園，並需按公眾順序使用公園設施。
8. 入場人士可攜帶嬰兒食物，或只於用作個人食用的合理份量之外來食物或飲品進入公園。如有任何查詢，請致電（+852）3923 2323（請於接通後選擇語言，續按[1]，再按[0]字）與海洋公園遊客服務部職員聯絡。
9. 請勿攜帶任何超過 56cm x 36cm x 23cm 之行李或大型物品進入本公園內之景點或劇場。閣下可自費將行李寄存於行李寄存服務處（設於海濱樂園夢幻水都內的嬰兒車及輪椅租用處旁）。
10. 除非經本園事先批准，否則所有於本園拍攝之照片或影像均不得作商業用途。遊客進入公園後，即代表本園有權採用遊客的相片或圖像作教育或宣傳用途。
11. 除非經本園事先批准，否則申請本院活動之學校均不得利用「香港海洋公園」及「香港海洋公園學院」之名義作公開宣傳用途。
12. 學生參加指定活動或須自行乘坐海洋列車前往活動集合地點或景點。
13. 如活動舉行當日遇到以下情況而令活動取消，本院將為受影響之學校重新安排活動時間，活動將於原定參觀日期起計之一個月內舉行：
 - 活動開始前2小時天文台發出紅色或黑色暴雨警告信號，或
 - 活動開始前2小時天文台發出一號戒備信號或以上之熱帶氣旋警告信號，或
 - 教育局宣佈停課。
14. 活動內容及日期可能因應動物及天氣狀況而作出更改或取消。動物教育示範及機動遊戲體驗可能因惡劣天氣狀況而取消。活動內容如有任何更改，恕不另行通知。
15. 如天文台發出黃色暴雨警告信號，「搜證遊學豚」、「海岸大歷險」、「互動講座」及「海洋公園生涯規劃活動（海洋哺乳類動物訓練及護理）」的動物教育示範將會作出更改或取消。
16. 海洋公園部份設施或會因工程進行而關閉，不作另行通知，敬請留意。
17. 任何人士須遵守海洋公園入口處及 / 或其他位置所示之海洋公園附例、安全規則及公園守則。海洋公園對公園內任何人士之任何財物的任何種類之損失或損害概不承擔任何責任。
18. 海洋公園保留所有更改活動申請的條款及批核申請之最終決定權。

Application Method (Local School Education Programme)

Ocean Park Academy Hong Kong (OPAHK) programmes are available from Mondays to Saturdays, from 1 September 2025 to 31 August 2026, except public holidays and blockout dates. All applications are considered on a first-come, first-served basis. The monthly deadline is the 15th of the previous month.

1. Application forms may be downloaded from our website and submitted via email to opahk-news@oceanpark.com.hk.
2. Each programme requires a minimum number of student participants and has a maximum capacity. For details, please refer to our booklets. If the number of registered students is fewer than the minimum requirement, your school will be requested to pay for the minimum.
3. Please select at least one programme for each student.
4. The activities offered by Ocean Park Academy Hong Kong (OPAHK) are part of our educational programme. They are not parent-child activities.
5. Applicants will be notified of the application result and issued a Payment Notice within ten working days upon our receipt of the duly completed application form. If you fail to receive any notification within this timeframe, please contact our staff at (+852) 3923 2323 (select language and press [1], and then [4]).
6. Please follow the instructions on the Payment Notice to complete the payment. Applicants can settle payment by credit card, bank transfer or cheque.
7. The payment must be settled by the payment due date upon receipt of the Payment Notice.
8. A Confirmation Letter will be sent to the school by email after the payment is duly received and confirmed by OPAHK. The receipt will be issued on the visiting day for collection.
9. Tickets are available for collection upon presentation of the Confirmation Letter and valid identification documents of accompanying teacher at the Park's Ticketing Office on the date of visits.

Terms & Conditions

1. The programmes are only available for schools classified under the school level of Education Bureau of the HKSAR Government as "kindergartens", "primary schools" or "secondary schools" (including special schools among these school levels), and not available for schools classified as "others".
2. Participants of the programmes must be the registered students at the school indicated on the application form.
3. All programmes are conducted in Cantonese, English or Putonghua and the requests should be indicated in advance on the application form.
4. If the payment cannot be settled by the payment due date or if the application is not duly completed, OPAHK reserves the right to cancel the application.
5. Tickets can only be used on the date of validation. No refund or rescheduling will be made after confirmation.
6. Participants must be punctual in arriving at the designated gathering locations. Latecomers will not be entertained, and the programme cannot be extended beyond the scheduled time.
7. Additional teacher tickets' holder does not include the participation of the programme. Ticket holders may enter the Park only after it opens and must use the Park facilities in accordance with public order.
8. Participants may bring in baby food and a reasonable quantity of food and beverages for personal consumption. For further information, please contact our staff at (+852) 3923 2323 (Select the language and press [1], and then [0]).
9. Baggage and bulky item over the size of 56cm x 36cm x 23cm are not allowed in any attractions or theatre inside the Park. You may store them at our Baggage Rental Counter (next to the Stroller and Wheelchair Rental Counter at Aqua City, Waterfront).
10. All photos and videos taken at Ocean Park are not allowed for commercial use without prior approval from Ocean Park Corporation. Admission to the Park signifies your permission and agreement for Ocean Park to take and use your photographs and videos for educational and promotional purposes.
11. Applicants are not allowed to advertise in the name of "Ocean Park Corporation" or "Ocean Park Academy Hong Kong" without prior approval from Ocean Park Corporation.
12. Students participating in specific programmes might need to take the Ocean Express to the gathering locations or attractions on their own.
13. In the occurrence of the following events, OPAHK will reschedule the visits for schools affected to a new date within a month of the affected day:
 - The Hong Kong Observatory issues Red or Black Rainstorm Warning Signal 2 hours before the visit, or;
 - The Hong Kong Observatory issues Tropical Cyclone Warning Signal Number 1 or higher 2 hours before the visit, or
 - The Education Bureau announces class suspension of all schools.
14. Programme contents and dates are subject to change or cancellation depending on animal and weather conditions. Animal educational demonstrations and rides experience may be cancelled due to adverse weather conditions. Programme contents may be subject to change without prior notice.
15. When the Hong Kong Observatory issues an Amber Rainstorm Warning Signals, animal educational demonstrations in Exploration with Dolphins, Coastal Adventure, Interactive Theatre and Life Planning Education in Ocean Park (Marine Mammal Training and Husbandry) are subject to change or cancellation.
16. Ocean Park may suspend the operation and/or close any facilities for renovation work without prior notice.
17. All guests must comply with Ocean Park Bylaw, safety rules, and the Park's Rules and Regulations which are accessible at the entrance and other locations throughout Ocean Park. Ocean Park shall be under no liability or responsibility for any loss of any kind or any damage to any property of any person in the Park.
18. Ocean Park reserves the right to make the final decision on application procedure and approval.



超過 More than
1,600,000 名

學生由九十年代初至今參與過海洋公園的教育活動

Students have taken part in Ocean Park's education programmes since the early 1990s



超過 More than
140,000 名

學生於同一學年內參與海洋公園教育活動(過往一年內最高參與人數)

Students of all ages participated in education activities at the Park within the same academic year (Highest record within one academic year)



高達 More than
95%

受訪遊人對公園教育活動感到十分滿意(過往三年內最高數據)

Respondents were highly satisfied with the Park's education programmes (Highest record in 3 consecutive years)

電話 Tel.: **(+852) 3923 2323**

請於接通後選擇語言，續按[1]，再按[4]字聯絡海洋公園探索及教育部。
Once you have called the Hotline and selected the language, please press [1], and then [4] to contact the Discovery & Education Department.

電郵 Email: opahk-news@oceanpark.com.hk

網址 Website: <http://www.oceanpark.com.hk/education>



此刊物由大豆油墨印製

This prospectus is printed with soy ink

全港至大至好玩自「研」世界

Hong Kong's Biggest & Best Nature Playground



啟迪好奇
探索驚奇

Thrill of Discovery

參與保育聯盟
攜手為保育出力

Embark on a Conservation Journey by
Joining Ocean Park Conservation Alliance

讓學生自主探索
Become Self-directed Learners



香港海洋公園學院
Ocean Park Academy · Hong Kong

2025/26
中學活動
Secondary School
Programmes

香港海洋公園學院

Ocean Park Academy Hong Kong

香港海洋公園學院於2004年成立，一直致力在海洋公園多元豐富的環境中提供綜合和持續的教育活動。我們亦期望成為學校全方位學習活動的理想場地，讓不同年齡的學員在海洋公園歡樂的氣氛中認識大自然和保育。

Ocean Park Academy Hong Kong (OPAHK) was founded in 2004 to deliver education programmes in the diversified environment of Ocean Park. We aspire to become the ideal destination for life-wide learning where students of different ages can learn about nature and conservation in an enjoyable atmosphere.



目錄

Contents

	學界專業推薦 Recommendations from the Education Sector	P.3-4
	相關學習概念 Relevant Knowledge & Concept	P.5-6
	海洋公園保育聯盟 Ocean Park Conservation Alliance	P.7-8
 園內 In-park	自然體驗班 Nature Experience	P.9-11
	海洋公園生涯規劃活動 Life Planning Education in Ocean Park	P.12-13
	自然探索班 Nature Exploration	P.14
	互動講座 Interactive Theatre	P.15-16
	大型學習日配套 Ocean Park School-wide Activity Package	P.17
	全方位學習之旅（學生團體票） Life-wide Learning Journey (Student Group Tickets)	P.18
	姊妹學校教育活動 Sister School Programmes	P.19
 園外 Out-park	到校活動 School Activity	P.20
	Nature+ 活動 - 生態奇趣遊、共建生態園、鳥巢工程師 Nature+ Programme - Nature Explorer, Eco Garden at School, Artificial Bird Nest at School	P.21
	Nature+活動 - 境外生態之旅 Nature+ Programme - Outbound Eco Study Tours	P.22
 網上 Online	網上活動 Online Activity	P.23
	香港海洋公園保育基金 - 教育活動 Ocean Park Conservation Foundation, Hong Kong - Education Programmes	P.24
	活動詳情 Programme Details	P.25-28
	活動申請方法；條款及細則 Application Method; Terms & Conditions	P.29-30

學界專業推薦

Recommendations from the Education Sector



教育局局長
Secretary for Education
Education Bureau

蔡若蓮博士, JP
Dr. CHOI Yuk Lin, JP

教育局
Education Bureau

教育局致力以跨課程方式推廣環保教育，與環境及可持續發展教育相關的概念，已融入中小學課程。教育局鼓勵學校通過課堂內外的全方位學習活動，培養學生愛護大自然、珍惜資源、維護生態環境的意識和責任感，幫助他們從認知到情感，從情感到行動，身體力行實踐綠色生活，珍惜地球資源。海洋公園已成為支援學校推廣可持續發展教育的重要夥伴，感謝園方為推動大自然生態保育和相關教育作出的努力與貢獻。

The Education Bureau is committed to promoting environmental education through a cross-curricular approach. Concepts related to environmental protection and sustainable development have already been integrated into the primary and secondary school curricula. The Bureau encourages schools to nurture students' awareness and sense of responsibility in caring for nature, conserving resources, and protecting the ecological environment through both classroom teaching and a wide range of life-wide learning activities. This helps students progress through cognition, affection and action, thereby putting green living into practice and cherishing the Earth's resources.

Ocean Park is an important partner in supporting schools to advance education on sustainable development, and the Park's ongoing efforts and contributions in promoting ecological conservation and related education is appreciated.

節錄自海洋公園保育嘉年華活動致辭 Excerpt from the speech delivered at the Ocean Park Conservation Carnival

東華三院郭一葦中學
Tung Wah Group of Hospitals Kwok Yat Wai College

文可為校長
Mr. MAN Ho Wai, Principal

東華三院郭一葦中學有幸能參與「海洋公園保育聯盟」，讓同學參與「海馬同學會」多項高質素及有意義的全方位學習活動。海洋公園聯同業界專家，為學生量身打造各類課程與活動，使ESG（環境、社會、治理）教育不再侷限於理論，轉化為學生可以親自參與的實際行動。

透過參與「海洋公園保育聯盟」的多元項目，學生不僅能夠在日常生活中實踐保育理念，還能擔當起保育大使的角色，向社區傳遞環保訊息，為學生提供了一個走出課室及對社會作出貢獻的機會。我大力推薦這個充滿啟發性和實踐機會的活動！

Tung Wah Group of Hospitals Kwok Yat Wai College is honored to participate in "Ocean Park Conservation Alliance", which provides various high quality and meaningful life-wide learning opportunities. Ocean Park collaborates with professionals in education sector to establish fun-filled educational programmes and activities. Through participating in these programmes, students learn outside classroom with real-world context in environmental, social and governance sector.

By joining "Ocean Park Conservation Alliance", students act as conservation ambassadors which practise environmental and conservation measures in daily life, as well as promote community environmental awareness. Besides, Ocean Park provides students with opportunities of learning outside classroom and contribute to social development in environmental and conservation aspect. I highly recommend all schools to be the member of "Ocean Park Conservation Alliance" filled with inspiring, motivating and practical opportunities!

港大同學會書院
HKUGA College

海洋公園提供一個具吸引力的互動學習場地，及與全球議題息息相關的課程主題去締造具意義的學習經歷。透過小組討論以及案例分析等活動，學生能夠體驗學校以外的學習形式投入學習。我們的學生都非常享受海洋公園的活動。

The programmes offered by Ocean Park are very attractive and all closely related to global issues faced by the students. Instead of direct lecturing, students can learn the knowledge through group discussion and case analysis. It is a meaningful learning experience for our students, and we can see our students are really engaged in the programmes.

寶血女子中學

Precious Blood Secondary School

曾梓維副校長

Mr. TSANG Tsz-wai, Vice Principal

海洋公園「海馬同學會」為學生提供各種教育活動，例如減廢環保電影分享會，讓同學對垃圾回收有更深入的認識及了解，並藉此喚起他們對環保的決心。「海馬同學會」在校內舉辦了一項活動，在學校每個樓層放置垃圾分類箱，然後由海馬同學會的學生負責宣傳及收集。活動過後，校內同學對環保的意識比從前大大提高，可見活動獲得積極迴響，並令學生獲益良多。除此之外，海馬同學會亦舉辦了保護珊瑚活動，透過參觀海洋公園的活化珊瑚中心，同學學習到保育珊瑚的方式，以及環境污染對動植物的傷害。同學對活動的反應良好，更在回校後的午膳活動中，主動向全校學生分享保護珊瑚的重要性。海馬同學會是項極具意義的活動，故此鼓勵各位老師、同學積極參與。

Ocean Park Hong Kong's "Seahorse Rangers" programme provides students with various educational activities, for example, the Waste and Recycling Movie Sharing Session, helping them to gain a deeper understanding on waste recycling and arousing their commitment to environmental protection. "Seahorse Rangers" organised an activity in school, placing waste separation bins on each floor of the school, while students from the "Seahorse Rangers" were responsible for publicity and collection of bins. After the activity, students in school gained a higher awareness of environmental protection than before, indicating that the activity is positively received and benefits the students a lot. In addition, the "Seahorse Rangers" organised a coral conservation activity. During a visit to Ocean Park's Coral REEFStorage Centre, students learnt how to conserve corals and the harmful effects of environmental pollution on animals and plants. Students responded well to the activity and after returning to school, they even took the initiative to share the importance of coral conservation with the whole school during the lunch break. The "Seahorse Rangers" is a very meaningful programme and I highly encourage teachers and students to participate in it.



保良局羅氏基金中學

Po Leung Kuk Laws Foundation College

梁永健老師

Mr. LEUNG Wing Kin

在四川考察期間，學生能夠近距離觀察大熊貓，體驗難得的自然學習機會。尤記得一幕，大熊貓輕鬆咬斷胡蘿蔔，令不少學生對這個「人見人愛」的物種有了全新的認識。同學們亦親手拿着大熊貓糞便，跟護理員學習「便便的科學」——發現綠色的代表竹子、紅色的則是其他植物殘渣，有時甚至靠近嗅聞，探索當中隱含的生態奧秘。這些具高度學習效能的經驗，只有親身到繁育基地才能深刻體會。透過走出課室、親身參與，學生不僅建構了真實知識，更在過程中培養了關愛自然的態度與價值觀。

During the field trip to Sichuan, students had the rare opportunity to observe giant pandas up close, offering an unforgettable experiential learning experience. One memorable moment was watching a giant panda effortlessly snap a carrot in half, reshaping many students' perceptions of this universally beloved species. Students also engaged in a unique "Science of Feces" activity, examining panda droppings with caretakers — discovering that green indicated bamboo remains, red hinted at other plant materials, and sometimes even smelling the samples to uncover hidden ecological insights. Such high-impact learning experiences can only be gained through firsthand encounters at conservation centers. By stepping outside the classroom and actively engaging with nature, students not only constructed authentic knowledge but also nurtured a deeper sense of care and respect for the natural world.



聖若瑟英文中學

St. Joseph's Anglo-Chinese School

麥翠瑩主任 英文科主任

Ms. MAK Tsui Ying, English Panel Chairperson

海洋公園學院的「竹林隱士」課程，為本校中三學生帶來一次難得而深具啟發性的沉浸式學習體驗，讓他們更深入了解大熊貓的保育工作，以及全球瀕危物種所面對的種種挑戰。在教育大使的帶領下，學生透過一連串互動活動，不僅掌握了豐富的生態知識，更建立起對環境的責任感。課程鼓勵他們反思個人行為對生物多樣性所帶來的影響，從而啟發他們實踐綠色生活、付諸行動。這次學習經歷不僅成功激發學生對科學的好奇心，也讓他們對野生動物產生同理心，加深對保育工作迫切性的理解。整段旅程成果豐碩，為學生種下珍惜地球脆弱生態的種子，意義深遠。

Ocean Park Academy's "Bamboo Eaters" programme provided our Form 3 students with an extraordinary immersive experience that profoundly enhanced their understanding of panda conservation and the critical challenges endangered species worldwide facing. Through expertly guided interactive activities, students developed not only substantive ecological knowledge but also a deepened sense of environmental stewardship, leaving with both the inspiration and practical awareness of how individual actions can positively impact biodiversity preservation. This transformative encounter successfully ignited scientific curiosity, cultivated genuine empathy for wildlife, and reinforced urgent conservation priorities, culminating in an immensely rewarding educational journey that has instilled in our students a lasting appreciation for our planet's fragile ecosystems.

相關學習概念 Relevant Knowledge & Concept

本院中學活動緊貼課程的學科主題及相關學習概念，讓教師能適切地選擇合乎學生的學習內容。與此同時，本院不斷推動社會、甚至地球的可持續發展，多元化的活動主題亦配合了聯合國提出的一系列可持續發展目標，包括永久保護地球及其自然資源，冀望學生從中了解可持續發展的重要性，在促進經濟繁榮的同時，共同為保護地球而努力。

The secondary school programmes provided by OPAHK are closely related to the subjects and knowledge of the school curriculum so teachers can choose the content which meets the students' cognitive level. OPAHK continues to promote the sustainable development of society and the Earth. The diverse themes of the programmes match the sustainable development goals proposed by the United Nations, including protect and ensure the lasting of natural resources. Our goal is to let students understand the importance of sustainable development and work together to promote economic prosperity while protecting the planet.

活動 Programme	相關學習概念 Relevant Knowledge & Concept									可持續發展目標 Sustainable Development Goals			
	科學教育 Science Education				科技教育 Technology Education	個人、社會及人文教育 Personal, Social and Humanities Education			公民與社會發展 Citizenship and Social Development	可持續城市 和社區 Sustainable Cities and Communities	氣候對策 Climate Action	海洋生態 Life belowWater	陸地生物 Life on Land
	綜合科學 Integrated Science	生物 Biology	化學 Chemistry	物理 Physics	設計與應用科技 Design and Applied Technology	地理 Geography	旅遊與款待 Tourism and Hospitality Studies	公民、經濟與社會 Citizenship, Economics and Society					
													
園內活動 In-park Activity													
海洋奇遇大典 Ocean Treasures	✓	✓						✓	✓	✓		✓	
竹林隱士 Bamboo Eaters	✓	✓				✓		✓	✓	✓	✓		✓
海洋動物擱淺搜查組 Animal Stranding Investigator	✓	✓						✓	✓	✓		✓	
極地之旅 Polar Voyage	✓	✓				✓		✓	✓	✓	✓	✓	
生態旅遊實習生 Eco-tourism Trainee							✓	✓	✓	✓		✓	
動感物理 Physics in Motion	✓			✓	✓								
海洋公園生涯規劃活動 Life Planning Education in Ocean Park	✓	✓	✓	✓	✓		✓	✓	✓	✓		✓	✓
與大自然共融 Live Sustainability with the Nature	✓	✓				✓		✓	✓	✓	✓	✓	✓
公民科學及研究方法 Citizen Science and Research Method	✓	✓				✓		✓	✓	✓		✓	✓
互動講座 Interactive Theatre	✓	✓				✓		✓	✓	✓	✓	✓	✓

活動 Programme	相關學習概念 Relevant Knowledge & Concept									可持續發展目標 Sustainable Development Goals			
													
	科學教育 Science Education				科技教育 Technology Education	個人、社會及人文教育 Personal, Social and Humanities Education			公民與社會發展 Citizenship and Social Development	可持續城市 和社區 Sustainable Cities and Communities	氣候對策 Climate Action	海洋生態 Life belowWater	陸地生物 Life on Land
	綜合科學 Integrated Science 	生物 Biology 	化學 Chemistry 	物理 Physics 	設計與應用科技 Design and Applied Technology 	地理 Geography 	旅遊與款待 Tourism and Hospitality Studies 	公民、經濟與社會 Citizenship, Economics and Society 					
園外活動 Out-park Activity													
到校 互動講座 Outreach Interactive Seminar	✓	✓				✓		✓	✓				✓
到校自然 探索嘉年華 Outreach Carnival - Nature Exploration	✓	✓				✓		✓	✓	✓	✓	✓	✓
生態奇趣遊 Nature Explorer	✓	✓				✓		✓	✓				✓
共建生態園 Eco Garden at School	✓	✓				✓		✓	✓				✓
鳥巢工程師 Artificial Bird Nest at School	✓	✓			✓	✓		✓	✓				✓
境外生態之旅 Outbound Eco Study Tours	✓	✓				✓		✓	✓				✓
網上活動 Online Activity													
極地之旅 Polar Voyage	✓	✓				✓		✓	✓	✓	✓	✓	
海洋公園 工作實錄 - 動物護理員 的日常工作 Workplace Observations in Ocean Park - Animal Husbandry	✓	✓				✓	✓	✓	✓	✓		✓	✓
本地生物 多樣性大搜查 Local Biodiversity Exploration	✓	✓				✓		✓	✓	✓			✓

全免
Free

海洋公園保育聯盟

Ocean Park Conservation Alliance



海洋公園以保育及教育為發展基石，一直致力將人與大自然連結起來。為促進社區協作及公眾參與，海洋公園於2023年推出全新保育倡議項目 - 「逆瀕行動」。「逆瀕行動」啟發自世界自然保護聯盟(IUCN)的全球逆轉瀕危趨勢行動，確保生態系統多樣性。自2023年起，超過500間學校成為「逆瀕行動」下的「海洋公園保育聯盟學校」(下稱：「聯盟學校」)，以三大目標推廣校內保育。

Ocean Park has always been committed to conservation and education as the cornerstone of its development, and has been dedicated to connecting people with nature. To promote community collaboration and public participation, Ocean Park launched a new conservation advocacy campaign named "Mission R" in 2023. "Mission R" is inspired by International Union for Conservation of Nature (IUCN) global initiative to ensure biodiversity. From 2023, over 500 schools have become members of "Ocean Park Conservation Alliance" ("Member School") under "Mission R", advocating conservation actions on campus based on the three visions.

海馬同學會 Seahorse Rangers

「海洋公園保育聯盟」設立「海馬同學會」，每間「聯盟學校」都可邀請最多30名同學及3位負責老師成為「海馬同學會」成員並獲得以下免費物資，以帶領全校師生進行保育活動。

"Ocean Park Conservation Alliance" established "Seahorse Rangers". Each "Member School" can have up to 30 students and 3 responsible teachers as "Seahorse Rangers", to lead all students to conduct conservation activities in school.



任務小冊子
Collection Booklet



海洋公園學習通行證
Ocean Park Learning Pass



保育制服 (T恤)
Conservation Uniform (T-shirt)



教學資源 - 保育活動建議
Toolkit - Conservation
Activities Suggestions

「海洋公園保育聯盟」將於2026年1月上旬舉行誓師大會，各成員誓師成為「海馬同學會」的一員，並承諾以自身的力量向同學、家庭及公眾推廣保育資訊，以開展保育路上的旅程。

"Ocean Park Conservation Alliance" will organise Inauguration Ceremony in early January 2026. Students will pledge to become "Seahorse Rangers", committing to promote conservation messages to classmates, families and the public with their own effort, and embark on the journey of conservation.



旗艦活動 Flagship Activities

以「逆瀕行動」三大目標設立三大旗艦活動 Three flagship activities based on three visions of "Mission R":



回收在校園 SGREEN

培養師生減廢回收習慣
Develop recycling habits in students and teachers



走塑挑戰 Plastic Challenge



「低碳呀，唔該！」日 "Low Carbon PLS" Day

鼓勵校園種植及採納低碳飲食的概念，減少食物包裝、進食本地農作物以及時令食品
Encourage farming at school and adopt a low-carbon diet by consuming package free, local or seasonal foods.



低碳飲食 Eat Local



城市自然挑戰賽 City Nature Challenge

認識香港動植物及生物多樣性
Know more about flora, fauna species and local biodiversity



拯救物種及棲息地 Saving Species and Habitats

海洋公園保育嘉年華 Ocean Park Conservation Carnival

為了與公眾及其他學界持份者分享「聯盟學校」在這個學年對保育活動的想法和經驗，「海洋公園保育聯盟」將於2026年7月上旬舉辦「海洋公園保育嘉年華」。

"Ocean Park Conservation Alliance" will host the "Ocean Park Conservation Carnival" in early July 2026 to showcase and share the ideas and experiences on conservation activities gained by "Member School" throughout the academic year.



保育遊戲攤位 Conservation Game Booths

支持機構 Supporting Organisations

「海洋公園保育聯盟」有幸得到以下校長會及教育機構的支持。

"Ocean Park Conservation Alliance" is supported by the following organisations.



按英文字母順序排列 (由A至Z) The list is arranged in ascending order (A-Z)

成為「聯盟學校」的方法 Way to register as "Member School"

2024-2025「聯盟學校」會自動更新成為新一學年的「海洋公園保育聯盟學校」。

The Membership of existing "Member School" (2024-2025) will be renewed automatically.

掃描二維碼，登記成為
「海洋公園保育聯盟學校」
Scan this QR code to join and
become a member of "Ocean
Park Conservation Alliance"



園內活動 - 自然體驗班

In-park Programmes - Nature Experience



在海洋公園中，每個角落也可發現新議題。從觀察各種動物到體驗刺激好玩的機動遊戲，皆能開拓學生無窮的探究空間。本院獨特的「自然體驗班」活動，配合中學課程不同學科之需要，讓學生在園內進行體驗式學習及協作活動，掌握基本知識。

Ocean Park is full of stimulating experiences - from visiting various animals to experiencing exciting rides - all these inspire students to explore the world around them in multiple ways. Our uniquely designed Nature Experience is a perfect fit for the varied needs of different subjects under the Secondary Curriculum. Students could deepen their learning through experiential and collaborative learning.



海洋奇趣大典

Ocean Treasures



活動特色 Programme Highlights

- 遊覽「海洋奇觀」，發掘海洋生物如何利用身體特徵或「獨門秘技」適應各種環境挑戰
- 參加問答遊戲，認識海洋資源的多元用途，學會珍惜海中瑰寶
- Visit Grand Aquarium and discover the amazing behaviours and body features of different marine creatures
- Learn about marine resources through an exciting quiz and learn to cherish the treasures of the ocean

活動形式 Programme Format

- 觀察海洋生物、問答遊戲
- Marine animal observation; Quiz game



竹林隱士

Bamboo Eaters



活動特色 Programme Highlights

- 了解大熊貓的獨特之處，認識牠們所面對的自然環境及人為威脅
- 以科學角度出發，比較各種動物頭骨的異同之處；觀察大熊貓的糞便樣本，分析牠們的飲食習慣
- Understand the uniqueness of giant pandas, investigate the natural and anthropogenic threats faced by giant pandas
- Compare skull models of different animals from a scientific perspective, and analyse giant pandas' feeding habits through examining faeces samples

活動形式 Programme Format

- 觀察大熊貓、分析大熊貓飲食習慣
- Giant panda observation; Giant panda diet analysis

時間 Time	45 分鐘 Minutes
費用 Fee	學生（每位） Student (Per person) HK\$110
名額（學生） Capacity (Students)	20 - 40



極地之旅 Polar Voyage



活動特色 Programme Highlights

- 透過科學實驗，探討氣候變化對大自然的影響，並反思生活習慣去實行低碳生活
- 觀看海豹教育示範及走訪「冰極天地」，認識各種極地動物的適應本能和面對的威脅
- Examine the impacts of climate change through an experiment and adopt sustainable lifestyle to reduce our carbon footprints
- Visit Polar Adventure and observe a seal educational demonstration to discover how different polar animals adapt to their habitats, and understand the threats they are facing

活動形式 Programme Format

- 模擬極地環境實驗、海豹教育示範
- Polar environment simulating experiment; seal educational demonstration



海洋動物擱淺搜查組 Animal Stranding Investigator



活動特色 Programme Highlights

- 參觀「香港海洋生物救護及教育中心」，認識及了解各種檢驗動物的儀器
- 透過真實個案，了解海洋生物擱淺的原因
- Visit Hong Kong Marine Life Stranding and Education Centre to learn about the equipment and methods used in examining marine animals
- Uncover the mystery of marine life stranding through investigating actual cases

活動形式 Programme Format

- 參觀「香港海洋生物救護及教育中心」、擱淺個案研究
- Visit to Hong Kong Marine Life Stranding and Education Centre; Stranding case studies

時間 Time	45 分鐘 Minutes
費用 Fee	學生（每位） Student (Per person) HK\$110
名額（學生） Capacity (Students)	20 - 40



全新
NEW

生態旅遊實習生 Eco-tourism Trainee



旅遊與款待科
Tourism and
Hospitality Studies



活動特色 Programme Highlights

- 以香港海洋公園為例，了解主題樂園融合娛樂和保育的獨特之處
- 在專業導賞員指導下，體驗動物講解與款待工作，並學習向遊客傳遞保育信息
- Understand the unique art of integrating entertainment with conservation in theme parks, using Ocean Park Hong Kong as an example
- Try working as eco-guide and hospitality staff with professional guidance, acquiring the know-how of conveying conservation messages to park visitors

活動形式 Programme Format

- 專業導賞員分享工作經驗、親身體驗工作實況
- Sharing by professional Eco-guide; Firsthand experience of real-life workplace



動感物理 Physics in Motion



物理科
Physics



活動特色 Programme Highlights

- 置身「動感天地」的機動遊戲，親歷刺激旅程，探索機動遊戲背後的物理概念
- 活用物理概念，成為機動遊戲設計師，設計出既安全又刺激的機動遊戲
- Jump on the rides at Thrill Mountain and explore the underlying physics concepts with real life experiences
- Apply physics concepts and become a roller coaster designer in designing exciting and safe rides

活動形式 Programme Format

- 機動遊戲觀察及體驗、物理實驗工作坊
- Rides experience and observation; Physics practical workshop

時間 Time	135 分鐘 Minutes	90 分鐘 Minutes
費用 Fee	學生（每位）Student (Per person) HK\$330	學生（每位）Student (Per person) HK\$220
名額（學生） Capacity (Students)	15-20	20-40

園內活動 - 海洋公園生涯規劃活動

In-park Programmes - Life Planning Education in Ocean Park



為配合學校進行生涯規劃課程，本院推出不同主題的工作實錄，讓學生有機會深入到訪幕後地帶，提升對各專業的認識和興趣，了解海洋公園內多元化的工作機會。學生可於活動中與專業團隊交流，探討不同工作的特別之處，理解不同崗位所面對的難題，培養應對未來挑戰的能力，為未來升學及就業作準備。

In line with the schools' Life Planning Education, OPAHK provides students with the rare opportunity to visit our behind-the-scene areas and explore the diverse career opportunities in the Park. Through interacting with the professional teams to understand their daily duties and challenges they encountered, students can better equip themselves and prepare them for future career and study.

活動形式

Programme Format

- 與專業團隊訪談，讓學生探究不同職業背後所面對的難題
- 工作場地考察，了解公園運作及維修的工作
- Interviews with professional teams and understand the challenges they encountered
- Workplace visit to discover career interest

動物救援 Animal Rescue*

活動特色 Programme Highlights

- 參觀「香港海洋生物救護及教育中心」，近距離觀察中心內的動物解剖工具及儀器、了解解剖程序和研究動物標本
- 與「鯨豚擱淺行動組」成員對話，了解獸醫及其他行動組成員在動物救援工作上的角色
- Visit Hong Kong Marine Life Stranding and Education Centre to closely observe the instruments and equipment for necropsy, understand the necropsy procedures and study the animal specimens
- Interact with the member of Cetacean Stranding Response Team to understand the roles of Ocean Park veterinarians and other professionals in animal rescuing



*「動物救援」部份環節或以英語輔以粵語或普通話進行。

Parts of the Animal Rescue programme may be conducted in English and supplemented with Cantonese or Putonghua.

動物護理 Animal Husbandry

活動特色

Programme Highlights

- 參觀不同教育景點的幕後地帶，了解動物護理員日常工作的環境及所用設備
- 親身接觸及試用動物護理員所需的工具及裝備，體驗他們照顧動物的日常
- Visit the behind-the-scene areas of attractions to understand the working environment of and equipment used by animal caretakers
- Experience the daily operations of animal caretakers by trying out the tools and equipment for animal care

水族護理
Aquarist



海洋哺乳類
動物訓練及護理
Marine Mammal
Training and
Husbandry



陸生動物
訓練及護理
Terrestrial
Animal Training
and Husbandry



工程設計 Engineering Design

活動特色

Programme Highlights

- 深入展館及機動遊戲的幕後地帶，了解其設計及運作如何為遊客提供良好而安全的體驗
- 與機械及系統運作人員對談，認識他們每天的工作流程及點滴
- Explore the behind-the-scene areas of animal exhibits and rides to the design and operations of the systems and mechanics at the Park for providing an exceptional and safe guest experience
- Interact with technicians and system operators to learn about their daily workflow and details of their work

維生系統及維修
Life Support
System and
Maintenance



纜車設計及運作
Cable Car
Design and
Operation



機動遊戲
運作及維修
Ride Operation
and Maintenance



時間 Time	45 分鐘 Minutes
費用 Fee	學生 (每位) Student (Per person) HK\$110
名額 (學生) Capacity (Students)	15 - 20

園內活動 - 自然探索班

In-park Programmes - Nature Exploration



透過多樣化的導覽主題，本課程為學生提供自主學習與探索的機會。學生將走訪園內不同動物展館，觀察來自多種生境的動物，從中訓練自主探索、觀察與思考的能力。

Through a variety of themed guided tours, this programme offers students the opportunity for self-directed learning and exploration. Students will visit different animal exhibits in the Park, observe species from various habitats, and develop their skills in independent inquiry, observation, and critical thinking.



與大自然共融

Live Sustainability with the Nature



活動特色 Programme Highlights

- 遊覽「海洋奇觀」及「亞洲動物天地」，發掘動物如何利用身體特徵去適應各種環境
- 透過細心觀察，探索與海陸動物可持續共存的方法
- Visit Grand Aquarium and Amazing Asian Animals to discover the amazing behaviours and adaptations of animals
- Observe and explore ways to live sustainably with marine and terrestrial animals

活動形式 Programme Format

- 教育景點導賞、動物觀察
- Narration in attractions; Animal observation



公民科學及研究方法

Citizen Science and Research Method



活動特色 Programme Highlights

- 遊覽「北極之旅」及「熱帶雨林天地」，進行動物行為觀察和記錄
- 認識公民科學，了解生態調查的基本技巧
- Observe and record animal behaviour through visiting North Pole Encounter and Rainforest
- Become a citizen scientist and learn about the basic skills of ecological survey

活動形式 Programme Format

- 體驗公民科學及研究方法、動物觀察
- Experience citizen science and research method; Animal observation

時間 Time	45分鐘 Minutes
費用 Fee	學生（每位） Student (Per person) HK\$90
名額（學生） Capacity (Students)	20-40

園內活動 - 互動講座

In-park Programmes - Interactive Theatre



本院特設大型互動學習講座，可同時容納多個班別或班級，以配合學校需要。學生可在教育大使帶領下，一同探索新奇有趣的動物小知識，更有機會近距離觀察動物，與護理員交流護理心得，從豐富的學習體驗中培養保育意識。

To cater to a large group of students across classes and levels, we offer the Interactive Theatre with animal educational demonstrations and interactive games. Guided by animal caretakers and educators, students can discover fascinating facts about animals and develop awareness on the conservation issue.



全新
NEW

大熊貓保育日誌

Giant Panda Conservation Diary



活動特色 Programme Highlights

- 透過互動遊戲，以動物護理員身分，多角度了解大熊貓的護理工作
- 透過大熊貓的保育現況，了解世界各地有關大熊貓的保育工作
- Explore giant panda husbandry tasks through an interactive game
- Learn about giant panda conservation efforts around the world by exploring the current status of their conservation

活動形式 Programme Format

- 互動問答遊戲、觀看大熊貓護理片段
- Interactive games; Giant panda husbandry videos

時間 Time	45分鐘 Minutes
費用 Fee	學生（每位）Student (Per person) HK\$90
名額（學生） Capacity (Students)	100-450



熱帶雨林之旅 Rainforest Voyage



活動特色 Programme Highlights

- 透過互動遊戲，深入認識動物特徵，以及實踐環保生活的重要性
- 近距離觀察動物，了解護理員的日常護理工作
- Discover animal features and the importance of sustainable living through interactive games
- Observe animal educational demonstrations and find out the duties of animal caretakers

活動形式 Programme Format

- 動物教育示範、互動遊戲
- Animal educational demonstration; Interactive games



集合吧！極地守護隊 Together We are the Polar Guardians



活動特色 Programme Highlights

- 近距離觀察動物，深入認識極地動物的身體特徵
- 透過互動遊戲，探索氣候變化對動物的影響，並了解實踐環保生活的重要性
- Discover the unique body features of polar animals by observing an animal educational demonstration
- Explore the impact of climate change on animals and the importance of sustainable living through interactive games

活動形式 Programme Format

- 動物教育示範、互動遊戲
- Animal educational demonstration; Interactive games

時間 Time	45分鐘 Minutes	
費用 Fee	學生（每位） Student (Per person) HK\$90	
名額（學生） Capacity (Students)	100-450	100-200

園內活動 - 大型學習日配套

In-park Programmes - Ocean Park School-wide Activity Package



海洋公園一直致力締造難忘、有趣好玩、富娛樂性及具教育意義的遊樂體驗，亦是全校學習日或學校旅行的首選地點。本園由專業團隊提供一站式服務，全程跟進及協助籌備，致力配合學校需要，務求活動安排更臻完備。活動內容可參考園內中學活動。

Ocean Park is a popular destination for large-scale school activities with our professional support and fun-filled programmes. We are committed to provide memorable experiences that are fun, entertaining, and educational while promoting life-long learning and conservation advocacy through schools outing. This package applies to the in-park programmes for Secondary students.



學生人數達三百人的本地學校大型活動即可獲免費一站式服務
Free one-stop service will be provided to local schools outings of 300 or more students

內容將因應活動規模有所調整
Contents are subject to change depending on the event scale

園內活動 - 全方位學習之旅 (學生團體票)

In-park Programmes - Life-wide Learning Journey (Student Group Tickets)



「全方位學習之旅」配合香港學校課程，活動包括海洋公園入場門票、「保育最前線」網上講座，以及讓學生自主探索的遊蹤任務工作紙。

The "Life-wide Learning Journey" is in line with the Hong Kong School Curriculum. The package includes admission to the Park, "Conservation Battlefront" online seminar and an Orienteering Mission Worksheet.



時間 Time	全日自由探索 Free Exploration
費用 Fee	學生 (每位) Student (Per person) HK\$130

掃描二維碼，前往活動網頁瀏覽
申請表格及相關條款及細則

Scan the QR code to visit the event
website for the application form and
related terms and conditions



姊妹學校教育活動 Sister School Programme



全新
NEW

海陸動物保育家 Land and Sea Animal Conservationist



海洋公園「姊妹學校教育活動」為香港和內地學校提供交流平台；透過動物觀察、互動遊戲和專題研討，讓兩地學生彼此交流分享，提升自然保育意識，從而學會珍惜大自然。兩地學生在課程中互相學習，有趣豐富的學習體驗亦可拓展視野。

The "Sister School Programme" of Ocean Park provides an exchange platform between Hong Kong and Mainland schools. Through animal observation, interactive activities and project learning, the programme facilitates exchange and sharing among students from different localities, raising their awareness of ecological conservation and their love for nature. Hong Kong and Mainland students are able to learn from each other and broaden their horizons through fun-filled and enriching learning experiences.



活動特色 Programme Highlights

- 認識海洋和陸地動物面臨的威脅及其保育狀況，探討逆轉瀕危的方法
- 討論和專題研討鼓勵同學們多角度探討以及協作，促進香港與內地學生的交流
- Understand the threats faced by aquatic and terrestrial animals and their conservation status, examining ways to conserve endangered species
- Enquire and explore from different perspectives through project learning, promoting in-depth exchange and collaboration between Hong Kong and Mainland students

活動形式 Programme Format

- 保育專題研討及報告、交流分享
- Conservation project learning and presentation; Sharing sessions

時間 Time	90分鐘 Minutes
費用 Fee	香港學生（每位） Hong Kong Student (Per person) HK\$220
	內地學生（每位） Mainland Student (Per person) HK\$300
名額（學生） Capacity (Students)	20-40



到校互動講座 Outreach Interactive Seminar

講座設有兩大主題：本地生物多樣性及海洋公園工作實錄，以供學校選擇。

To cater a large group of students across classes and levels at school, OPAHK offers the Outreach Interactive Seminar with two thematic options: Local Biodiversity and Workplace Observations in Ocean Park.



活動特色 Programme Highlights

- 本地生物多樣性講座：認識香港的野生動植物及棲息地，並了解如何與野生生物共享地球資源，掌握可持續發展理念
- 海洋公園工作實錄：透過動物護理員的工作訪談影片，了解所需要的工作態度、技能和知識
- Local Biodiversity Seminar: Learn about Hong Kong wildlife and their habitats to explore a sustainable lifestyle
- Workplace Observations in Ocean Park: Understand the required soft skills and knowledge of animal caretakers through watching videos on husbandry practices

活動形式 Programme Format

- 專題學習、訪談影片、互動遊戲
- Case-based learning; Interview video; Interactive games



到校自然探索嘉年華 Outreach Carnival - Nature Exploration

「到校自然探索嘉年華」鼓勵學生透過不同的攤位遊戲，發掘大自然所帶來的驚喜，了解有趣的動植物知識及保育資訊。

Students are encouraged to explore the wonders of nature and discover interesting facts of flora and fauna through game booths.



活動特色 Programme Highlights

- 以五感探索大自然，並深入了解不同動物的野外生存技能
- 觸摸大自然裏找到的素材，學會欣賞大自然的美妙
- Explore the nature with five senses and get to know more about the survival skills of different animals; understand how their special body features help them adapt to the environment
- Appreciate the value and beauty of nature through natural materials using five sense during interactive game booths

活動形式 Programme Format

- 互動攤位遊戲、自然素材接觸
- Interactive game booths; Natural materials play

活動 Programme	到校互動講座 Outreach Interactive Seminar	到校自然探索嘉年華 Outreach Carnival - Nature Exploration
時間 Time	45 分鐘 Minutes	90 分鐘 Minutes
費用 Fee	HK\$4,000	HK\$15,000
名額 (學生) Capacity (Students)	20 - 300	100 - 300

Nature+ 活動 Nature+ Programme



本院設有不同主題的自然生態教育活動，能讓學生親身走進香港各類生態環境中，與意想不到的動植物相遇，一起探索本地生物多樣性，並從中學習欣賞和珍愛大自然資源。

OPA HK's Nature+ Programme provides students with the opportunity to immerse themselves in nature and explore Hong Kong biodiversity. Throughout this learning journey, students are inspired to appreciate and treasure our natural resources.

生態奇趣遊 Nature Explorer



活動特色 Programme Highlights

- 考察海洋公園百草生態徑或香港郊野及城市公園，發掘香港動植物的蹤跡並研究生物間的共生關係
- 學習生態普查技巧，配合現代科技例如紅外線攝錄機、內視鏡，探索香港物種
- Uncover the symbiotic relationships between species at Ocean Park Eco-Herbal Trail, local and urban parks during site inspection
- Discover the nature and acquire the skills in conducting an ecological survey with infrared camera, endoscope, etc.

活動形式 Programme Format

- 海洋公園百草生態徑、香港郊野或城市公園考察、動植物觀察
- Ocean Park Eco-Herbal Trail, local country park or urban park visit; Species observations

時間 Time	90 分鐘 Minutes
費用 Fee	學生（每位） Student (Per person) HK\$220
名額（學生） Capacity (Students)	20-40

共建生態園 Eco Garden at School*



活動特色 Programme Highlights

- 深入認識蝴蝶及香港本地動植物後，與學生於校園裏共同建造生態友善花園，了解生物成長過程
- Construct an eco garden at school with students after learning more on native species and discover their stages of life

活動形式 Programme Format

- 建造校內生態園、生態調查、到校生態工作坊、園內生態講座
- Eco garden construction at school; Ecological survey; Ecological workshop at school; In-park seminar



鳥巢工程師 Artificial Bird Nest at School*



活動特色 Programme Highlights

- 學習組裝及設計人工鳥巢，認識香港本土鳥類的生態及保育知識，了解城市化對動物的影響
- Acquire skills in assembling artificial bird nest and learn about the ecology and conservation of local bird species in Hong Kong, as well as understanding the impact of urbanisation on animals

活動形式 Programme Format

- 建造人工鳥巢、生態調查、到校生態工作坊、園內生態講座
- Artificial bird nest construction; Ecological survey; Ecological workshop at school; In-park seminar



* 上述活動不包括後續生境管理及灌溉系統或人工鳥巢安裝，並需於一個學年內完成。

The above programme does not include the maintenance of eco garden, irrigation system and bird nest installation, and needs to be conducted within a school year.

* 教師如對以上活動有興趣，可電郵至 opahk-news@oceanpark.com.hk 查詢。

If teachers are interested in above programmes, please send your enquiry via email to opahk-news@oceanpark.com.hk.

Nature+ 活動 - 境外生態之旅

Nature+ Programme - Outbound Eco Study Tours



海洋公園與世界各地的動物保育機構及專家一直緊密聯繫，我們期望透過舉辦境外遊學團，鼓勵學生放眼世界，擴闊視野，一同探索各地生態資源及人文生活。

本系列活動為境外生態深度遊學團，為期五至七天，行程包括到四川或其他自然生境考察，尋找野生動物蹤跡，學生更有機會與當地機構專家交流。另外，學生會於出發前參加「非一般的簡介會」，內容包括參觀園內展館及參與生態奇趣遊，率先感受生態探索的樂趣，同時為旅程做好充足的準備。

Ocean Park has always been in close contact with animal conservation institutions and experts around the world to organise collaborative outbound study tours. We encourage students to broaden their horizons, explore not only the ecological resources of different regions but also cultures.

The Outbound Eco Study Tours last for 5 to 7 days, the itinerary includes Sichuan visit and wildlife trace finding. Whilst, students will have the opportunity to discuss with experts from respective local institutions. A pre-tour "Extraordinary Briefing Session" will be held to give a taste of ecological exploration: exhibition in Ocean Park, and Nature Explorer.

四川生態之旅

Sichuan Nature Programme

活動特色 Programme Highlights

- 成為公民科學家，參與野生大熊貓普查工作
- 體驗大熊貓護理員的工作，照顧大熊貓的起居飲食
- 考察當地保護區，深入認識大熊貓的伴生動物
- Become a citizen scientist and participate in the wild giant panda survey
- Experience the duties of a giant panda caretaker to acquire the skills of taking care of giant pandas
- Explore animal species that accompany giant panda in local reserved areas



臥龍中華大熊貓苑神樹坪基地
Shenshuping Base of China Conservation and Research Centre for giant pandas in Wolong

生態調查 - 安裝紅外線相機
Ecological Survey -
Infrared Camera Installing Experience



尋找野生動物 - 觀鳥活動
Searching for Wildlife - Bird-watching



* 行程及內容可按學生學習需要調節。
Itinerary and content could be adjusted to suit students' learning needs.

* 本院提供其他境外生態之旅目的地。教師如對以上活動有興趣，可電郵至 opahk-news@oceanpark.com.hk 查詢。
OPAHK offers other outbound eco study tour destinations. If teachers are interested in above programmes, please send your enquiry via email to opahk-news@oceanpark.com.hk.



極地之旅 Polar Voyage



活動特色 Programme Highlights

- 探究氣候變化對環境的影響，並制定低碳生活方案
- 觀察教育示範影片中的海豹特徵和行為，發掘極地動物的適應力及威脅
- Explore the impacts of climate change and propose low-carbon living solutions
- Find out the adaptation and threats faced by polar animals through watching animal demonstration video



海洋公園工作實錄 - 動物護理員的日常工作 Workplace Observations in Ocean Park - Animal Husbandry



活動特色 Programme Highlights

- 觀看動物護理員工作訪談影片，了解所需的工作態度、技能和知識
- 展示不同的工作場地，觀察專業團隊的工作情況
- Understand the required soft skills and knowledge of animal caretakers through watching videos on husbandry practices
- Discover different workplaces by observing professional teams working throughout the Park



本地生物多樣性 大搜查 Local Biodiversity Exploration



活動特色 Programme Highlights

- 學習以科學方法進行生態普查，尋找及記錄野生動植物的蹤跡
- 認識香港野生動植物及其棲息地，反思如何與野生生物共享地球資源，並理解可持續發展理念
- Acquire the scientific skills to conduct an ecological survey of wildlife species
- Learn about Hong Kong wildlife and their habitats to explore a sustainable lifestyle

時間 Time	45 分鐘 Minutes
費用 Fee	HK\$3,000
名額 (學生) Capacity (Students)	20-150



香港海洋公園保育基金 - 教育活動

Ocean Park Conservation Foundation, Hong Kong - Education Programmes



同心保育大嶼山泥灘生物多樣性*

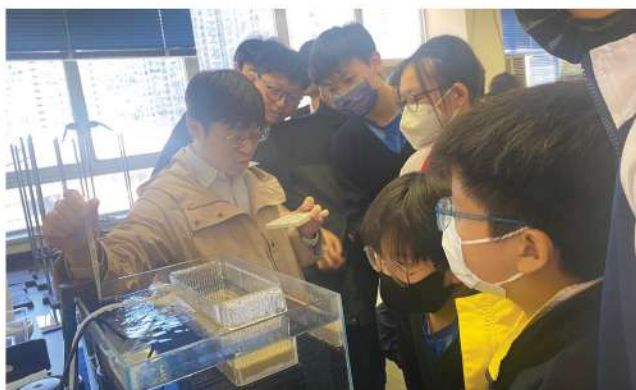
Safeguarding the Lantau Intertidal Mudflat Biodiversity*

馬蹄蟹校園保母計劃

Horseshoe Crab School Rearing Programme

自2009年起，香港海洋公園保育基金與香港城市大學合辦全港首個馬蹄蟹校園保母計劃，讓中學生透過參與各種與馬蹄蟹有關的活動，包括協助策劃各種保育宣傳活動及親身飼養人工繁殖的幼年中國蟹（*Tachypleus tridentatus*）。

Ocean Park Conservation Foundation has been working with the City University of Hong Kong (City U) to launch the "Juvenile Horseshoe Crab Rearing Programme" since 2009. The programme is dedicated to widespread conservation messages for horseshoe crabs, as well as ecological important site and habitats such as mudflats through rearing juvenile horseshoe crabs.



活動特色 Programme Highlights

- 在校飼養馬蹄蟹以了解這種活化石的人工繁殖方法及瀕危原因，由此提高對保育野生動物的意識
- 策劃保育宣傳活動以提高學生及學校社區的公眾對馬蹄蟹與其棲息地保育的認識和關注，達至保護包括在大嶼山內的許多生態重要地點和生境，例如潮間帶泥灘
- Understand the difficulties of artificial breeding and maintaining a sustainable population of horseshoe crabs, as well as other wild lives, through rearing juvenile horseshoe crabs in school
- Inspire students to beware of natural environment and conserve it from threats, by learning about horseshoe crabs and their mudflat habitats in Lantau as well as promoting conservation messages to the school and community

活動形式 Programme Format

- 教育講座、在校飼養幼年中國蟹、策劃保育宣傳活動、實地考察
- Seminar, rearing juvenile horseshoe crab in school, organising conservation education activities and field trips

*本活動由大嶼山保育基金資助。This programme is funded by Lantau Conservation Fund.

活動時期 Programme Period	10月至翌年7月 November to next July
名額 (學生) Capacity (Students)	每校 Each school - 20
名額 (學校) Capacity (Schools)	20
費用 Fee	全免 Free

如欲了解詳情或報名，請致電至(+852) 3923 2704或電郵至opcf@oceanpark.com.hk。
For more details or application, please contact us via (+852) 3923 2704 or email to opcf@oceanpark.com.hk.

活動詳情 Programme Details



現凡參加中學活動的學生，即可以優惠價HK\$20換購「遊蹤任務」工作紙；而繳付額外留園費用的學生則可免費獲贈一份。

Students participating in secondary programmes can get a copy of the Orienteering Mission Worksheet for HK\$20! Students who pay the stay-behind surcharge can get it for FREE.

自然體驗班 | Nature Experience

活動 Programme	生態旅遊實習生 Eco-tourism Trainee	海洋奇趣大典 Ocean Treasures	竹林隱士 Bamboo Eaters	*海洋動物 擱淺搜查組 *Animal Stranding Investigator	*極地之旅 *Polar Voyage	動感物理 Physics in Motion
名額 (學生) Capacity (Students)	15 - 20	20 - 40				
時間 Time	09:30 - 10:15	✓	✓	✓		
	10:15 - 11:00	✓	✓	✓		✓
	11:00 - 11:45	✓	✓	✓	✓	
	11:45 - 12:30	✓	✓	✓		✓
	12:30 - 13:15	✓	✓	✓		
	13:15 - 14:00	✓	✓	✓		✓
	14:00 - 14:45	✓	✓	✓		
	14:45 - 15:30	✓	✓	✓		
地點 Location	海濱樂園 The Waterfront				高峰樂園 The Summit	
費用 Fee^	學生 (每位) Student (Per person) HK\$330	學生 (每位) Student (Per person) HK\$110				學生 (每位) Student (Per person) HK\$220
		老師 (每位) Teacher (Per person) HK\$110				
額外留園費用 Stay-behind Surcharge		學生 (每位) Student (Per person) HK\$40				
		老師 (每位) Teacher (Per person) HK\$125				

* 逢星期二不設「極地之旅」活動。

Polar Voyage is NOT applicable on Tuesday.

* 「海洋動物擱淺搜查組」只限星期一及星期五舉行。

Animal Stranding Investigator is ONLY applicable on Monday and Friday.

^ 活動費用包括教育活動及一小時自由參觀。Programme fee includes education programme and 1-hour self-visit at the Park.

海洋公園生涯規劃活動 | Life Planning Education in Ocean Park

活動 Programme		*動物救援 *Animal Rescue	水族護理 Aquarist	*纜車設計 及運作 *Cable Car Design and Operation	*海洋哺乳類 動物訓練及護理 *Marine Mammal Training and Husbandry	陸生動物 訓練及護理 Terrestrial Animal Training and Husbandry	*維生系統 及維修 *Life Support System and Maintenance	機動遊戲 運作及維修 Ride Operation and Maintenance
名額（學生）Capacity (Students)		15 - 20						
時間 Time	09:30 - 10:15	✓						
	10:15 - 11:00	✓	✓					✓
	11:00 - 11:45	✓		✓		✓	✓	✓
	11:45 - 12:30	✓			✓			✓
	12:30 - 13:15		✓					✓
	13:15 - 14:00							
	14:00 - 14:45	✓						
地點 Location		海濱樂園 The Waterfront				高峰樂園 The Summit		
費用 Fee^		學生（每位）Student (Per person) HK\$110						
		老師（每位）Teacher (Per person) HK\$110						
額外留園費用 Stay-behind Surcharge		學生（每位）Student (Per person) HK\$40						
		老師（每位）Teacher (Per person) HK\$125						

* 「動物救援」活動只限星期三及星期四舉行。

Animal Rescue is ONLY applicable on Wednesday and Thursday.

^ 活動費用包括教育活動及一小時自由參觀。

Programme fee includes education programme and 1-hour self-visit at the Park.

* 「纜車設計及運作」、「海洋哺乳類動物訓練及護理」及「維生系統及維修」活動只限星期一至星期五舉行。

Cable Car Design and Operation, Marine Mammal Training and Husbandry and Life Support System and Maintenance are ONLY applicable on Monday to Friday.

凡購滿十張學生票，可獲得隨團老師門票乙張，其持有人可隨學生參與活動。其餘老師須另外繳付費用進園，而費用不包括參與活動。學生不可使用老師入園門票，反之亦然。所有參加者須於完成活動後離開海洋公園。如欲繼續使用本園設施，必須事先申請，並繳付額外留園費用。活動費用有效期至2026年8月31日。

Ocean Park issues 1 accompanying teacher ticket for every 10 student tickets purchased per group, so they can accompany students to the programme. An extra fee applies for any additional teacher to enter the Park, and the fee does not include the participation of the programme. Students cannot use the teacher admission tickets, and vice versa. All participants are expected to leave Ocean Park after the education programme. Participants who would like to remain at the Park and enjoy its facilities after the programme must apply in advance and pay a stay-behind surcharge. The programme fees are valid until 31 August 2026.

自然探索班 | Nature Exploration

活動 Programme		與大自然共融 Live Sustainability with the Nature	公民科學及研究方法 Citizen Science and Research Method
名額 (學生) Capacity (Students)		20 - 40	
時間 Time	09:30 - 10:15	✓	
	10:15 - 11:00	✓	✓
	11:00 - 11:45	✓	✓
	11:45 - 12:30	✓	✓
	12:30 - 13:15	✓	✓
	13:15 - 14:00	✓	✓
	14:00 - 14:45	✓	✓
	14:45 - 15:30	✓	✓
地點 Location		海濱樂園 The Waterfront	高峰樂園 The Summit
費用 Fee^		學生 (每位) Student (Per person) HK\$90	
		老師 (每位) Teacher (Per person) HK\$110	
額外留園費用 Stay-behind Surcharge		學生 (每位) Student (Per person) HK\$40	
		老師 (每位) Teacher (Per person) HK\$125	

^活動費用包括教育活動及一小時自由參觀。

Programme fee includes education programme and 1-hour self-visit at the Park.

互動講座 | Interactive Theatre

活動 Programme	大熊貓保育日誌 Giant Panda Conservation Diary	熱帶雨林之旅 Rainforest Voyage	集合吧！極地守護隊 Together We are the Polar Guardians
名額 (學生) Capacity (Students)	100 - 450		100 - 200
時間 Time	10:15 - 11:00		11:00 - 11:45
地點 Location	海濱樂園 The Waterfront		高峰樂園 The Summit
費用 Fee^	學生 (每位) Student (Per person) HK\$90		
	老師 (每位) Teacher (Per person) HK\$110		
額外留園費用 Stay-behind Surcharge	學生 (每位) Student (Per person) HK\$40		
	老師 (每位) Teacher (Per person) HK\$125		

^活動費用包括教育活動及一小時自由參觀。

Programme fee includes education programme and 1-hour self-visit at the Park.

全方位學習之旅 (學生團體票) | Life-wide Learning Journey (Student Group Tickets)

門票種類 Type	中學學生票 Secondary School Student Ticket	額外成人票 Additional Adult Ticket (購買一張學生票可購買額外成人票最多兩張) (2 additional adult tickets can be purchased per 1 student ticket)
費用 (每張) Fee (Per Ticket)	HK\$130	HK\$235

凡購滿十張學生票，可獲得隨團老師門票乙張，其持有人可隨學生參與活動。其餘老師須另外繳付費用進園。學生不可使用老師入園門票，反之亦然。活動費用有效期至2026年8月31日。

Ocean Park issues 1 accompanying teacher ticket for every 10 student tickets purchased per group, so they can accompany students to the programme. An extra fee applies for any additional teacher to enter the Park, and the fee does not include the participation of the programme. Students cannot use the teacher admission tickets, and vice versa. The programme fees are valid until 31 August 2026.

活動詳情

Programme Details

姊妹學校教育活動 | Sister School Programme

活動 Programme	*海陸動物保育家 *Land and Sea Animal Conservationist	
名額 (學生) Capacity (Students)	20-40	
時間 Time	10:30-12:00	
	12:00-13:30	
	14:30-16:00	
	16:00-17:30	
地點 Location	海濱樂園 The Waterfront	
費用 Fee	香港學校 Hong Kong School	內地學校 Mainland School
	^學生 (每位) Student (Per person) HK\$220	^學生 (每位) Student (Per person) HK\$300
	*老師 (每位) Teacher (Per person) HK\$110	*老師 (每位) Teacher (Per person) HK\$250
額外留園費用 Stay-behind Surcharge	*老師 (每位) Teacher (Per person) HK\$125	

*香港及內地學校必須同時申請參加姊妹學校教育活動。
Hong Kong and Mainland school must apply the Sister School Programmes as a group.

^學生費用包括教育活動及自由參觀。
Students' programme fee includes education programme and self-visit at the Park.

*凡購滿十張學生票，可獲得隨團老師門票乙張，其持有人可隨學生參與活動。其餘老師須另外繳付費用進園，而費用不包括參與活動。
Ocean Park issues 1 accompanying teacher ticket for every 10 student tickets purchased per group, so they can accompany students to the programme. An extra fee applies for any additional teacher to enter the Park, and the fee does not include the participation of the programme.

(香港學校適用) 隨團及額外老師門票不包括自由參觀。完成活動後，老師如欲繼續使用本園設施，必須事先申請，並繳付額外留園費用。
(Applicable to Hong Kong school) Accompanying and additional teacher tickets do not include self-visit at the Park. Teachers who would like to stay behind after the programme must apply in advance and pay a stay-behind surcharge.

(內地學校適用) 隨團及額外老師門票包括自由參觀。
(Applicable to Mainland school) Accompanying and additional teacher tickets include self-visit at the Park.

到校活動 | School Activity

活動 Programme	到校互動講座 Outreach Interactive Seminar	到校自然探索嘉年華 Outreach Carnival - Nature Exploration
名額 (學生) Capacity (Students)	20 - 300	100 - 300
時間 Time	每節 45 分鐘 Each session lasts for 45 minutes	每節 90 分鐘 Each session lasts for 90 minutes
費用 Fee	每節 Each session HK\$4,000	每節 Each session HK\$15,000

網上活動 | Online Activity

活動 Programme	極地之旅 Polar Voyage	海洋公園工作實錄 - 動物護理員的 日常工作 Workplace Observations in Ocean Park - Animal Husbandry	本地生物 多樣性大搜查 Local Biodiversity Exploration
名額 (學生) Capacity (Students)	20 - 150		
時間 Time	每節 45 分鐘 Each session lasts for 45 minutes		
費用 Fee	每節 Each session HK\$3,000		

活動費用有效期至2026年8月31日。
The programme fees are valid until 31 August 2026.

Nature+ 活動 | Nature+ Programme

活動 Programme	生態奇趣遊 Nature Explorer	
名額 (學生) Capacity (Students)	20 - 40	
時間 Time	09:30 - 21:00 每節 90 分鐘 Each session lasts for 90 minutes	
地點 Location	海濱樂園 The Waterfront / 各區郊野公園或市區公園 Country parks or urban parks	
費用 Fee	學生 (每位) Student (Per person) HK\$220 老師 (每位) Teacher (Per person) HK\$110	
額外留園費用^ Stay-behind Surcharge	學生 (每位) Student (Per person) HK\$40 老師 (每位) Teacher (Per person) HK\$125	

活動 Programme	共建生態園 Eco Garden at School	鳥巢工程師 Artificial Bird Nest at School
名額 (學生) Capacity (Students)	20 - 40	20
時間 Time	共兩節，每節90分鐘 Each session lasts for 90 minutes, 2 sessions in total	共四節，每節90分鐘 Each session lasts for 90 minutes, 4 sessions in total
地點 Location	海洋公園及學校 Ocean Park and School	
費用 Fee	教師如對以上活動有興趣，可電郵至 opahk-news@oceanpark.com.hk 查詢 If teachers are interested in above programmes, please send your enquiry via email to opahk-news@oceanpark.com.hk	
報名申請方法 How to Apply		

^ 於海洋公園海濱樂園舉行的活動，所有參加者須於完成活動後離開海洋公園。如欲繼續使用本園設施，必須事先申請，並繳付額外的留園費用。

For programmes conducted in the Waterfront of Ocean Park, all participants are expected to leave the Park after the education programme. Participants who would like to remain at the Park enjoy its facilities after the programme must apply in advance and pay a stay-behind surcharge.

凡購滿十張學生票，可獲得隨團老師門票乙張，其持有人可隨學生參與活動。其餘老師須另外繳付費用參與活動。學生不可使用老師入園門票，反之亦然。活動費用有效期至2026年8月31日。

Ocean Park issues 1 accompanying teacher ticket for every 10 student tickets purchased per group, so they can accompany students to the programme. An extra fee applies for any additional teacher to join the programme. Students cannot use the teacher admission tickets, and vice versa. The programme fees are valid until 31 August 2026.

Nature+ 活動 - 境外生態之旅 | Nature+ Programme - Outbound Eco Study Tours

活動 Programme	四川生態之旅 Sichuan Nature Programme
名額 (學生) Capacity (Students)	20 - 40
適合出團季節 Recommended Seasons	十至四月 October to April
費用 Fee	視乎季節及當時機票酒店價格而定。 The fee depends on the seasonal price of flight tickets and hotels
活動申請方法 How to Apply	本院提供其他境外生態之旅目的地。教師如對以上活動有興趣， 可電郵至 opahk-news@oceanpark.com.hk 查詢 OPAHK offers other outbound eco study tour destinations. If teachers are interested in above programmes, please send your enquiry via email to opahk-news@oceanpark.com.hk

活動申請方法（本地學校教育活動）

香港海洋公園學院之本地學校教育活動於2025年9月1日至2026年8月31日期間舉辦。教育活動逢星期一至星期六舉辦，公眾假期及本園指定不適用日子除外。活動名額有限，先到先得。每月十五日為下個月份教育活動報名的截止日期。

1. 請於本院網頁下載申請表，然後以電郵遞交至opahk-news@oceanpark.com.hk。
2. 各活動的學生名額均設上下限，詳情請參閱各單張。若報名學生人數少於最低名額要求，貴校須付最低名額款項。
3. 每位學生須參加最少一項活動。
4. 本院提供之課程為教育活動，並非親子活動。
5. 本院將於收到申請表後十個工作天內聯絡申請人，通知申請結果並發出「付款通知書」。若貴校在期限後仍未收到通知，請致電本院職員（+852）3923 2323（請於接通後選擇語言，續按[1]，再按[4]字）。
6. 請根據本院所發出之「付款通知書」上的指示完成付款程序。本院接受信用卡、現金轉賬及支票繳交費用。
7. 校方於收到「付款通知書」後，須於付款期限前繳交費用。
8. 本院會於確認收到校方付款後，以電郵發出「申請確定信」給校方，收據則於活動當日交予學校代表。
9. 入場票需於參觀當日憑確定信及隨團老師的身份證明文件或教職員證明文件到本園票務部領取。

條款及細則

1. 本活動只適用於香港特別行政區教育局學校級別中的「幼稚園」、「小學」或「中學」（各級別中的特殊學校亦包括在內）；並不適用於獲教育局歸類為「其他」的學校。
2. 本院活動之參加者必須為申請表上列明之學校的註冊學生。
3. 所有活動均以粵語、英語或普通話進行，校方須於申請活動時於申請表上列明。
4. 若校方未能於限期前繳交費用或完成活動申請手續，本院保留取消活動申請的權利。
5. 入場門票只可於指定日期使用，一經確定不得更改。所有已繳交之費用恕不退還。
6. 參加者須準時到達集合地點，逾時不候，遲到者不獲補時安排。
7. 額外老師門票費用不包括參與活動，持票人需於公園開放後方可入園，並需按公眾順序使用公園設施。
8. 入場人士可攜帶嬰兒食物，或只於用作個人食用的合理份量之外來食物或飲品進入公園。如有任何查詢，請致電（+852）3923 2323（請於接通後選擇語言，續按 [1]，再按 [0] 字）與海洋公園遊客服務部職員聯絡。
9. 請勿攜帶任何超過 56cm x 36cm x 23cm 之行李或大型物品進入本公園內之景點或劇場。閣下可自費將行李寄存於行李寄存服務處（設於海濱樂園夢幻水都內的嬰兒車及輪椅租用處旁）。
10. 除非經本園事先批准，否則所有於本園拍攝之照片或影像均不得作商業用途。遊客進入公園後，即代表本園有權採用遊客的相片或圖像作教育或宣傳用途。
11. 除非經本園事先批准，否則申請本院活動之學校均不得利用「香港海洋公園」及「香港海洋公園學院」之名義作公開宣傳用途。
12. 學生參加指定活動或須自行乘坐海洋列車前往活動集合地點或景點。
13. 如活動舉行當日遇到以下情況而令活動取消，本院將為受影響之學校重新安排活動時間，活動將於原定參觀日期起計之一個月內舉行：
 - 活動開始前2小時天文台發出紅色或黑色暴雨警告信號，或
 - 活動開始前2小時天文台發出一號戒備信號或以上之熱帶氣旋警告信號，或
 - 教育局宣佈停課。
14. 活動內容及日期可能因應動物及天氣狀況而作出更改或取消。動物教育示範及機動遊戲體驗可能因惡劣天氣狀況而取消。活動內容如有任何更改，恕不另行通知。
15. 如天文台發出黃色暴雨警告信號，「海洋公園生涯規劃活動（海洋哺乳類動物訓練及護理）」及「互動講座」的動物教育示範將會作出更改或取消。
16. 海洋公園部份設施或會因工程進行而關閉，不作另行通知，敬請留意。
17. 任何人士須遵守海洋公園入口處及 / 或其他位置所示之海洋公園附例、安全規則及公園守則。海洋公園對公園內任何人士之任何財物的任何種類之損失或損害概不承擔任何責任。
18. 海洋公園保留所有更改活動申請的條款及批核申請之最終決定權。

Application Method (Local School Education Programme)

Ocean Park Academy Hong Kong (OPAHK) programmes are available from Mondays to Saturdays, from 1 September 2025 to 31 August 2026, except public holidays and blockout dates. All applications are considered on a first-come, first served basis. The monthly deadline is the 15th of the previous month.

1. Application forms may be downloaded from our website and submitted via email to opahk-news@oceanpark.com.hk.
2. Each programme requires a minimum number of student participants and has a maximum capacity. For details, please refer to our booklets. If the number of registered students is fewer than the minimum requirement, your school will be requested to pay for the minimum.
3. Please select at least one programme for each student.
4. The activities offered by Ocean Park Academy Hong Kong (OPAHK) are part of our educational programme. They are not parent-child activities.
5. Applicants will be notified of the application result and issued a Payment Notice within ten working days upon our receipt of the duly completed application form. If you fail to receive any notification within this timeframe, please contact our staff at (+852) 3923 2323 (select language and press [1], and then [4]).
6. Please follow the instructions on the Payment Notice to complete the payment. Applicants can settle payment by credit card, bank transfer or cheque.
7. The payment must be settled by the payment due date upon receipt of the Payment Notice.
8. A Confirmation Letter will be sent to the school by email after the payment is duly received and confirmed by OPAHK. The receipt will be issued on the visiting day for collection.
9. Tickets are available for collection upon presentation of the Confirmation Letter and valid identification documents of accompanying teacher at the Park's Ticketing Office on the date of visits.

Terms & Conditions

1. The programmes are only available for schools classified under the school level of Education Bureau of the HKSAR Government as "kindergartens", "primary schools" or "secondary schools" (including special schools among these school levels), and not available for schools classified as "others".
2. Participants of the programmes must be the registered students at the school indicated on the application form.
3. All programmes are conducted in Cantonese, English or Putonghua and the requests should be indicated in advance on the application form.
4. If the payment cannot be settled by the payment due date or if the application is not duly completed, OPAHK reserves the right to cancel the application.
5. Tickets can only be used on the date of validation. No refund or rescheduling will be made after confirmation.
6. Participants must be punctual in arriving at the designated gathering locations. Latecomers will not be entertained, and the programme cannot be extended beyond the scheduled time.
7. Additional teacher tickets' holder does not include the participation of the programme. Ticket holders may enter the Park only after it opens and must use the Park facilities in accordance with public order.
8. Participants may bring in baby food and a reasonable quantity of food and beverages for personal consumption. For further information, please contact our staff at (+852) 3923 2323 (Select the language and press [1], and then [0]).
9. Baggage and bulky item over the size of 56cm x 36cm x 23cm are not allowed in any attractions or theatre inside the Park. You may store them at our Baggage Rental Counter (next to the Stroller and Wheelchair Rental Counter at Aqua City, Waterfront).
10. All photos and videos taken at Ocean Park are not allowed for commercial use without prior approval from Ocean Park Corporation. Admission to the Park signifies your permission and agreement for Ocean Park to take and use your photographs and videos for educational and promotional purposes.
11. Applicants are not allowed to advertise in the name of "Ocean Park Corporation" or "Ocean Park Academy Hong Kong" without prior approval from Ocean Park Corporation.
12. Students participating in specific programmes might need to take the Ocean Express to the gathering locations or attractions on their own.
13. In the occurrence of the following events, OPAHK will reschedule the visits for schools affected to a new date within a month of the affected day:
 - The Hong Kong Observatory issues Red or Black Rainstorm Warning Signal 2 hours before the visit, or;
 - The Hong Kong Observatory issues Tropical Cyclone Warning Signal Number 1 or higher 2 hours before the visit, or;
 - The Education Bureau announces class suspension of all schools.
14. Programme contents and dates are subject to change or cancellation depending on animal and weather conditions. Animal educational demonstrations and rides experience may be cancelled due to adverse weather conditions. Programme contents may be subject to change without prior notice.
15. When the Hong Kong Observatory issues an Amber Rainstorm Warning Signals, animal educational demonstrations in Interactive Theatre are subject to change or cancellation.
16. Ocean Park may suspend the operation and/or close any facilities for renovation work without prior notice.
17. All guests must comply with Ocean Park Bylaw, safety rules, and the Park's Rules and Regulations which are accessible at the entrance and other locations throughout Ocean Park. Ocean Park shall be under no liability or responsibility for any loss of any kind or any damage to any property of any person in the Park.
18. Ocean Park reserves the right to make the final decision on application procedure and approval.



超過 More than
1,600,000 名

學生由九十年代初至今參與過海洋公園的教育活動

Students have taken part in Ocean Park's education programmes since the early 1990s



超過 More than
140,000 名

學生於同一學年內參與海洋公園教育活動(過往一年內最高參與人數)

Students of all ages participated in education activities at the Park within the same academic year (Highest record within one academic year)



高達 More than
95%

受訪遊人對公園教育活動感到十分滿意(過往三年內最高數據)

Respondents were highly satisfied with the Park's education programmes (Highest record in 3 consecutive years)

電話 Tel.: **(+852) 3923 2323**

請於接通後選擇語言，續按[1]，再按[4]字聯絡海洋公園探索及教育部。
Once you have called the Hotline and selected the language, please press [1], and then [4] to contact the Discovery & Education Department.

電郵 Email: opahk-news@oceanpark.com.hk

網址 Website: <http://www.oceanpark.com.hk/education>



此刊物由大豆油墨印製

This prospectus is printed with soy ink