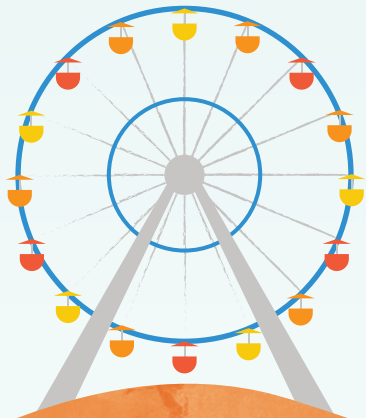




STUDENT
DISCOVERY
PROGRAMME



OCEAN PARK is Hong Kong's premier edutainment theme park, offering memorable experiences that combine the thrill of discovery and adventure with a passion for learning, conservation, and life. As an accredited member of the Association of Zoos and Aquariums, we have a team of experienced educators specializing in interpretations, nature play, and experiential learning. Our educational programmes cater to students of all levels, instilling a love of nature and advancing to the importance of conservation, environmental protection, and scientific thinking. In 2018, we received the Smart Parents' Choice - Brand Award for STEAM Enhancement Initiatives. Our Student Programme is divided into three tiers, with tailor-made options to optimize student learning through visits to exhibits and hands-on experiences.

OUR VISION

- Allow participants to connect with nature through activities and enjoy a lifelong learning experience

OUR MISSION

- Lead the animal conservation and care industry forward
- Promote biodiversity and environmental sustainability
- Raise participants' awareness of nature conservation and change their habits through interesting and meaningful experiences



PROGRAMME OVERVIEW

Our student programme offers a unique blend of education, entertainment, and cultural exchange. Through visits to various attractions in Ocean Park, students can learn about rainforests, polar regions, and human interactions, while also exploring the relationship between the environment and animal survival through engaging conservation talks. By providing a diverse range of experiences in various themed programmes, we aim to inspire a deeper understanding and appreciation of the natural world, while also fostering a sense of global citizenship and environmental responsibility among students. Our teaching objectives encompasses:

- Allow participants to connect with nature through activities and enjoy a lifelong learning experience
- Encourage students to actively engage in the learning process through experiential learning
- Learning through an integrated STEAM (Science, Technology, Engineering, Arts, and Mathematics) learning approach
- Integrate the United Nations Sustainable Development Goals with a global perspective into our programmes
- Stay up-to-date with international conservation trends to ensure that our courses remain relevant and impactful
- Focus on research and evidence-based practices, providing students with the most current and accurate information about environmental conservation and sustainability

Our Discovery Programme is designed to cater to groups of various sizes and ages, with three themes available for groups of up to 100 students. Each theme is tailored to the needs of **junior level (6-11 years old)** and **senior level (12-17 years old)** students, providing a comprehensive learning experience. We also offer add-ons and tailor-made programmes upon request, ensuring that each group's specific needs are met. For larger groups over 100 students, we arrange Animal and Environmental Conservation Talks to provide an engaging and informative experience:

1-day Programme

- **Ocean & Land Discovery**
- **Rainforest & Polar Discovery**
- **Rides Discovery**
- **Animal & Environmental Conservation Talks – Whiskers Tour**
- **Animal & Environmental Conservation Talks – Journey to the Polar**

2-day Programme

- **Discovery Walks: Exchange with Local Schools**

*The above programmes are applicable for junior and senior level students



STUDENT PROGRAMMES



OCEAN & LAND DISCOVERY



JUNIOR (Aged 3-11)

- Learn the characteristics of different animals and their habitats

This programme provides a unique opportunity for students to discover the biodiversity of the ocean and land through visits to the Grand Aquarium and Amazing Asian Animals exhibits. By observing and uncovering the beauty of biodiversity, students can deepen their understanding of the relationship between animals and the environment. Through engaging and interactive experiences, we aim to inspire a sense of wonder and appreciation for the natural world, while also promoting environmental education and conservation efforts.

Duration (mins)	Content
5	Attractions Introduction
25	Exhibit Walk (Grand Aquarium /Amazing Asian Animals) & Interactive Game
25	Exhibit Walk (Grand Aquarium /Amazing Asian Animals) & Interactive Game
5	Conclusion – Course Summary and Presentation

Programme Details	
Programme Fee <small>(Admission ticket is included)</small>	Junior Student (aged 3-11 years) HK\$220 – Weekdays HK\$300 – Weekends
Capacity	15-30 students per group (maximum 100 students)
Duration	1 hour
Venue	Grand Aquarium and Amazing Asian Animals Exhibits at The Waterfront

SENIOR (Aged 12-17)

- Reflect on & explore a sustainable lifestyle
- Understand the importance of biodiversity by learning the relationship between human and animals

This programme offers students the opportunity to visit the Grand Aquarium and Amazing Asian Animals exhibits to discover the amazing behaviors and adaptations of animals. Through investigation of the impact of human behaviors on animals and exploration of ways to live sustainably with marine and terrestrial animals, we aim to promote environmental education and conservation efforts. By fostering a deeper understanding and appreciation of the natural world, we hope to inspire students to become advocates for conservation and sustainability.

Duration (mins)	Content
5	Attractions Introduction
25	Exhibit Walk (Grand Aquarium /Amazing Asian Animals) & Interactive Game
25	Exhibit Walk (Grand Aquarium /Amazing Asian Animals) & Interactive Game
5	Conclusion – Course Summary and Presentation

Programme Details	
Programme Fee <small>(Admission ticket is included)</small>	Senior Student (aged 12-17 years) HK\$300 – Weekdays HK\$360 – Weekends
Capacity	15-30 students per group (maximum 100 students)
Duration	1 hour
Venue	Grand Aquarium and Amazing Asian Animals Exhibits at The Waterfront



OCEAN & LAND DISCOVERY



STUDENT PROGRAMMES



RAINFOREST & POLAR DISCOVERY



JUNIOR (Aged 3-11)

- Understand the relationship between environment and living things
- Explore the impact of climate change to the planet

This programme provides students with the unique opportunity to visit the Rainforest and North Pole Encounter exhibits, where they can explore the living tactics of animals in these distinct habitats. Through interactive games, students can learn about the relationship between the rainforest, polar region, and humans, while also gaining an appreciation for the importance of biodiversity. By exploring the special talents of animals and recognizing the irreplaceable roles of both humans and different creatures in the world, we aim to inspire a deeper connection with the natural world and promote environmental education and conservation efforts.

Duration (mins)	Content
5	Attractions Introduction
25	Exhibit Walk (Rainforest / North Pole Encounter) & Self-exploration
25	Exhibit Walk (Rainforest / North Pole Encounter) & Self-exploration
5	Conclusion – Course Summary and Presentation

Programme Details	
Programme Fee <small>(Admission ticket is included)</small>	Junior Student (aged 3-11 years) HK\$220 – Weekdays HK\$300 – Weekends
Capacity	15-30 students per group (maximum 100 students)
Duration	1 hour
Venue	Rainforest and North Pole Encounter Exhibits at The Summit

SENIOR (Aged 12-17)

- Discovery the interdependence between human and nature
- Get to know the scientific skills and methods to conduct ecological survey

This programme offers students the opportunity to learn about the principle and importance of Citizen Science through interactive games. By investigating the impact of human activities on the environment and getting to know different research methods, students can deepen their understanding of environmental conservation and sustainability. Through engaging and informative experiences, we aim to inspire a sense of curiosity and responsibility among students, encouraging them to become advocates for environmental protection and change.

Duration (mins)	Content
5	Attractions Introduction
20	Exhibit Walk (Rainforest / North Pole Encounter) & Self-exploration
10	Conduct A Citizen Science Survey and Observation
20	Exhibit Walk (Rainforest / North Pole Encounter) & Interactive Game
5	Conclusion – Course Summary and Presentation

Programme Details	
Programme Fee <small>(Admission ticket is included)</small>	Senior Student (aged 12-17 years) HK\$300 – Weekdays HK\$360 – Weekends
Capacity	15-30 students per group (maximum 100 students)
Duration	1 hour
Venue	Rainforest and North Pole Encounter Exhibits at The Summit



RAINFOREST & POLAR DISCOVERY



STUDENT PROGRAMMES



RIDES DISCOVERY



JUNIOR (Aged 3-11)

- Learn about the operation of the system and mechanics through observation and experience

This programme provides an experiential learning opportunity on amusement park rides, specifically the Ferris Wheel and Flying Swing. Participants will compare and contrast the movement of these two rides, and gain an understanding of the physics principles involved in their operation, particularly the concept of spinning force. Additionally, the program will extend the discovery of spinning force into daily life, exploring its applications in various fields.

Duration (mins)

5
10
20
20
5

Content

Attractions Introduction
Observation and Interactive Game
Experiential Learning
Interactive Game Challenge
Conclusion – Course Summary and Presentation

Programme Details

Programme Fee (Admission ticket is included)

Junior Student (aged 3-11 years)
HK\$220 – Weekdays
HK\$300 – Weekends

Capacity

15-30 students per group (maximum 100 students)

Duration

1 hour

Venue

Thrill Mountain at The Summit

SENIOR (Aged 12-17)

- Understand the physic concept through observation and experience

This programme provides students with the opportunity to learn about the design of rides at Thrill Mountain and conduct experiential learning on these rides. By exploring and appreciating safety measures and the enjoyment of designing their own roller coaster, students can gain a deeper appreciation for the science and technology behind the rides. Through engaging and interactive experiences, we aim to inspire a sense of curiosity and innovation among students, while also promoting a deeper understanding of the engineering principles that underlie these thrilling attractions.

Duration (mins)	Content
5	Rides Introduction
20	Interactive Game
30	Rides Observation and Experiential Learning
5	Conclusion – Course Summary and Presentation

Programme Details

Programme Fee <small>(Admission ticket is included)</small>	Senior Student (aged 12-17 years) HK\$300 – Weekdays HK\$360 – Weekends
Capacity	15-30 students per group (maximum 100 students)
Duration	1 hour
Venue	Thrill Mountain at The Summit



CONSERVATION TALKS



ANIMAL & ENVIRONMENTAL CONSERVATION TALKS WHISKERS TOUR



JUNIOR (Aged 6-11)

- To discover the interconnectedness of ecosystems and the importance of preserving the environment.
- To arouse environmental awareness and inspire action to protect and preserve our shared resources and treasures.

This program focuses on exploring the relationship between the environment and animal survival. Participants will have the opportunity to observe animal demonstrations and learn about the duties of animal caretakers. Through interactive games, they will discover the unique features of rainforest animals and the importance of sustainable living. Additionally, they will learn about the resources that nature provides for daily life and how to reduce waste at its source.

Programme Details

Programme Fee
(Admission ticket is included)

Junior Student (aged 6-11 years)
HK\$220 – Weekdays
HK\$300 – Weekends

Capacity

100-300 students

Content

Educational Animal Demonstration & Interactive Games

Duration

45 mins

Venue

Whiskers Theatre at The Waterfront

SENIOR (Aged 12-17)

- To explore the resources and treasures we share with nature and understand the importance of biodiversity.
- To gain insight into the daily operation of animal husbandry and better understand its impact on the environment

This program focuses on exploring the relationship between the environment and animal survival. Participants will have the opportunity to observe animal demonstrations and learn about the duties of animal caretakers. Through interactive games, they will discover the unique features of rainforest animals and the importance of sustainable living. Additionally, they will learn about the resources that nature provides for daily life and how to reduce waste at its source.

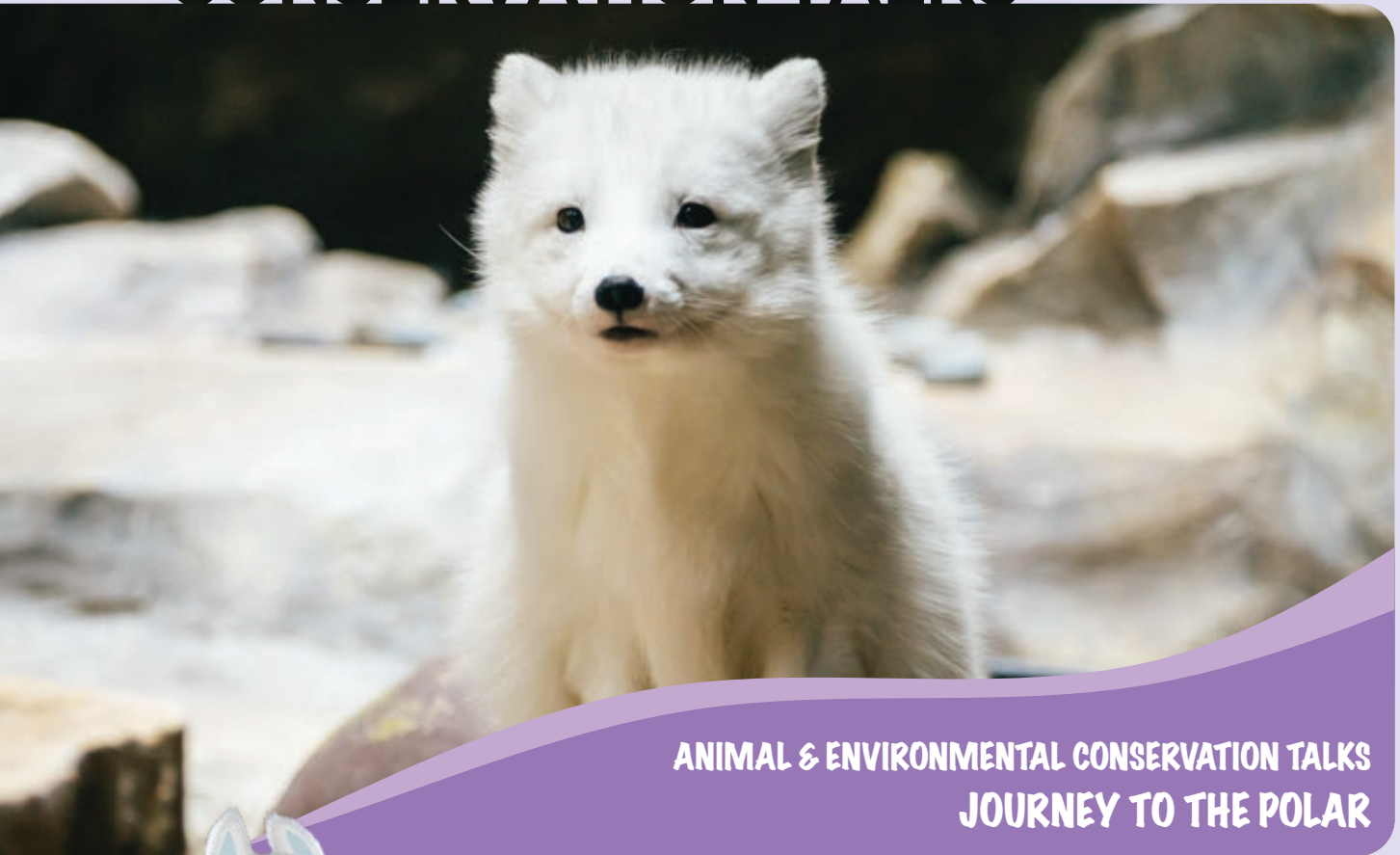
Programme Details

Programme Fee <small>(Admission ticket is included)</small>	Senior Student (aged 12-17 years) HK\$300 – Weekdays HK\$360 – Weekends
Capacity	100-300 students
Content	Educational Animal Demonstration & Interactive Games
Duration	45 mins
Venue	Whiskers Theatre at The Waterfront



ANIMAL & ENVIRONMENTAL CONSERVATION TALKS
WHISKERS TOUR

CONSERVATION TALKS



ANIMAL & ENVIRONMENTAL CONSERVATION TALKS JOURNEY TO THE POLAR



JUNIOR (Aged 6-11)

- To understand the impact of climate change on animals and promote sustainable living through actionable steps.

This programme offers students the opportunity to discover the unique features of polar animals through observing animal demonstrations. By exploring the relationship between the environment and animal survival, as well as discovering the resources of daily life that come from nature, we aim to deepen students' understanding of the importance of environmental conservation and sustainability. Through promoting awareness of our resources and encouraging waste reduction at the source, we hope to inspire a sense of responsibility and stewardship among students, encouraging them to become advocates for environmental protection and change.

Programme Details

Programme Fee <small>(Admission ticket is included)</small>	Junior Student (aged 6-11 years) HK\$220 – Weekdays HK\$300 – Weekends
Capacity	100-200 students
Content	Educational Animal Demonstration & Interactive Games
Duration	45 mins
Venue	North Pole Theatre, 1/F, North Pole Encounter at The Summit

SENIOR (Aged 12-17)

- To understand the impact of climate change on animals and the importance of sustainable living through actionable steps.
- To gain insight into the daily operation of animal husbandry and better understand its impact on the environment

This programme offers students the opportunity to discover the unique features of polar animals through observing animal demonstrations. By exploring the relationship between the environment and animal survival, as well as discovering the resources of daily life that come from nature, we aim to deepen students' understanding of the importance of environmental conservation and sustainability. Through promoting awareness of our resources and encouraging waste reduction at the source, we hope to inspire a sense of responsibility and stewardship among students, encouraging them to become advocates for environmental protection and change.

Programme Details

Programme Fee <small>(Admission ticket is included)</small>	Senior Student (aged 12-17 years) HK\$300 – Weekdays HK\$360 – Weekends
Capacity	100-200 students
Content	Educational Animal Demonstration & Interactive Games
Duration	45 mins
Venue	North Pole Theatre, 1/F, North Pole Encounter at The Summit



ANIMAL & ENVIRONMENTAL CONSERVATION TALKS
JOURNEY TO THE POLAR



DISCOVERY WALKS



DISCOVERY WALKS : EXCHANGE WITH LOCAL SCHOOLS

Looking for an immersive journey to partner with the Student Discovery Tour and explore our city's unique culture and learning environment? Extend your itinerary with our two-day tour at Ocean Park resort for a firsthand experience of our innovative learning culture. Come experience all our city has to offer!

DOUBLE DELIGHT: THE TWO-DAY ITINERARY

On the second day of our journey, we will begin by visiting a local school campus. Here, you will have the opportunity to witness firsthand the state-of-the-art facilities and meet with some of the students and faculty members. Our guided tour of the campus will provide you with valuable insights into the school's innovative approach to teaching and learnings.

Following the campus visit, we will embark on a walking tour of the city's historic landmarks. This will be an excellent opportunity for you to immerse yourself in the city's unique culture and interact with the locals, gaining a deeper understanding of the city's vibe. Our knowledgeable guides will be on hand to answer any questions you may have and provide you with interesting facts about the landmarks we visit.

Programme Fee

Day 1 ONLY

(Please refer to the programme fee)

Day 1 + Day 2

Programme fee + additional HK\$100 per student

* Depend on the local schools campus availability



DISCOVERY WALKS
EXCHANGE WITH LOCAL SCHOOLS





讓 您 我 融 入 大 自 然
Connect people with nature

香 港 海 洋 公 園 OCEAN PARK HONG KONG

香港仔黃竹坑道一百八十號
180 Wong Chuk Hang Road
Aberdeen, Hong Kong
www.oceanpark.com.hk

